

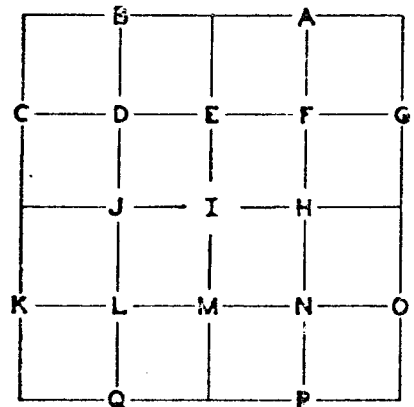
PUBLIC LAND CORNERS

WEYERHAEUSER COMPANY
SPRINGFIELD BRANCH

TOWNSHIP 26S RANGE 3W

SECTION 2 CORNER N 1/16 "C"

COUNTY Douglas OREGON



GLO SURVEY RECORD

DATE: _____

CORNER _____

PRESENT CONDITION - (DESCRIBE FULLY - USE PAGE 2 IF NEEDED FOR EXPLANATION.)

ACCESSORIES:

BEARING-	LINKS-	FEET-

Weyerhaeuser Company SURVEY RECORD

DATE: Aug. 1943

Lester Calder - Oregon Lic. Engr. #2149

Staff Compass survey set post -

referenced by:

50" Fir N30°W 31.6' plate only

SEE PAGE 2

PRESENT CONDITION: _____

Removed - superseded

Removed - superseded

SEE PAGE 2

CORNER SET: 1" Aluminum pipe set at proportioned

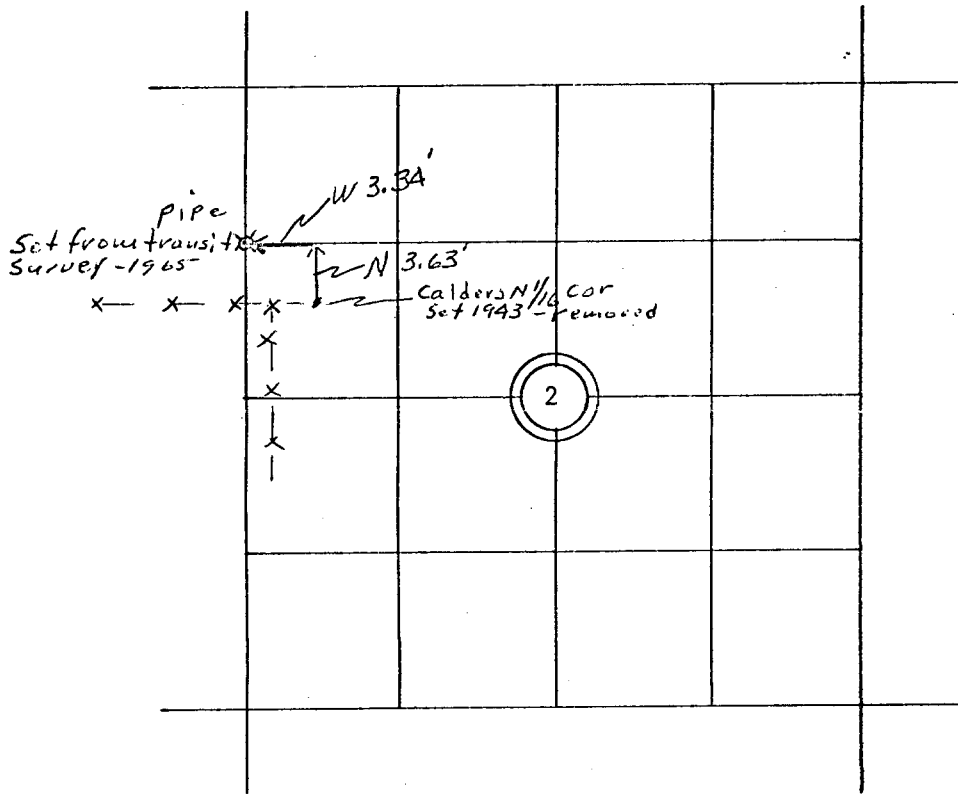
MAG. DECL.: 20°

distance from transit survey.

BEARING AND DISTANCE TO ABOVE IDENTIFIED SURVEY ACCESSORIES:

BEARING-	FEET-	SURVEY-

COUNTY SURVEYOR
DOUGLAS COUNTY, ORE.



— // — // — // — LINE MARKED BY NOTCH CUT IN BLAZE.

○ KNOWN CORNER.

⊗ REFERENCED CORNER BY WEYERHAEUSER METHOD.

A transit survey was made for Weyerhaeuser Company by R. Barta under the supervision of John E. Wilson, Washington Lic. Engr. Reg No. 2526, 1/19/-21/65. This survey states: "This point set by Calder in 1943 staff compass survey bears South 3.63' and East 3.34' from the true calculated N 1/16 corner in this survey". On 3/11/65 Calder's post and reference plate were removed and a 1" aluminum pipe was driven for the corner at the true calculated corner position according to this transit survey.

FILED
RECEIVED

SEP 7 1965

COUNTY SURVEYOR
DOUGLAS COUNTY, ORE.

ACCESSORIES ADDED THIS DATE:

MAGNETIC DECLINATION 20°

	BEARING	FEET	ORIG. B.T.	"W" NAIL	PLATE	BRASS DISC
12" Fir	S37° E	15.5	-	x	x	-
18" Fir	N75° W	40.6	-	x	x	-

IDENTIFIED ON PHOTO:

INFORMATION ON LOCATION OF CORNER AS NOW SET:

GROUND COVER:

(USING FORM LINES SKETCH TOPOG AT CORNER ON PAGE 2 PLAT)

SLOPE FACES (GIVE BEARING IN DEGREES) ON MINUS (-) %

NORTH: Timber West - current logging to East

SOUTH: Along fence - pasture to West, old logging to East.

EAST: Current logging to North, old logging to South.

WEST: Timber to North, pasture to South.

FROM CORNER |

WORK DONE FOR W. CO.

FIELD NOTES IN BOOK:

BY: *Alan Mc Chesney* DATE: 3/11/65

ENGINEER & SURVEYOR
Land Agent

UNDER THE SUPERVISION OF:

ASSISTED BY:

FILED
RECEIVED

SEP 7 1966
COPIES SENT TO:

COUNTY SURVEYOR
DOUGLAS COUNTY, ORE.

SEAL

PAGE 3
C. S. File No. 51/326-5C