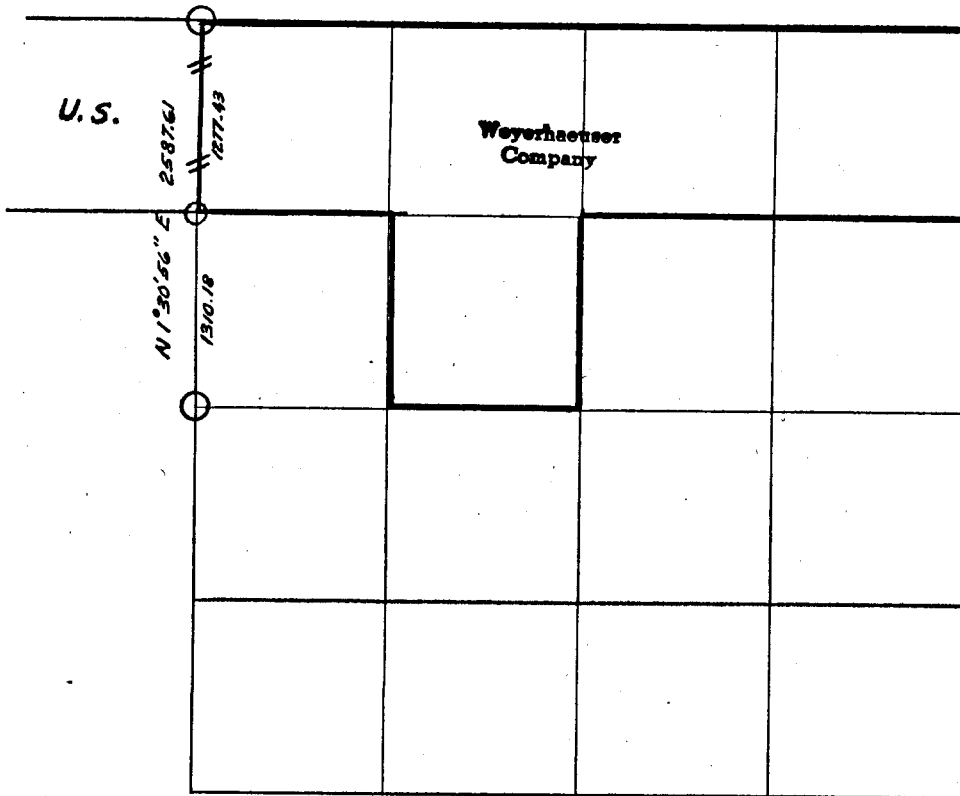


# Weyerhaeuser Company

Section 2 Township 26 S Range 3 W



— # — # — Line marked by notch cut in blaze and orange ribbon

○ Known corner

⊠ Referenced corner

Transit and abney slope chain survey Bearings based on 20° declination

This survey was made for Weyerhaeuser Company by Robert Barta, under the supervision of John E. Wilson, Washington Licensed Engineer, Reg. No. 2526

Helpers: Donald Jordon, Hal Brushe

FILED  
RECEIVED

MAR 12 1965

COUNTY SURVEYOR  
DOUGLAS COUNTY, ORE.

Dates of survey January 19 & 21, 1965 Date filed for record & where January 22

Distribution 1965 Douglas County Surveyor's office

Weyerhaeuser Company - Survey File - Spr.

Bureau of Land Management - Roseburg

Douglas County Surveyor

Reported January 22 19 65

By John E. Wilson

34 | 35  
3 | 2

Corner common to Sections 34 and 35-25S-3W and  
2 and 3-26S-3W

GLO Survey Record 1943

Set Brass Cap			Found
10" I. Ced.	N 20½° E	45 lks	Found
22" Wh. Fir	S 67° E	41 lks	Found
36" Fir	S 45° W	10 lks	Found
12" I. Ced.	N 62½° W	19 lks	Found

3 | 2

½ Corner common to Sections 2 and 3-26S-3W

County Survey Corner Found Brass Cap set by county

Fir	N 45° W	50 lks	Found
36" Fir	S 60° E	42.8'	Found

N 1/16

Corner common to Sections 2 and 3-26S-3W

Post set by Lester E. Calder in 1943

Referenced by Lester E. Calder (Plate only).  
Declination 20°

50" Fir	N 30° W	31.6'	Found
---------	---------	-------	-------

*Removed & SUPERSEDED  
SEE FILED SEPT. 1966  
in this same file  
L.L.*

This point set by Calder in 1943 by staff compass survey bears  
South 3.63' and East 3.34' from the true calculated N 1/16  
corner in this survey

WEYERHAEUSER COMPANY CORNER REFERENCE METHOD

A "W" nail driven thru the hole in a brass disc, into a notch cut low on a tree, stamped with the Oregon registered land surveyor or professional engineer registration number. An embossed aluminum plate nailed head high on same tree with 8d aluminum nails, with distance and bearing from the "W" nail to the corner stamped on it.

