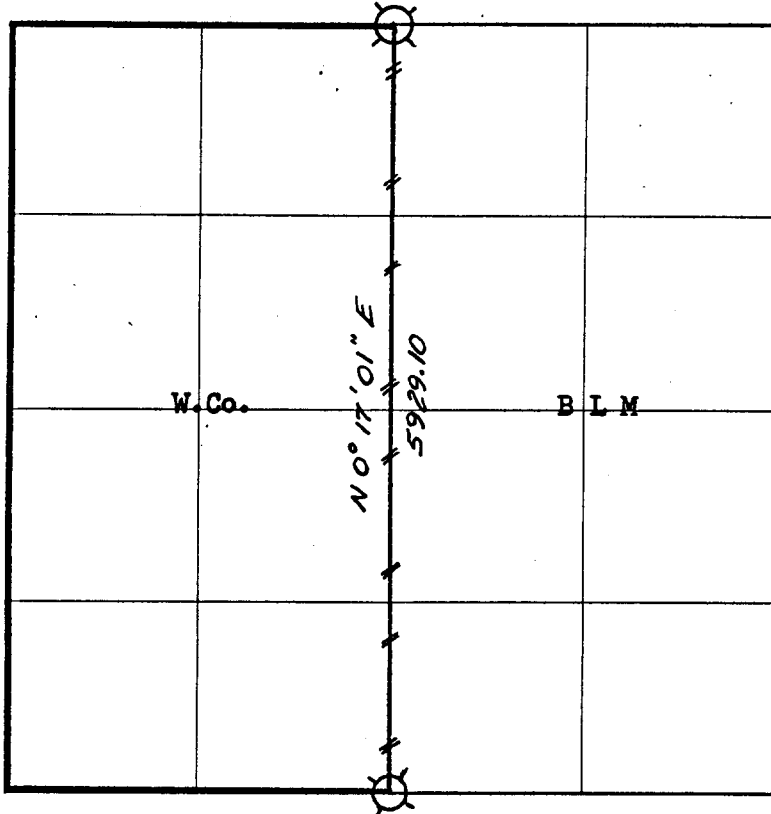


# Weyerhaeuser Company

Section 15 Township 24 S Range 2 W



—//—//— Line marked by notch cut in blaze & orange ribbon

○ Known corner

⊠ Referenced corner

Transit and abney slope chain survey Bearings based on Solar observation

This survey was made for Weyerhaeuser Company by Robert Barta, under the supervision of John E. Wilson, Washington Licensed Engineer, Reg. No. 2526

Helpers: Glen McChesney

Hal Brushe

Paul Kangas

FILED

RECEIVED

DEC 18 1964

COUNTY SURVEYOR  
DOUGLAS COUNTY, ORE.

Dates of survey October 1964 Date filed for record & where October 28, 1964

Distribution

✓ Douglas County Surveyor's Office

WCo.-Spfld - Survey File

BLM - Roseburg

*John E. Wilson - Leg. Eng.*

Reported October 28 1964

By Robert Barta