

COUNTY SURVEYORS FILE DATA
DO NOT REMOVE FROM OFFICE

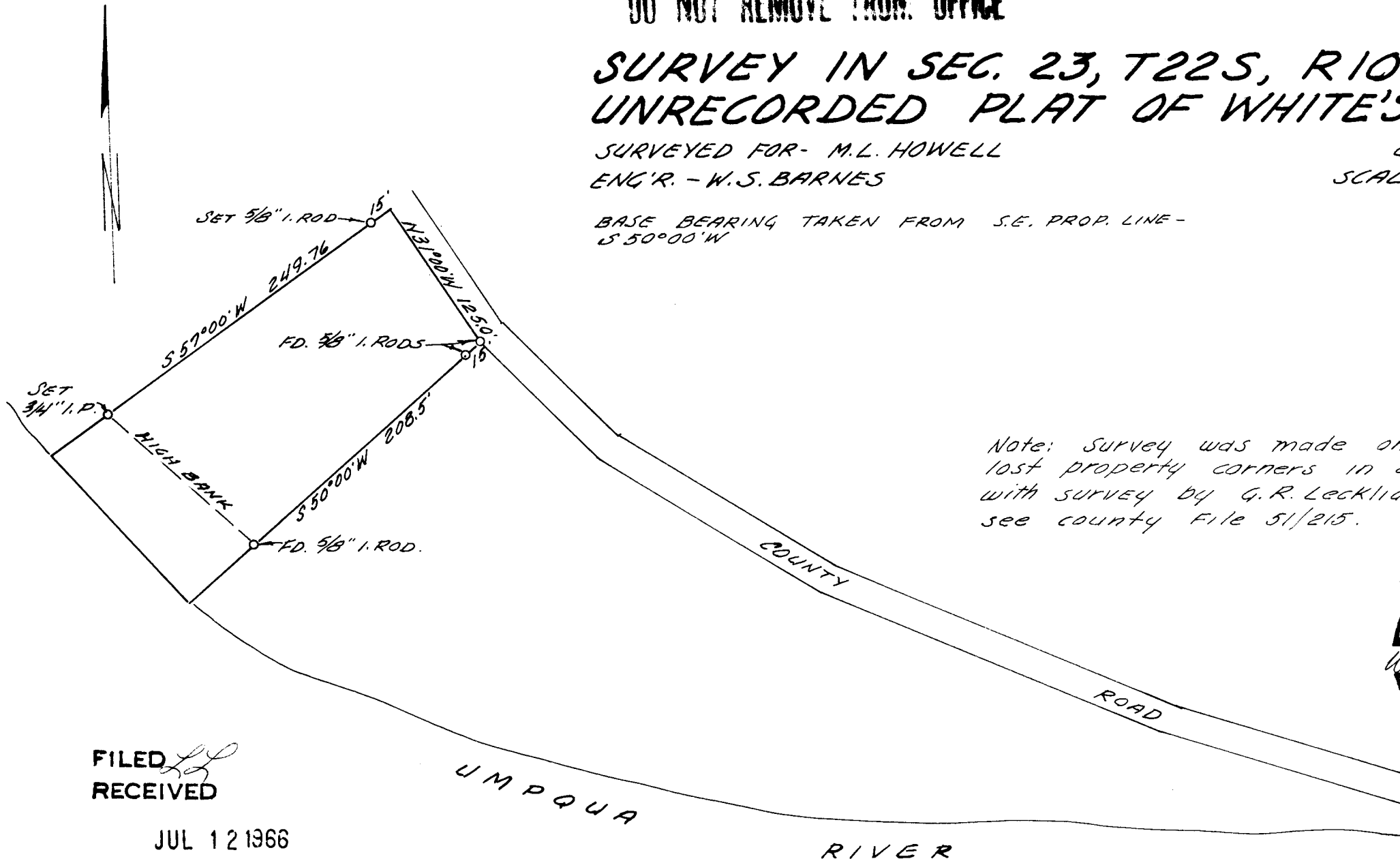
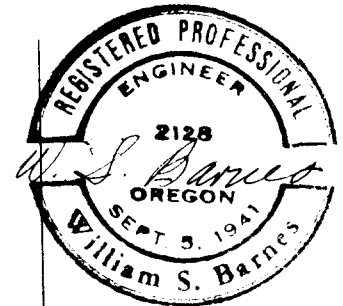
SURVEY IN SEC. 23, T22S, R10W. W.M. UNRECORDED PLAT OF WHITE'S AC.S

SURVEYED FOR - M.L. HOWELL
ENG'R. - W.S. BARNES

JULY 1966
SCALE 1" = 100'

BASE BEARING TAKEN FROM S.E. PROP. LINE -
S 50° 00' W

Note: Survey was made only to replace
lost property corners in accordance
with survey by G.R. Lecklider Oct. 1961,
see county File 51/215.



FILED
RECEIVED

JUL 12 1966

COUNTY SURVEYOR
DOUGLAS COUNTY, ORE.

C. S. File No. 51/304 -3