

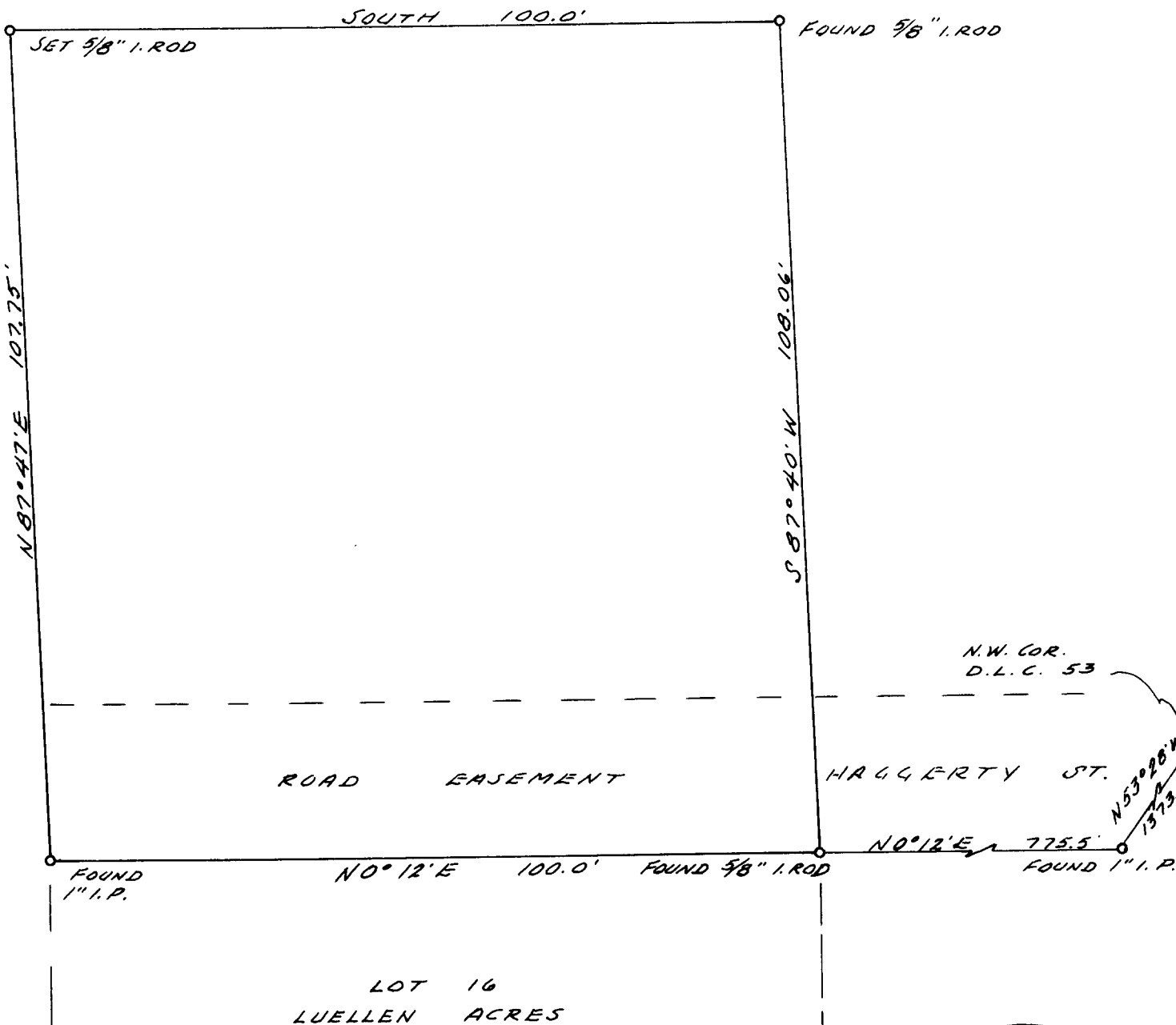
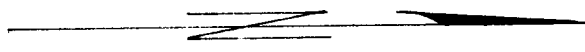
COUNTY SURVEYORS FILE DATA  
DO NOT REMOVE FROM OFFICE

T.27-S.6 R.6 W.

SURVEY TO ESTABLISH PROPERTY CORNERS  
METES AND BOUNDS IN T.27 S., R.6 W.  
ROSEBURG, OREGON.

SURVEYED FOR - S. FITZGERALD  
ENGINEER - W. S. BARNES

DEC. 1964  
SCALE 1" = 20'



FILED  
RECEIVED

BASE OF BEARINGS FROM ORIGINAL  
PLAT "LUELLEN ACRES" - N 0° 12' E.

DEC - 8 1964

COUNTY SURVEYOR  
DOUGLAS COUNTY, ORE.

