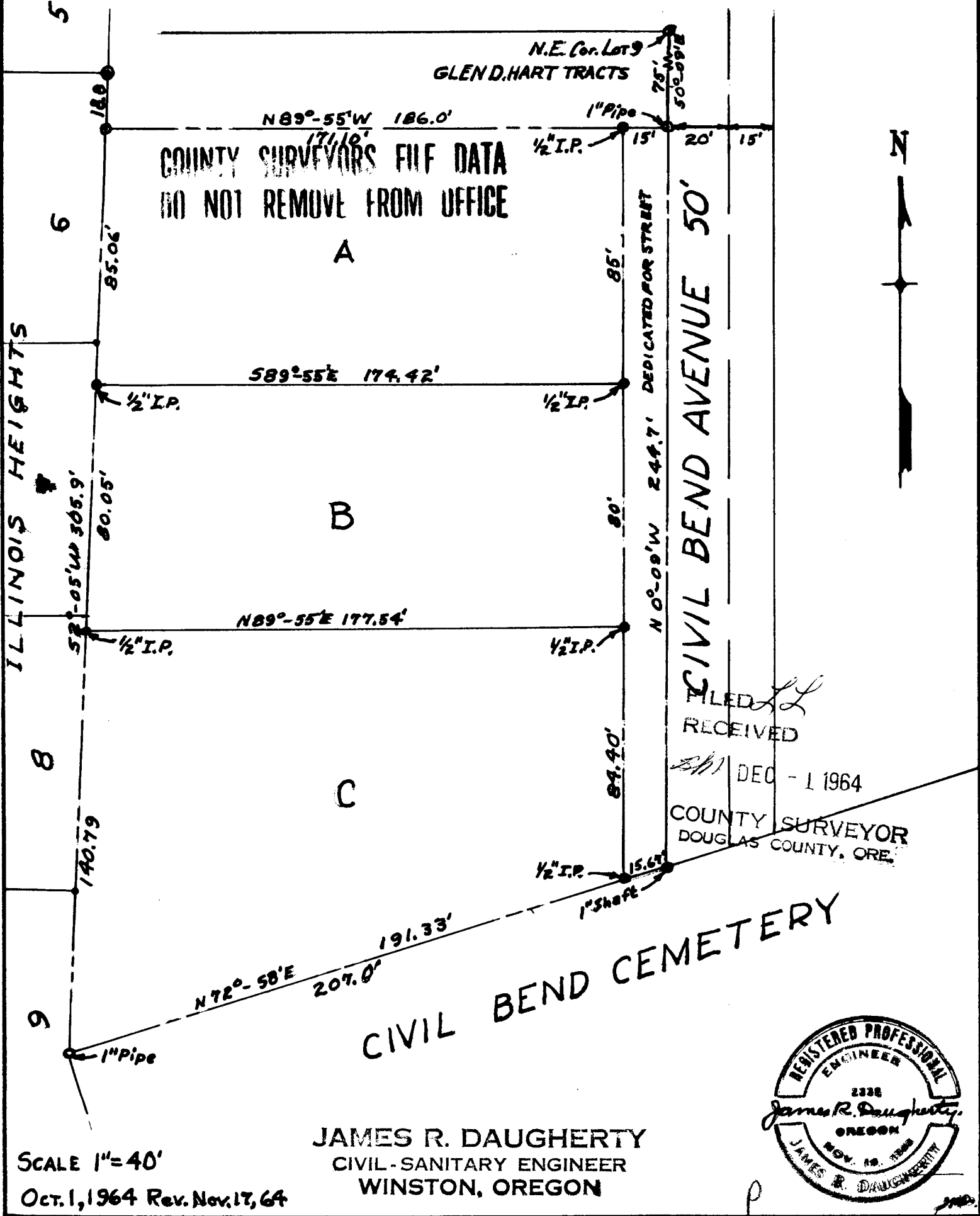


I.J. PETERMAN PARCELS IN LOT 9 - GLENDHART TRACT

CITY OF WINSTON - OREGON



COUNTY SURVEYORS FILE DATA
DO NOT REMOVE FROM OFFICE

A

B

C

ILLINOIS HEIGHTS

CIVIL BEND AVENUE 50'

CIVIL BEND CEMETERY

FILED *LL*
RECEIVED
SH DEC - 1 1964
COUNTY SURVEYOR
DOUGLAS COUNTY, ORE.

SCALE 1" = 40'
OCT. 1, 1964 Rev. Nov. 17, 64

JAMES R. DAUGHERTY
CIVIL-SANITARY ENGINEER
WINSTON, OREGON

