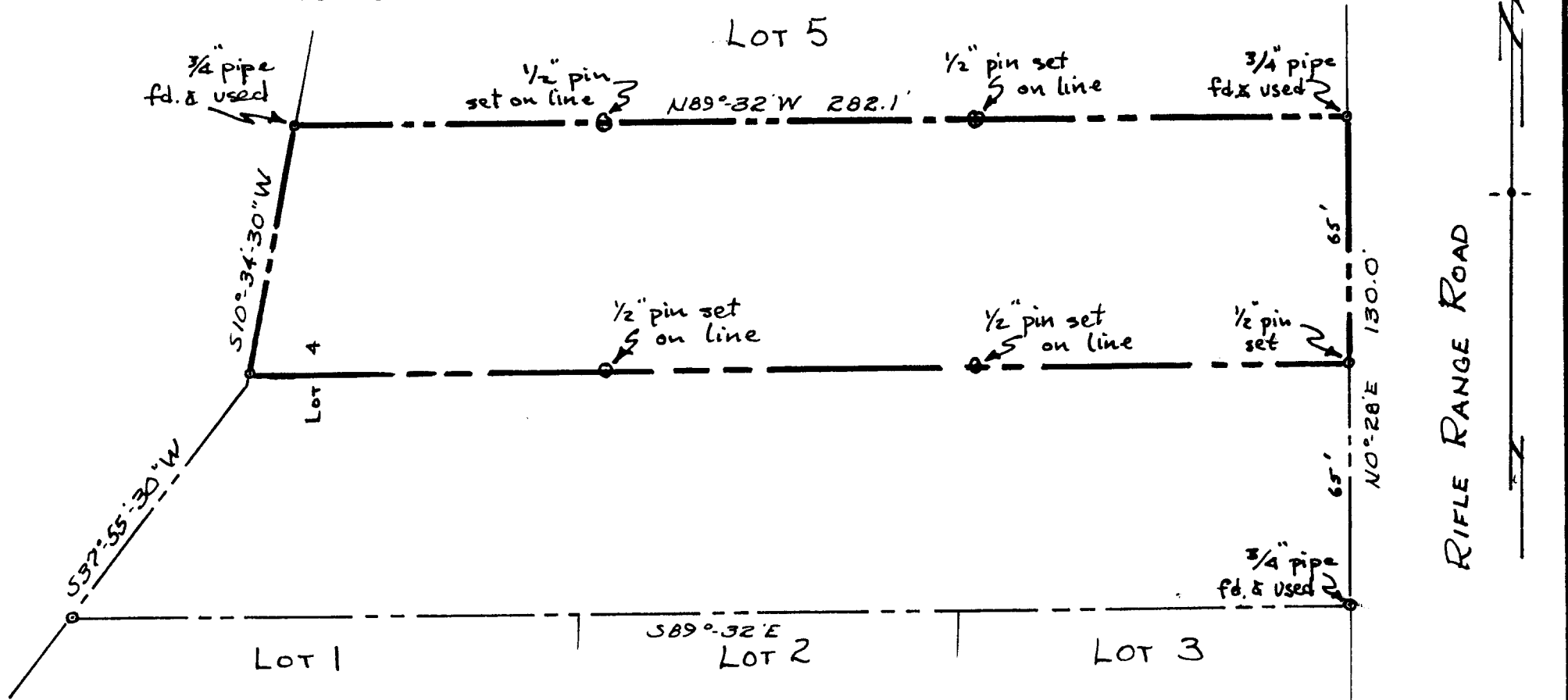


NORTH 1/2 LOT 4 · BLOCK 2 · THREE PINES

SECT. 17, T27S, R5W.W.M
DOUGLAS COUNTY OREGON
Lackey Realestate

COUNTY SURVEYORS FILE DATA
DO NOT REMOVE FROM OFFICE



FILED *LL*
RECEIVED

SCALE : 1" = 40' SEP 4 1964

JULY 2, 1964

JAMES R. DAUGHERTY
COUNTY SURVEYOR
DOUGLAS COUNTY, ORE.
CIVIL-SANITARY ENGINEER
WINSTON, OREGON



RIFLE RANGE ROAD