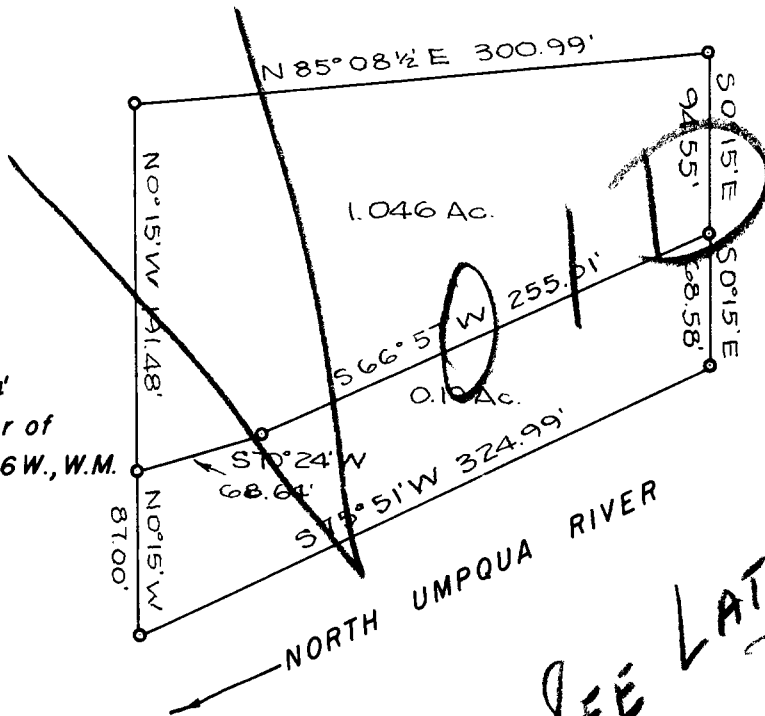


**COUNTY SURVEYORS FILE DATA  
DO NOT REMOVE FROM OFFICE**

Initial Point bears  
S 21° 58' W 1538.84'  
from the NE corner of  
Sec. 32, T. 26 S., R. 6 W., W.M.



*SEE LATER FILING  
DEC. 17, 1964  
L.L.*

SURVEY FOR DEED DESCRIPTION  
SURVEYED FOR JOHNIE L. DENTON  
LOT 2, ROSEBURG HOME ORCHARD TRACTS PLAT E  
SECTION 32, T. 26 S., R. 6 W., W.M.  
SURVEYED BY R. H. GEE  
OCTOBER, 1964 — SCALE 1" = 100'

FILED *L.L.*  
RECEIVED

DEC 14 1964

COUNTY SURVEYOR  
DOUGLAS COUNTY, ORE.

