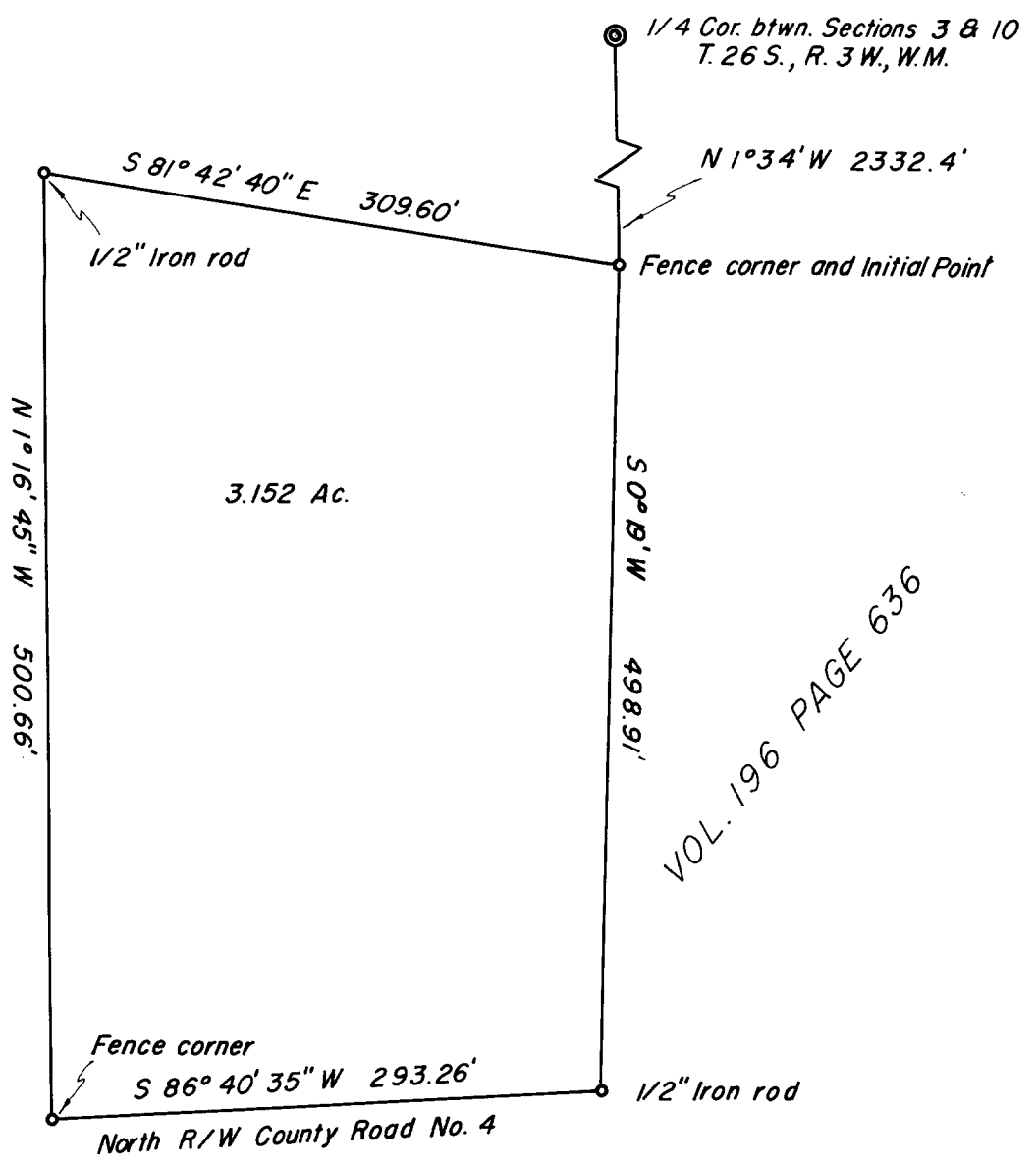


SURVEY FOR DEED DESCRIPTION
 SURVEYED FOR UMPQUA INDUSTRIES
 SECTION 10, T. 26 S., R. 3 W., W.M.
 SURVEYED BY R.H.GEE
 MARCH, 1965 SCALE 1" = 100'

COUNTY SURVEYORS FILE DATA
 DO NOT REMOVE FROM OFFICE



FILED *[Signature]*
 RECEIVED

MAR 18 1965

COUNTY SURVEYOR
 DOUGLAS COUNTY, ORE.



VOL. 196 PAGE 636