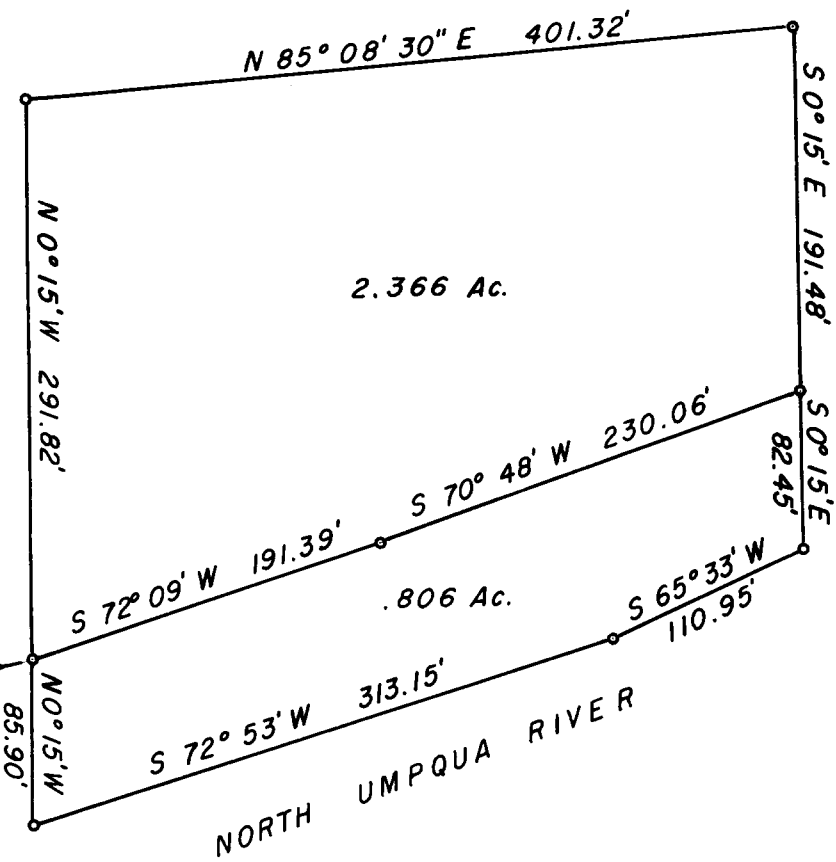


FILED
RECEIVED

DEC 17 1964

COUNTY SURVEYOR
DOUGLAS COUNTY, ORE.



Initial point 1/2" iron rod bears S 31° 58' 45" W 1841.00' from the N.E. corner of Section 32, T. 26 S., R. 6 W., W. M.

**COUNTY SURVEYORS FILE DATA
DO NOT REMOVE FROM OFFICE**



**SURVEY FOR DEED DESCRIPTION
SURVEYED FOR JOHNNIE L. DENTON
LOT 2, ROSEBURG HOME ORCHARD TRACTS PLAT E
SECTION 32, T. 26 S., R. 6 W., W. M.
SURVEYED BY R. H. GEE
OCTOBER, 1964 — SCALE 1" = 100'**