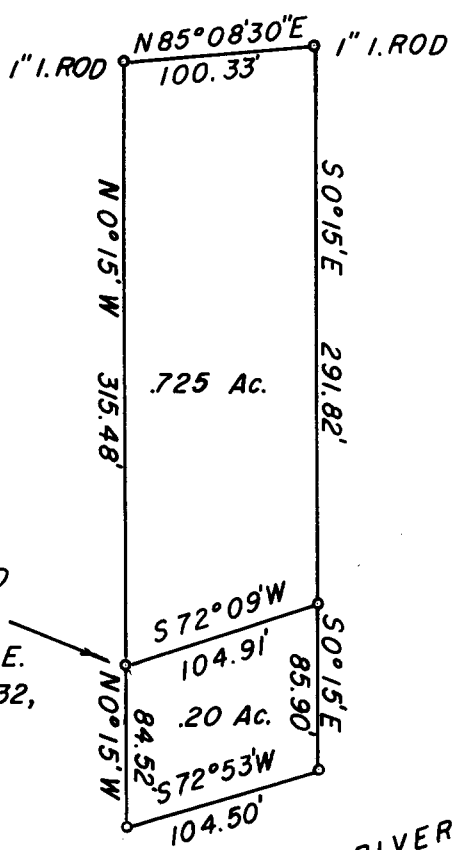


FILED
RECEIVED

DEC 17 1964

COUNTY SURVEYOR
DOUGLAS COUNTY, ORE.



INITIAL POINT 1" I. ROD
 BEARS S33°59'40"W
 1922.07' FROM THE N.E.
 CORNER OF SECTION 32,
 T. 26 S., R. 6 W., W.M.

NORTH UMPQUA RIVER

COUNTY SURVEYORS FILE DATA
DO NOT REMOVE FROM OFFICE



SURVEY FOR DEED DESCRIPTION
 SURVEYED FOR JOHNNIE L. DENTON
 LOT 2, ROSEBURG HOME ORCHARD TRACTS, PLAT E
 SECTION 32, T. 26 S., R. 6 W., W.M.
 SURVEYED BY R. H. GEE
 OCTOBER, 1964 — SCALE 1" = 100'