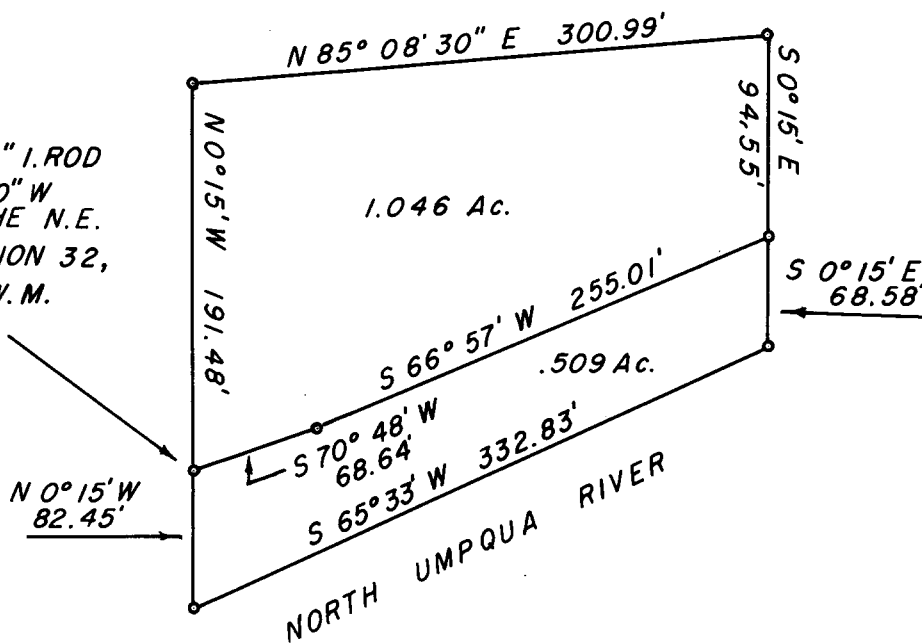


FILED  
RECEIVED

DEC 17 1964

COUNTY SURVEYOR  
POLK COUNTY, ORE.

INITIAL POINT 1/2" I. ROD  
BEARS S 21° 57' 30" W  
1538.92' FROM THE N.E.  
CORNER OF SECTION 32,  
T. 26 S., R. 6 W., W.M.



COUNTY SURVEYORS FILE DATA  
DO NOT REMOVE FROM OFFICE

SURVEY FOR DEED DESCRIPTION  
SURVEYED FOR JOHNNIE L. DENTON  
LOT 2, ROSEBURG HOME ORCHARD TRACTS PLAT E  
SECTION 32, T. 26 S., R. 6 W., W.M.  
SURVEYED BY R.H.GEE  
OCTOBER, 1964 — SCALE 1" = 100'

