

Cor. Found B.Ts. Stumps Scribed as Recorded.
 Set 1/2" I. Pipe New B.Ts. 16" Fir N. 47° 48' W. 40.9
 5" Madrona S. 3° 15' E. 56.2

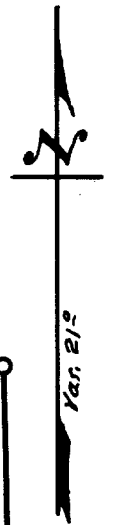
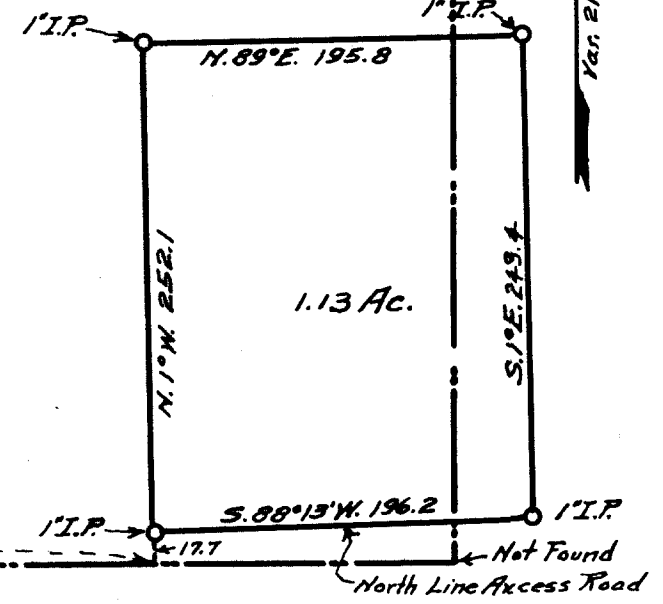
Briggs
 Cemetary

N. 132.0

S. 45° 30' E. 657.1
 N. 55° 15' W. 570.9

W. PRESTON D.L.C. #44

Cor. NOT Found Projected from
 N.E. Cor. Cemetary. Set 1" I.P. Brass Cap.
 marked INT. L. D.L.C. #44. L.S. 5
 3/8" Rod Set in Concrete Hwy R/W. N. 26° 55' W. 20.8
 3/8" Rod Set in Concrete Hwy. R/W. N. 63° 45' W. 9.9



COUNTY SURVEYOR'S OFFICE
 DOUGLAS COUNTY, OREGON.
 SURVEY FOR
 C.O. TAVENNER
 IN SECTION 20, T. 30S., R. 5W., W.M.
 GEO. J. WENDEROTH, DEPUTY. JULY 1964
 SCALE 1" = 100 FT.

REGISTERED
 OREGON
 LAND SURVEYOR

Geo. J. Wenderoth

MARCH 10, 1944
 George J. Wenderoth
 5

COUNTY SURVEYORS FILE DATA
 DO NOT REMOVE FROM OFFICE

FILED
 RECEIVED

JUL 9 1964

COUNTY SURVEYOR
 DOUGLAS COUNTY, ORE.

CS 51/295A

Interior "L" Corner of Wm. Preston D.L.C. #44 in
Section 20, T. 30 S, R. 5 W.

No bearing tree or Rock found of Original Corner.

Briggs Cemetery as run by same surveyor as
rerun D.L.C. and established Corner of D.L.C. taken
as tie to Corner. Found Original B.T.s (Stumps Now.)
scribed, 14" W. Oak N. 57° E. 9.2 ft. 22" W. Oak S. 35° E. 31.0 ft.

Set $\frac{1}{2}$ " I.P. for N.E. Cor. Cemetery.

Scribed 16" Fir N. 47° 48' W. 40.9 5" Madrona S. 3° 15' E. 56.2

Run South 132.0 ft. No sign of S.E. Cor. Cemetery.

S. 55° 15' E. 570.9 ft. (tie to Cem.) No sign of Corner.

Run from N.E. Cor. Cem. (21° Var.) S. 45° 30' E. 657.1 ft. intersect
above point of Corner.

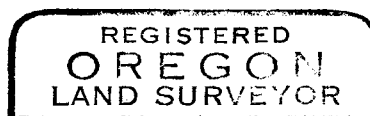
Set 1" I. Pipe with Brass Cap.

Bearing $\frac{5}{8}$ " I. Rod set in Cement R/W. Point Hwy. N. 26° 55' W. 20.8 ft.

$\frac{5}{8}$ " I. Rod set in Cement R/W. Point Hwy. N. 63° 45' W. 9.9 ft.

these R/W. points are marked Sta. 391+00 on New Highway.

July 7, 1964



Geo. J. Wenderoth

