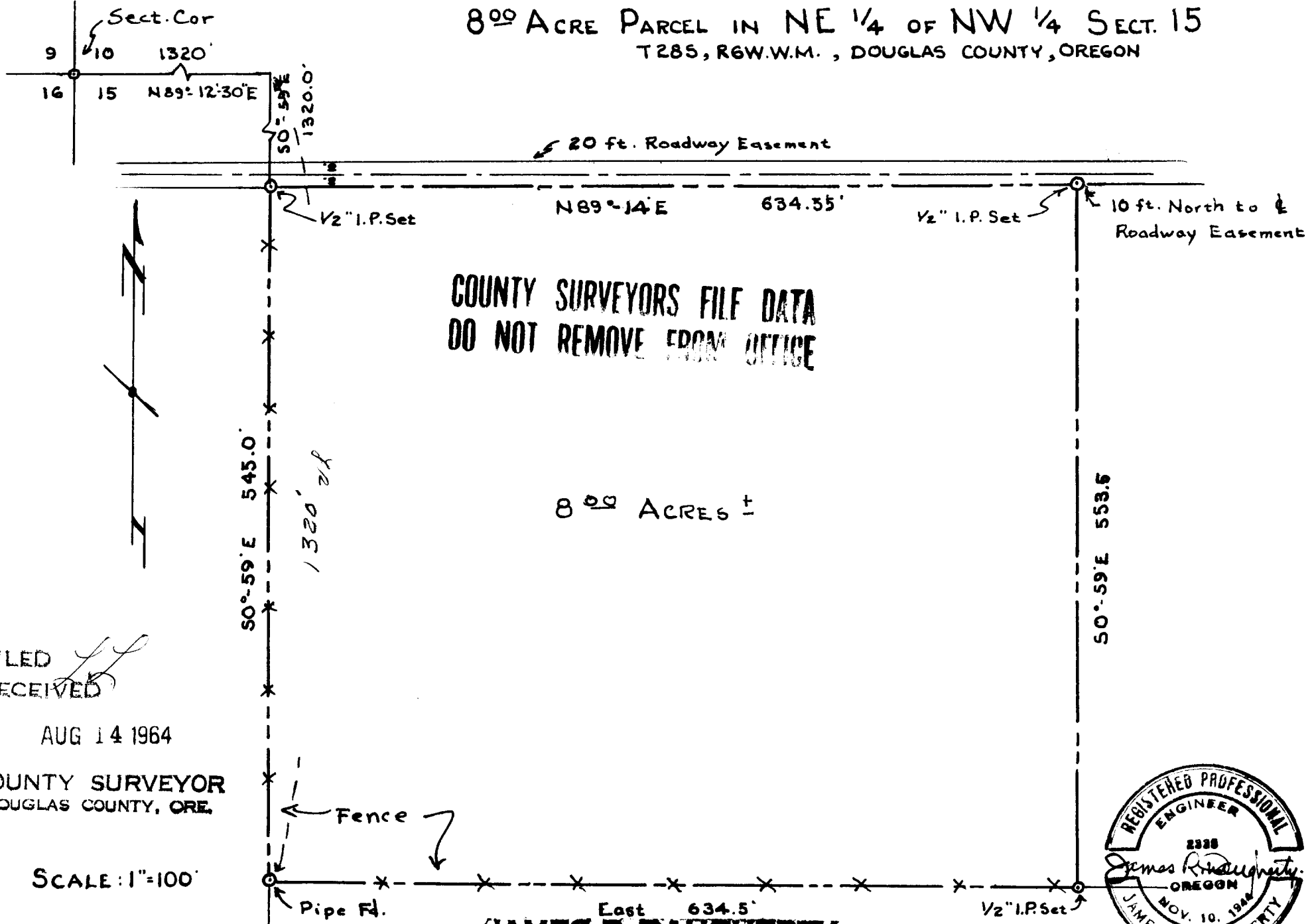
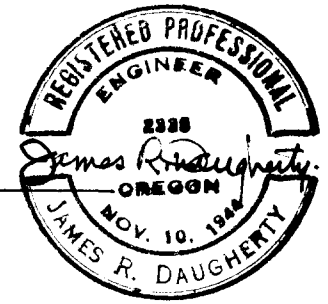


8⁰⁰ ACRE PARCEL IN NE 1/4 OF NW 1/4 SECT. 15
T28S, R6W.W.M., DOUGLAS COUNTY, OREGON



COUNTY SURVEYORS FILE DATA
DO NOT REMOVE FROM OFFICE



JAMES R. DAUGHERTY
CIVIL-SANITARY ENGINEER
WINSTON, OREGON

FILED
RECEIVED

AUG 14 1964

COUNTY SURVEYOR
DOUGLAS COUNTY, ORE.

SCALE: 1"=100'

JUNE 15, 1964