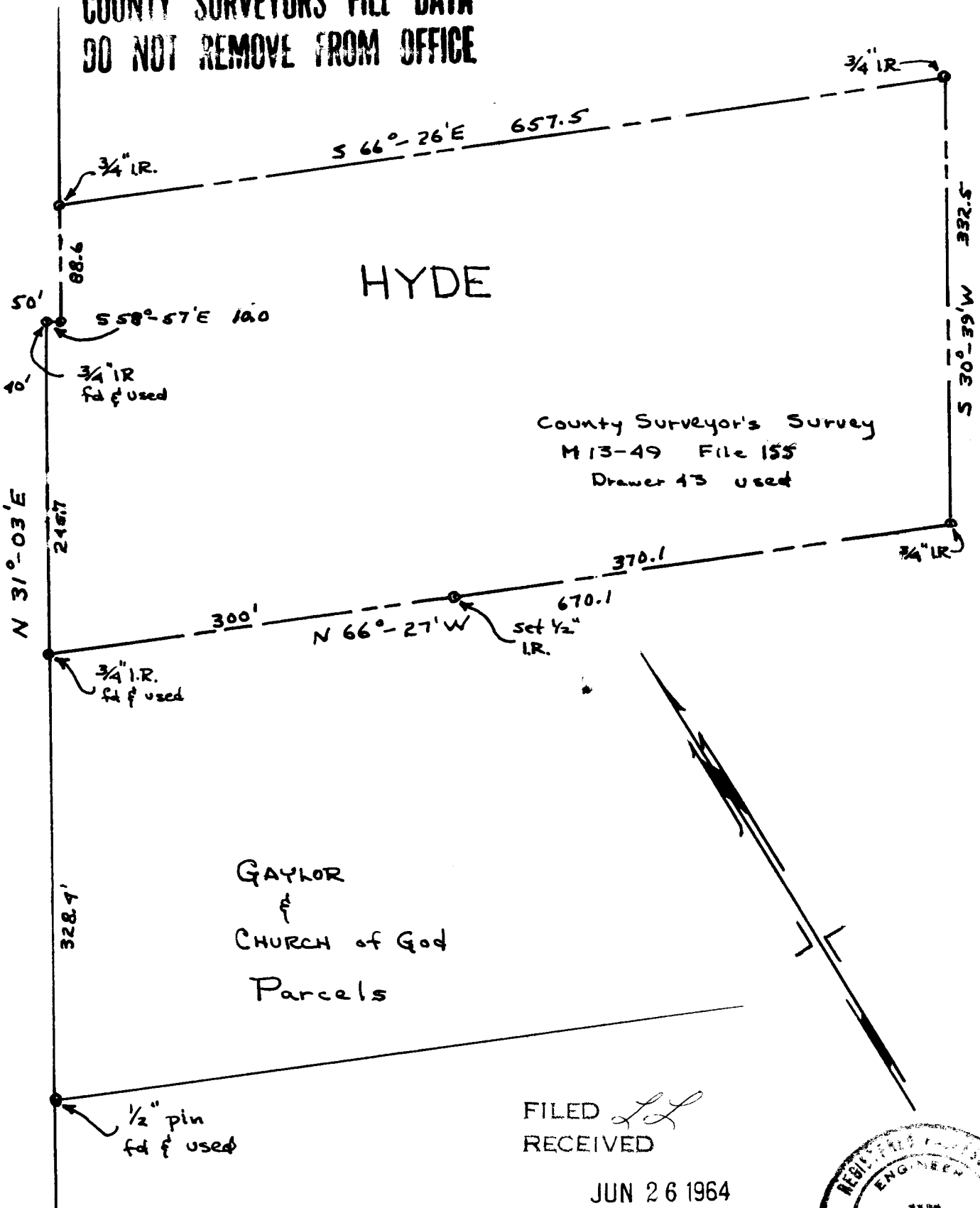


HYDE PARCEL · SECT. 21 · T26S · R4W · W.M. Douglas County, Oregon

COUNTY SURVEYORS FILE DATA
DO NOT REMOVE FROM OFFICE

North Umpqua Highway

To Roseburg



HYDE

County Surveyor's Survey
M 13-49 File 155
Drawer 43 used

GAYLOR
&
CHURCH of God
Parcels

FILED *LL*
RECEIVED

JUN 26 1964

JAMES R. DAUGHTERY COUNTY SURVEYOR
DOUGLAS COUNTY, ORE.
CIVIL-SANITARY ENGINEER
WINSTON, OREGON

Scale 1" = 100'
May 2, 1964



C. S. File No. 51/291