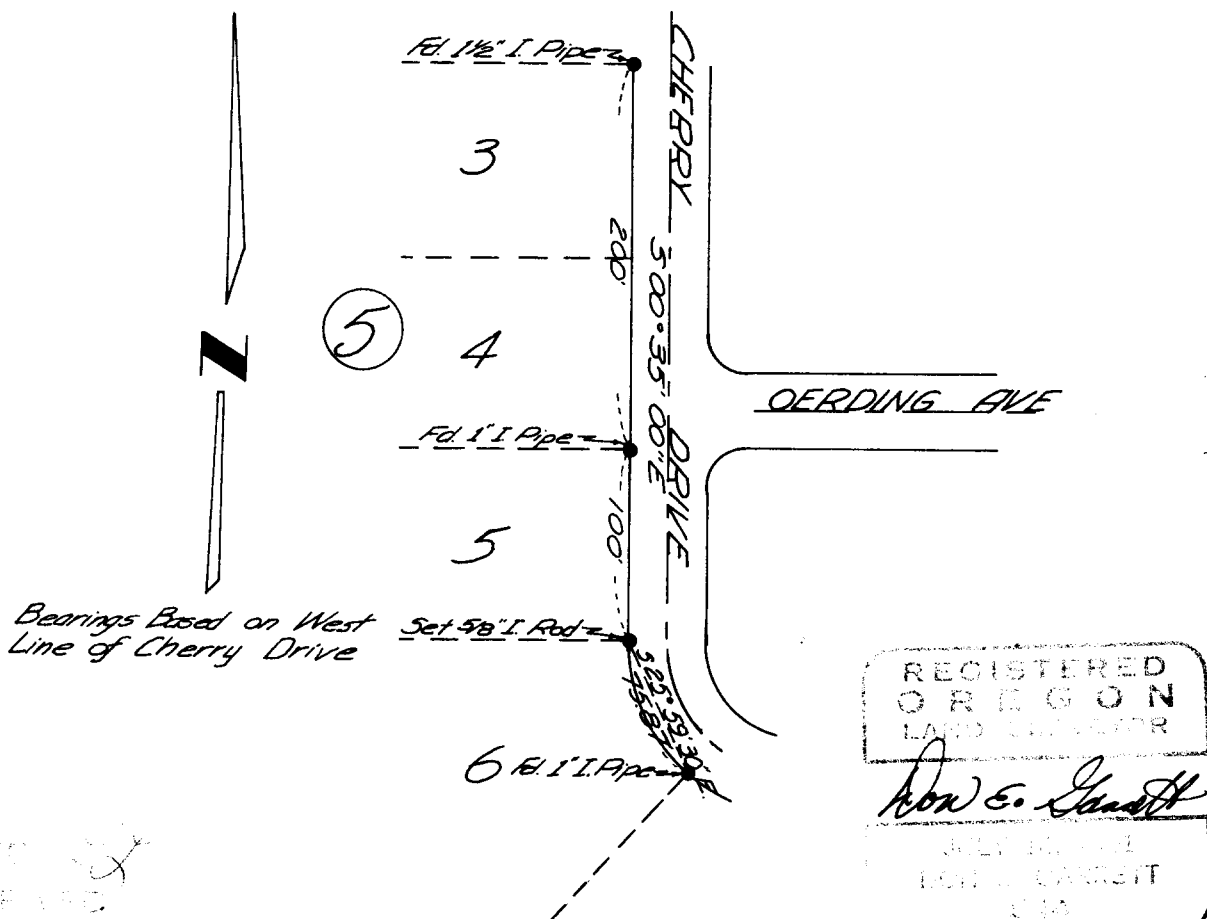


COUNTY SURVEYORS FILE DATA

DO NOT REMOVE FROM OFFICE

Survey to Establish the South East  
Corner of Lot 5 Block 5  
Garden Homes Subdivision  
Sec. 14 T.27S. R.6W. W.M.  
Surveyed for S.&S. Builders Feb. 6, 1965  
Surveyed by Don Garrett Scale 1"=50'



FILED  
RECORDED

MAR 17 1965

COUNTY SURVEYOR  
DOUGLAS COUNTY, ORE.