

**BLOCKS 4 & 5 GARDEN HOMES SEC. 14 T27S
R6W W.M. COUNTY SURVEYORS FILE DATA
DO NOT REMOVE FROM OFFICE**

Surveyed for S&S Builders Inc.

Surveyed by Don E. Garrett

Feb. 6, 1965

Scale 1" = 50'

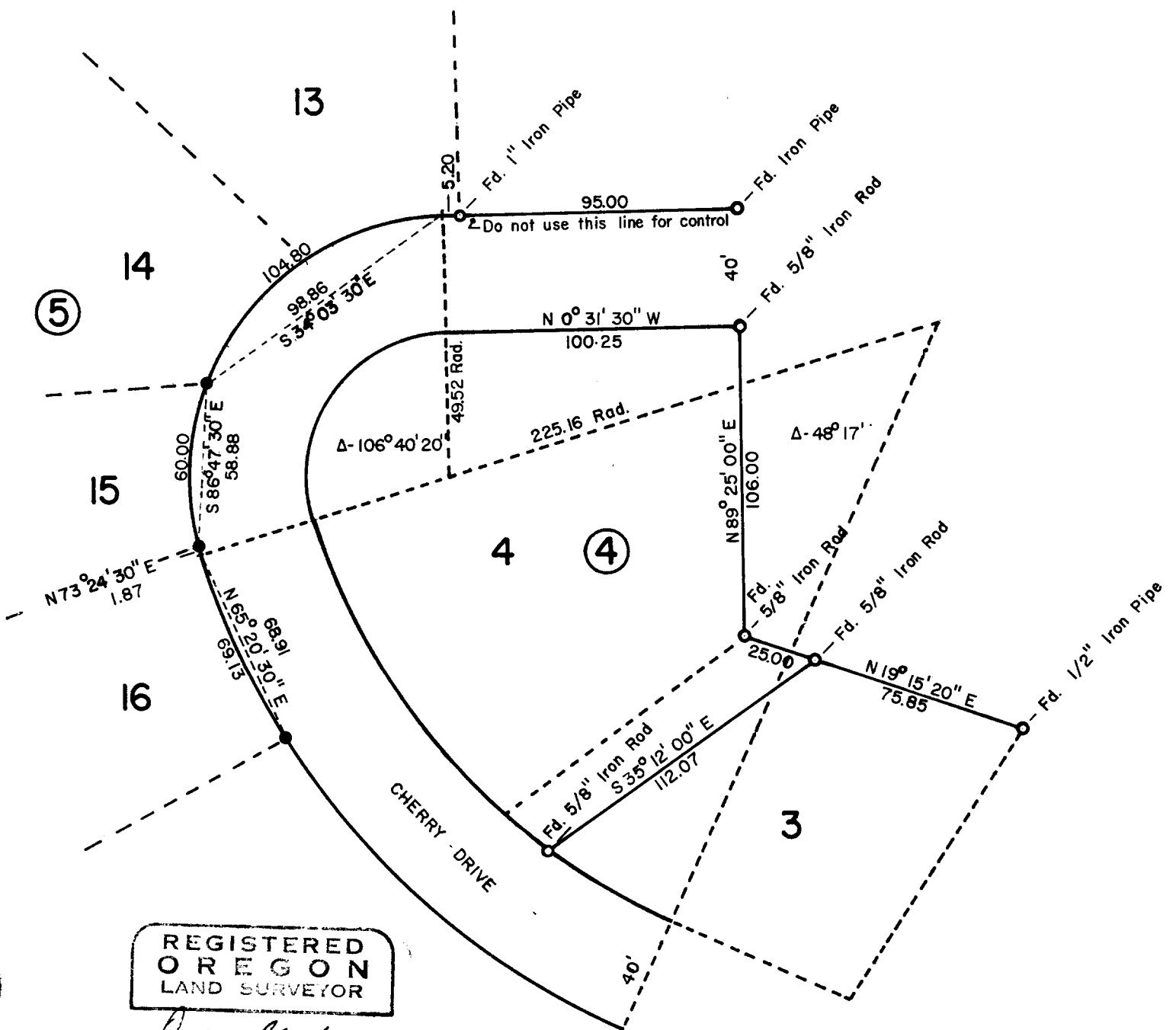
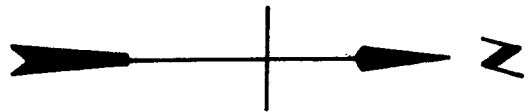
Bearings and curve data are based on Minor Land Partitioning survey Vol. I Pg. II.

● - Denotes 5/8" Iron Rod Set

FILED
RECEIVED

FEB 12 1965

COUNTY SURVEYOR
DOUGLAS COUNTY, ORE.



REGISTERED
OREGON
LAND SURVEYOR

Don E. Garrett
JULY 14, 1961
DON E. GARRETT,
544