

COUNTY SURVEYORS FILE DATA

DO NOT REMOVE FROM OFFICE

A SURVEY TO RELOCATE PROP. CORS.

LOT 7 SEC.13 T.24S. R.7W. W.M.

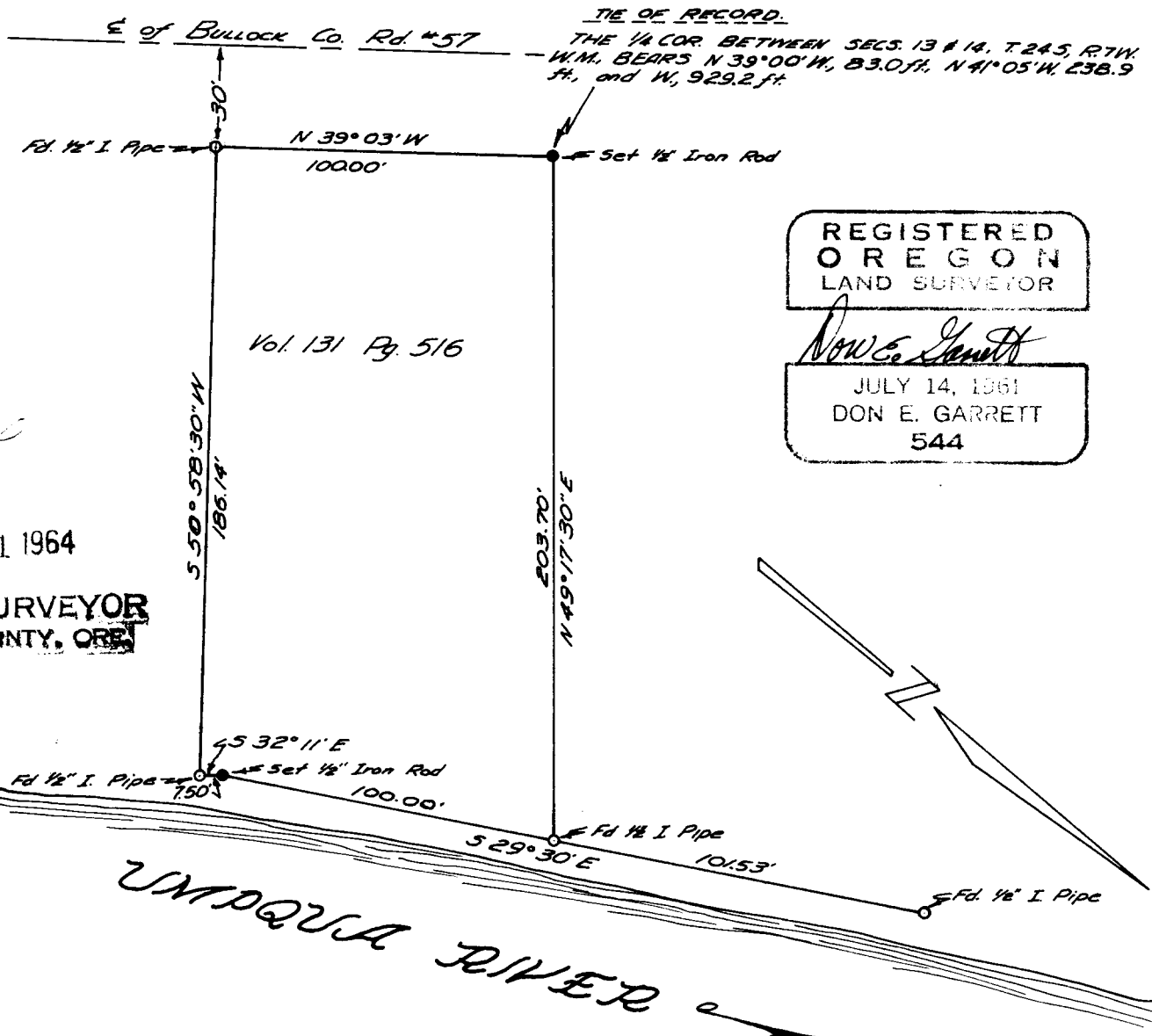
DOUGLAS COUNTY, OREGON

SURVEYED FOR E. J. LANGLOIS

SURVEYED BY DON E. GARRETT

NOV. 28, 1964 SCALE 1"=50'

BASE OF BEARINGS: N. E. LINE OF PROP. SURVEYED  
S. 29° 30' E.



FILED  
RECEIVED  
DEC - 1 1964  
COUNTY SURVEYOR  
DOUGLAS COUNTY, ORE.