

# SURVEY IN LOTS 6 & 7 BLOCK I GLENGARY FRUIT LANDS

Surveyed for J.C. Leonard

June 11, 1964

COUNTY SURVEYOR

Surveyed by Don Garrett

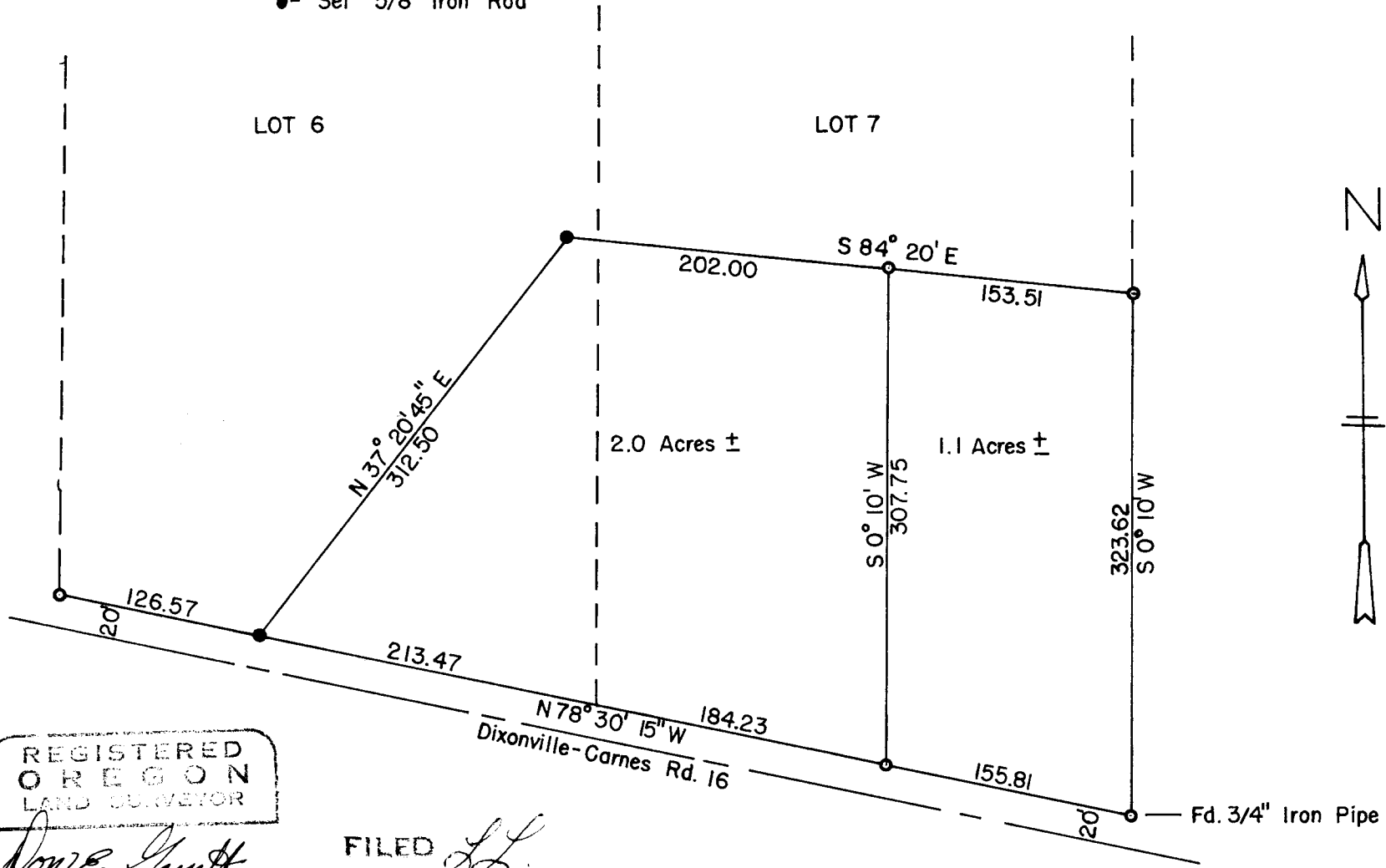
Scale 1" = 100'

DO NOT REMOVE FROM OFFICE

Note: Bearings are based on the North Line of Dixonville - Carnes Road No. 16 S 78° 30' 15" E Map File 27-61

o - Fd. 5/8" Iron Rod

● - Set 5/8" Iron Rod



REGISTERED  
OREGON  
LAND SURVEYOR  
*Don E. Garrett*  
JULY 14, 1961  
DON E. GARRETT  
544

FILED *LL*  
RECEIVED

JUN 17 1964

COUNTY SURVEYOR  
DOUGLAS COUNTY, ORE.

S. File No. 51/290-1