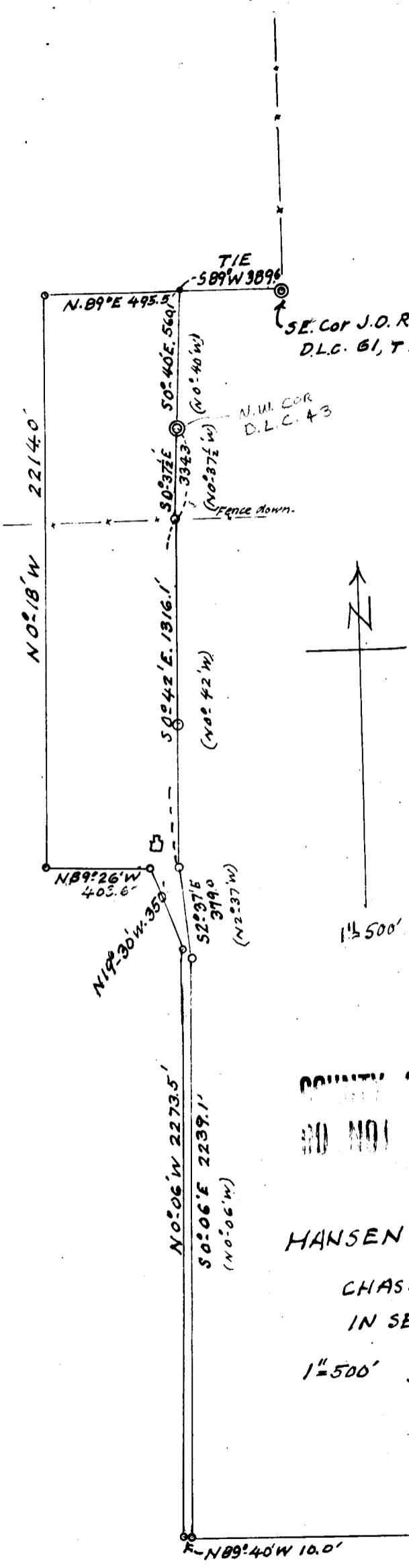


FILED *LL*
RECEIVED

JUN 16 1964

COUNTY SURVEYOR
DOUGLAS COUNTY, ORE.



COUNTY SURVEYORS THE DATA
SHOULD NOT BE REMOVED FROM OFFICE

HANSEN & L. RILEY & WOOD
TO

CHAS. VOYTILLA
IN SEC 21 $\frac{26}{6}$

1" = 500' *Hansen* Mar. 1947