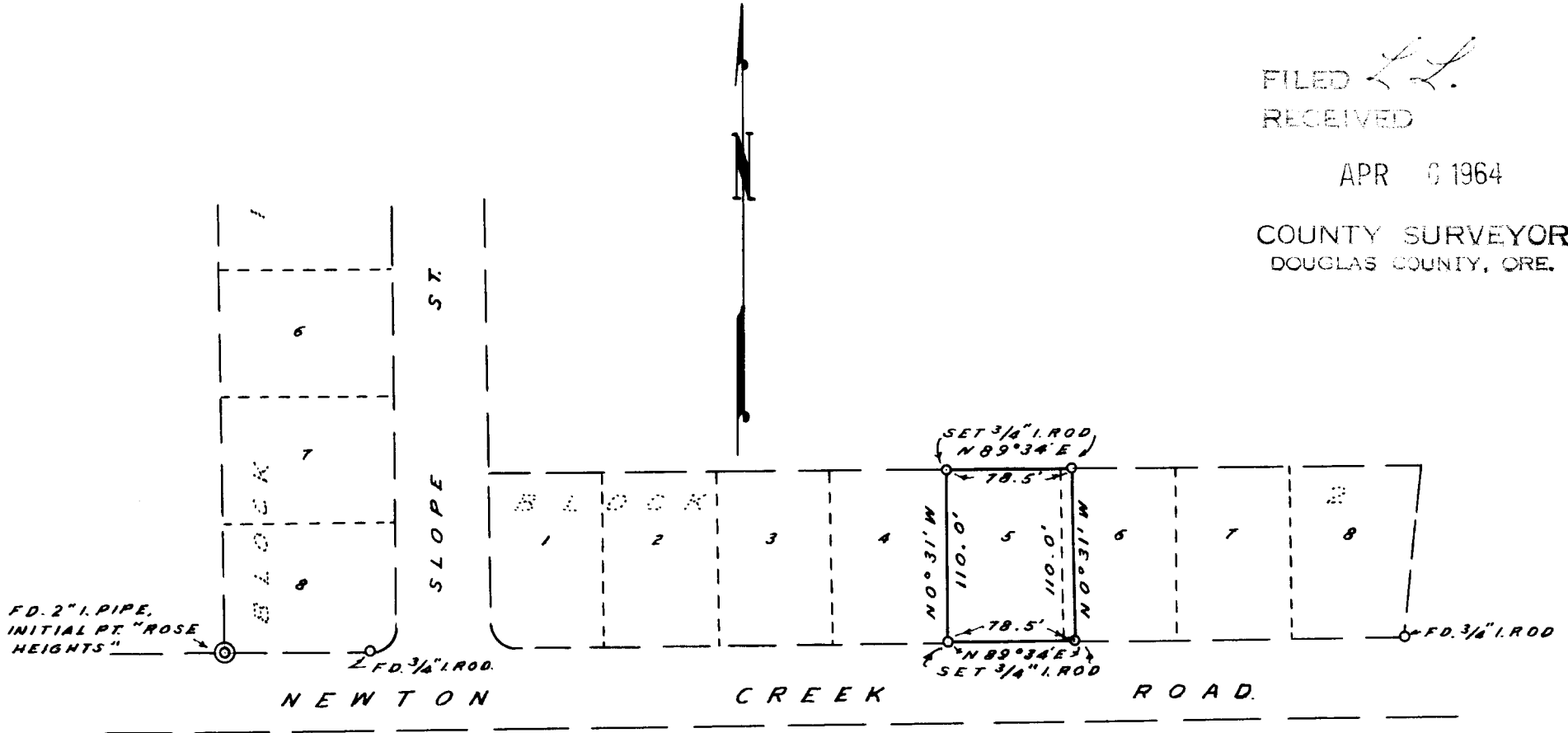


FILED *L.L.*  
RECEIVED

APR 6 1964

COUNTY SURVEYOR  
DOUGLAS COUNTY, ORE.



*T. 27-5 n. 6. w. e.*

SURVEY TO MONUMENT PROPERTY CORRS.,  
IN LOT 5 & 6, BLOCK 2, ROSE HEIGHTS, A  
SUBDIVISION IN TR. 1, PLAT 1, R. O. CO.

SURVEYED MAR., 1964  
JAMES W. BYRON

BY  
SCALE 1"=100'

SURVEYED FOR D. HERMMAN

COUNTY SURVEYORS FILE DATA  
DO NOT REMOVE FROM OFFICE

REGISTERED  
OREGON  
LAND SURVEYOR  
*James W. Byron*  
NOV. 6, 1953  
JAMES W. BYRON  
303