

**COUNTY SURVEYORS FILE DATA**  
**DO NOT REMOVE FROM BOOK**

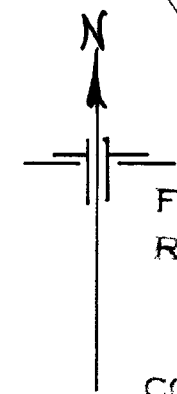
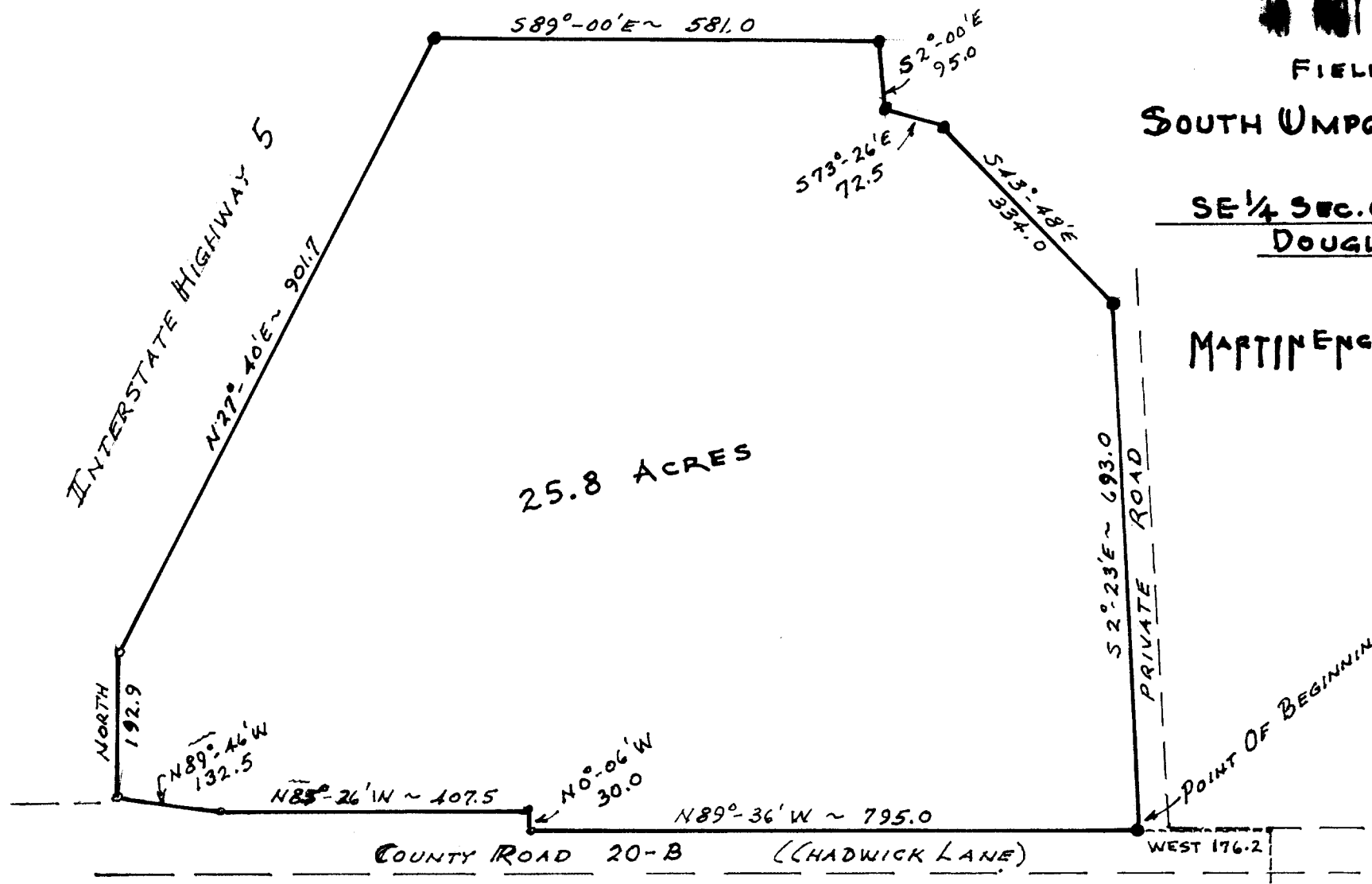
FIELD SURVEY & PLAT FOR  
**SOUTH UMPQUA SCHOOL DISTRICT No. 19**  
 MYRTLE CREEK, ORE.

SE 1/4 SEC. 6 TWP. 30S RGE. 5W W.M.  
DOUGLAS COUNTY, OREGON

SCALE: 1" = 200'

MARTIN ENGINEERING SERVICE - MYRTLE CREEK

NOVEMBER 1964



FILED *LL*  
 RECEIVED

NOV 12 1964

COUNTY SURVEYOR  
 DOUGLAS COUNTY, ORE.

- 5/8" IRON ROD SET BY ORE. ST. HWY. DEPT.
- SET 3/4" IRON PIPE & RM

