

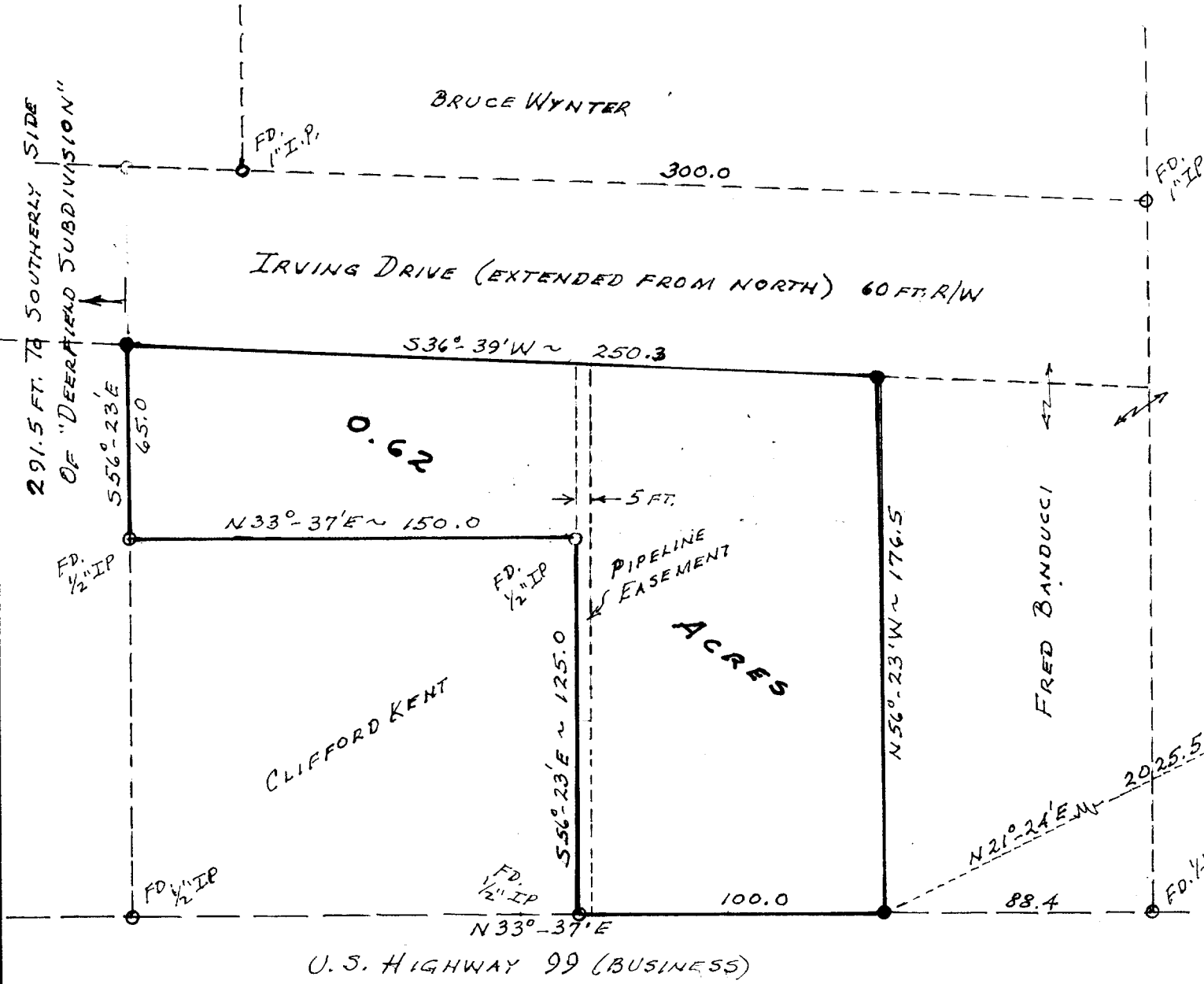
COUNTY SURVEYORS FILE DATA
 ● MUST REMOVE FROM OFFICE

FILED
 RECEIVED

OCT 1 1964

COUNTY SURVEYOR
 DOUGLAS COUNTY, OREGON

291.5 FT. TO SOUTHERLY SIDE
 OF "DEERFIELD SUBDIVISION"



● SET 3/4" IRON PIPE



A FIELD SURVEY & PLAT FOR
 ALL POINTS REALTY
 ROSEBURG, OREGON

JAMES WEAVER D.L.C. No. 37 SEC. 5
 T30S R5W W.M. DOUGLAS COUNTY, OREGON

SCALE 1 IN. = 50 FT.

MARTIN ENGINEERING SERVICE - MYRTLE CREEK

AUGUST 1964