

T22S R7W

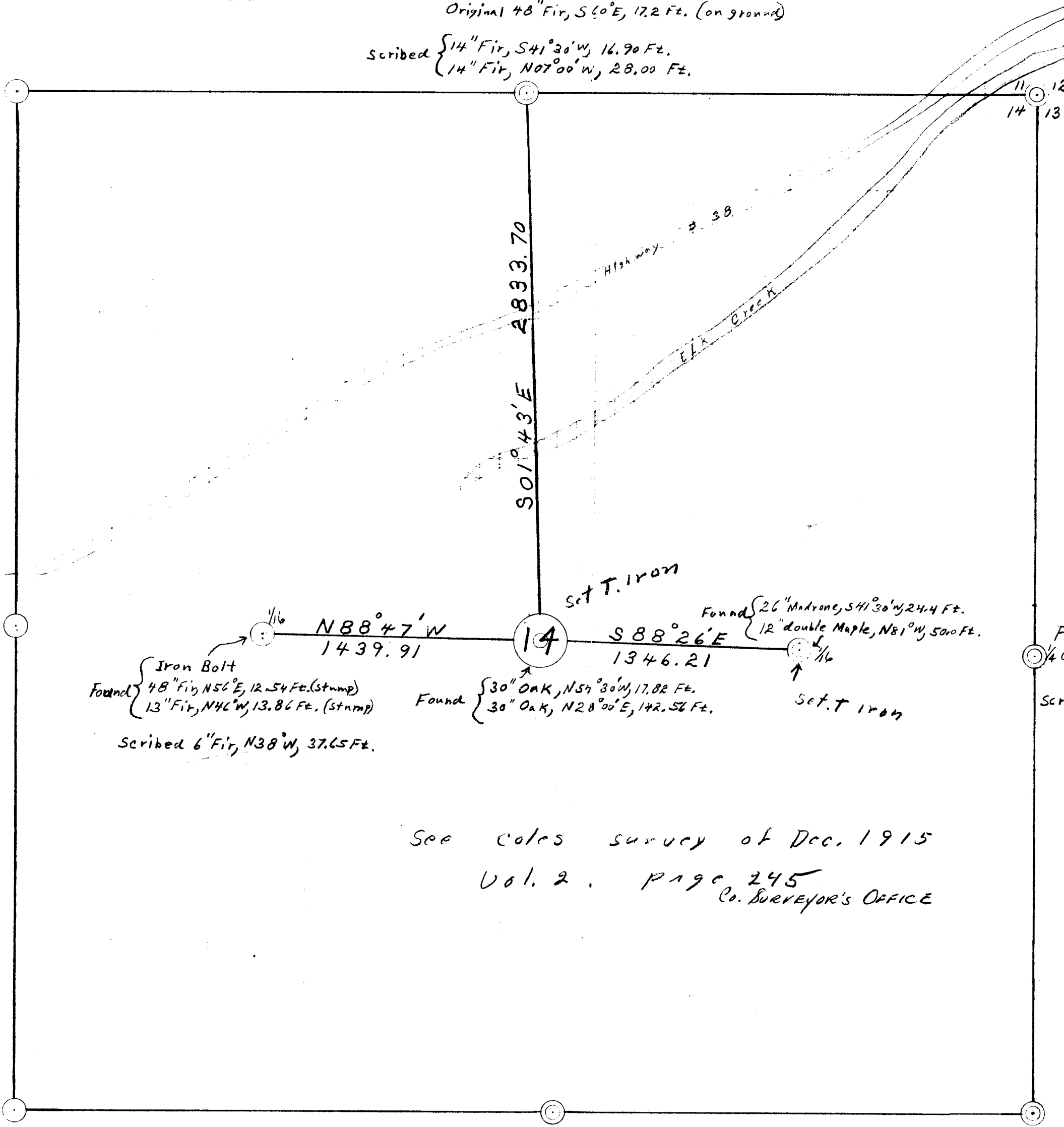
REGISTERED
OREGON
LAND SURVEYOR
Wilford N. Haines
MAY 7, 1948
WILFORD N. HAINES
238

Found hole in ground and some roots
N 46° E, 36.96 Ft.
Original 48" Fir, S 60° E, 17.2 Ft. (on ground)

Scribed { 14" Fir, S 41° 30' W, 16.90 Ft.
14" Fir, N 07° 00' W, 28.00 Ft.

Scribed:
24" Alder, S 70° W, 11.0 Ft.
12" Fir, S 31° W, 30.9 Ft.
8" Fir, S 25° E, 23.8 Ft.
12" W. Fir, N 74° E, 22.2 Ft.

This corner set from existing
physical objects.



Found { Iron Bolt
48" Fir, N 56° E, 12.54 Ft. (stump)
13" Fir, N 46° W, 13.86 Ft. (stump)
Scribed 6" Fir, N 38° W, 37.65 Ft.

Found { 30" Oak, N 54° 30' W, 17.82 Ft.
30" Oak, N 28° 00' E, 142.52 Ft.

Found { 26" Madrone, S 41° 30' W, 24.4 Ft.
12" double Maple, N 81° W, 50.0 Ft.

Found { 72" Fir, N 45° 15' E, 93.7 Ft. (stump)
72" Fir, S 58° 30' E, 101.6 Ft. (stump)
30" Ced. N 01° E, 17.16 Ft. (stump)

Scribed { 14" Fir, N 11° 00' E, 41.00 Ft.
22" Fir, N 42° 00' W, 124.70 Ft.

See Coles survey of Dec. 1915
Vol. 2. Page 245
Co. Surveyor's Office

FILED *L.L.*
RECEIVED

MAR 2 1964

COUNTY SURVEYOR
DOUGLAS COUNTY, ORE.

C. S. File No. 51/282