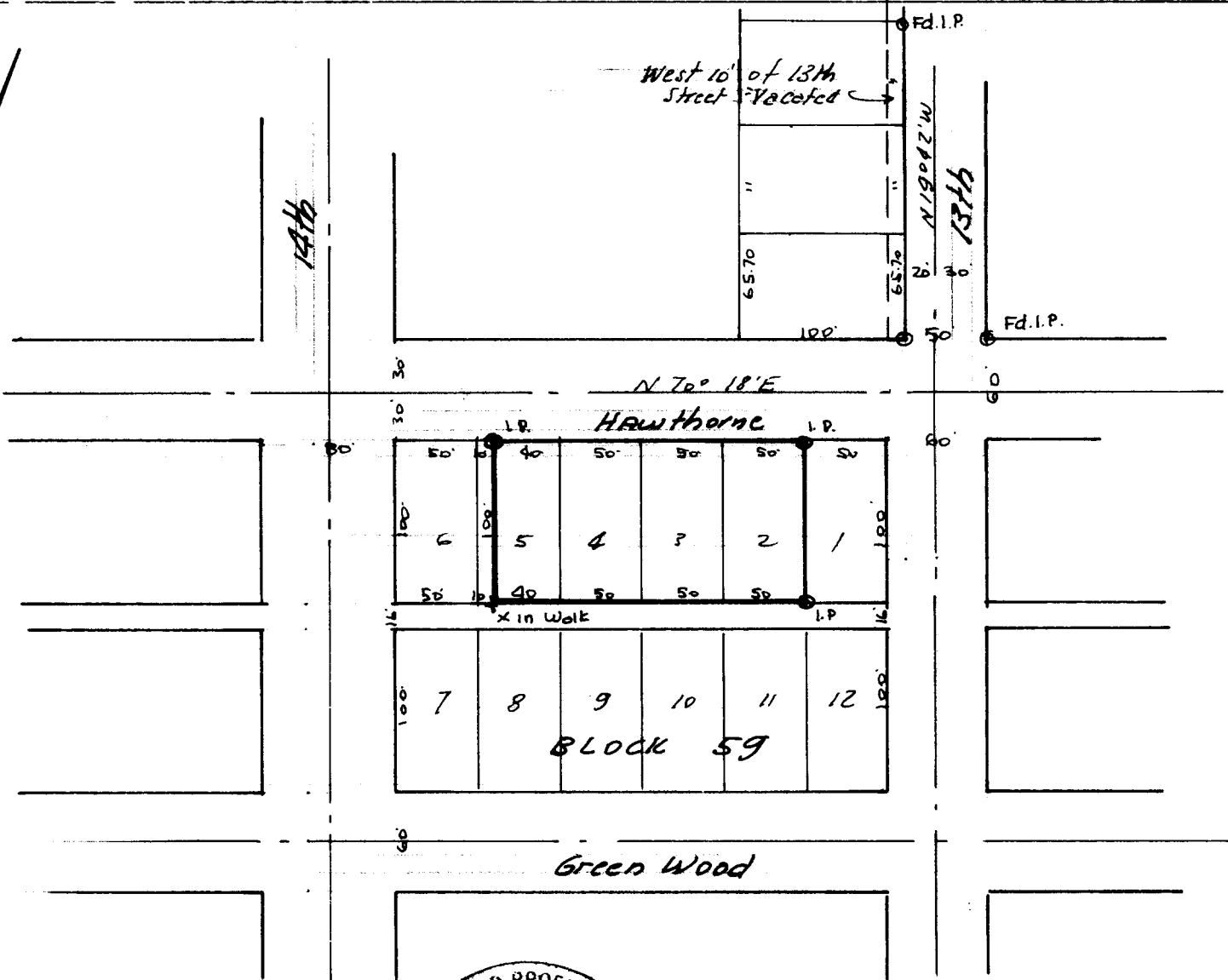


COUNTY SURVEYORS FILE DATA  
DO NOT REMOVE FROM OFFICE



FILED *LL*  
RECEIVED

MAR 15 1965

COUNTY SURVEYOR  
DOUGLAS COUNTY, ORE.



Property Survey  
Lots 2-3-4 & East 40' Lot 5  
BLOCK 59, Railroad Addn  
Reedsport, Oregon  
Scale: 1" = 100' 3-12-65  
For: Bay Realty - 720 S. Broadway  
Coos Bay, Oregon

T21S R12W SEC. 34