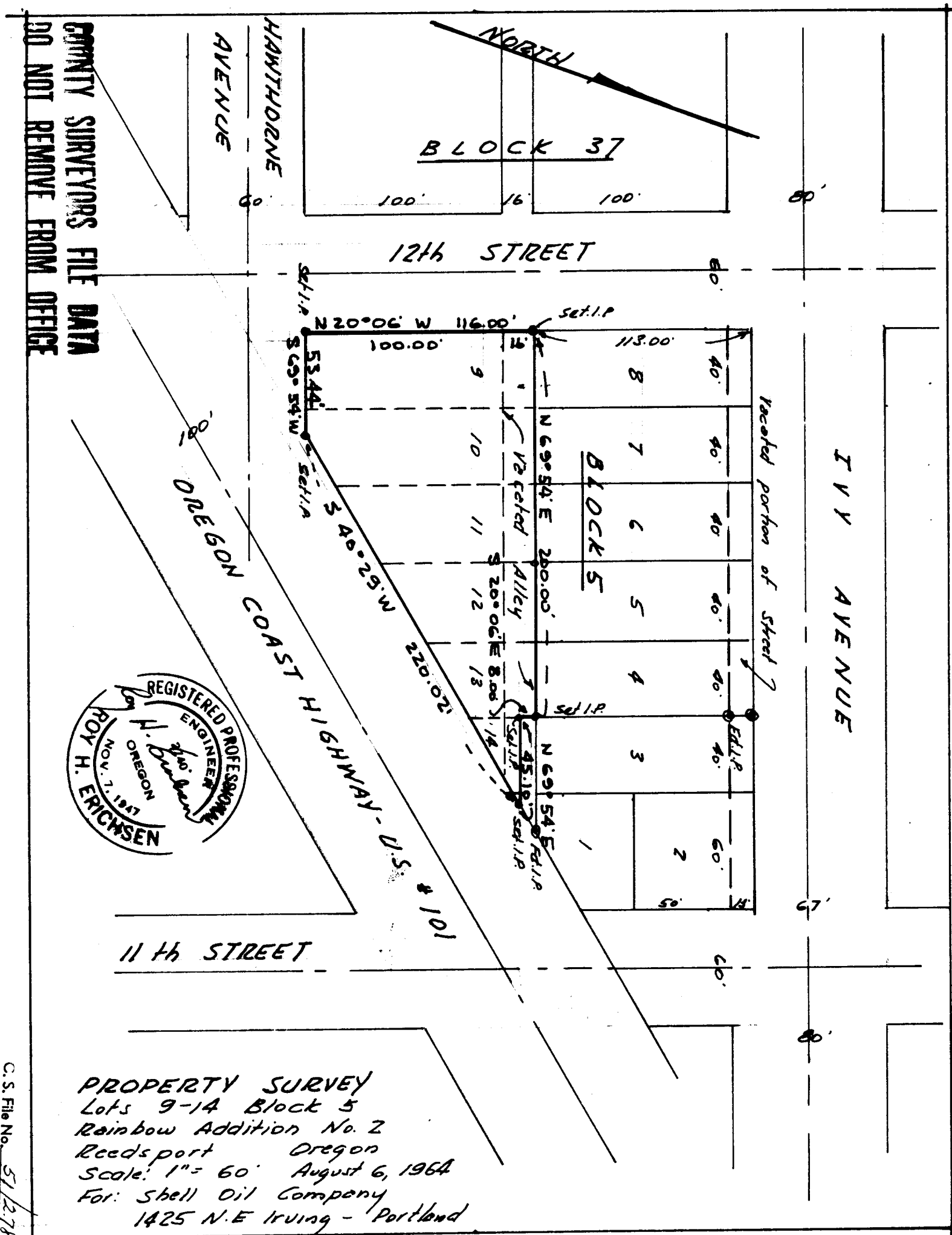


FILED *LL*  
RECEIVED

MAR 12 1965

COUNTY SURVEYOR  
DOUGLAS COUNTY, ORE.

COUNTY SURVEYORS FILE DATA  
DO NOT REMOVE FROM OFFICE



PROPERTY SURVEY  
 Lots 9-14 Block 5  
 Rainbow Addition No. 2  
 Reedsport Oregon  
 Scale: 1" = 60' August 6, 1964  
 For: Shell Oil Company  
 1425 N.E. Irving - Portland

C.S. File No. 51278-95

T. 21 S. R. 12 W., NE SE 1/4 Sec 34