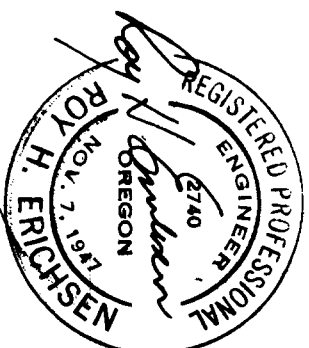
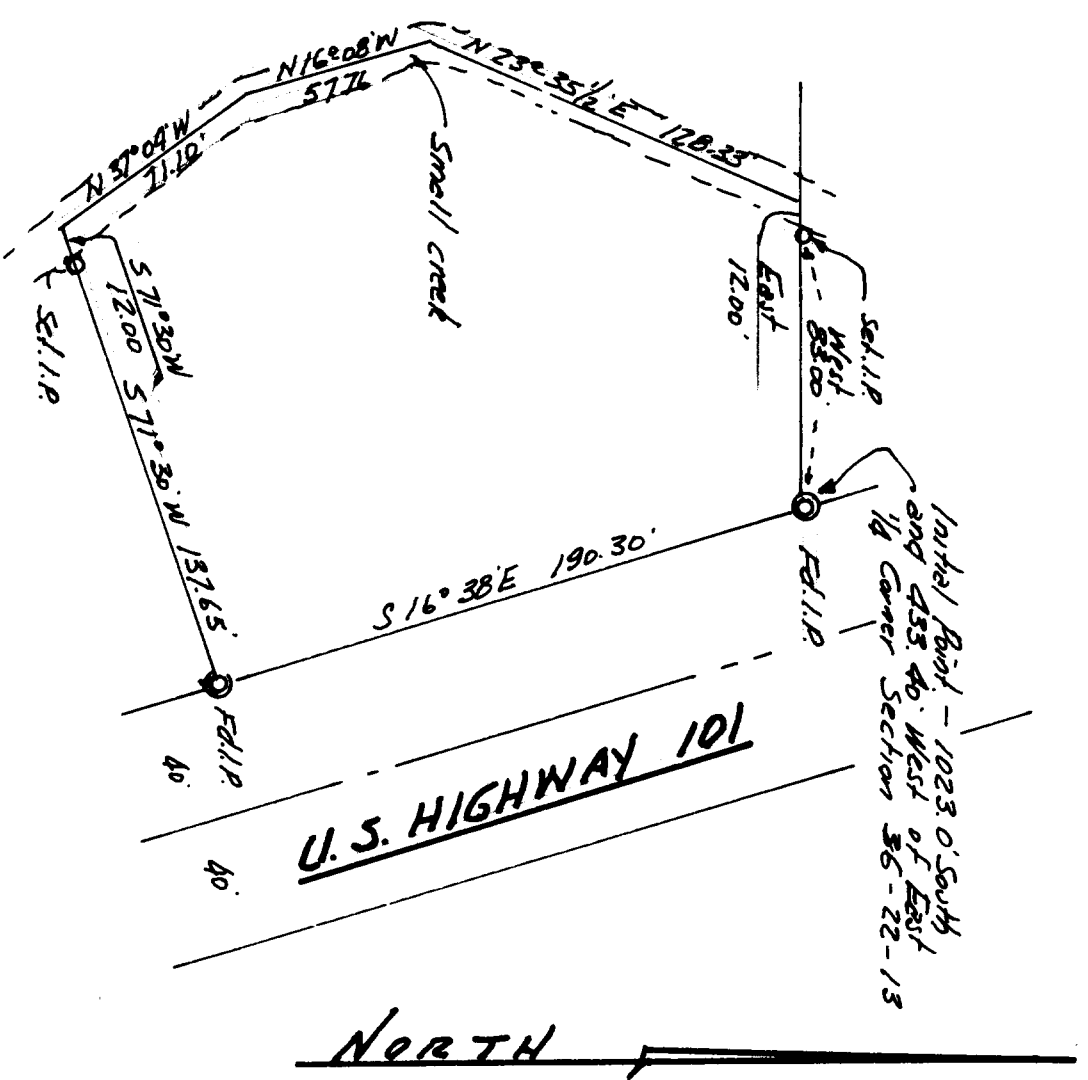


51 278 / 15 8-3

COUNTY SURVEYORS FIELD DATA
DO NOT REMOVE FROM OFFICE

C.S. File No. 51 278 p-3



Property Survey
Portions N.E. 1/4 Section 36
Township 22 South, Range 13 W.W.M.
Douglas County, Oregon
Scale: 1" = 60'
Feb. Jeff. Light foot

COUNTY SURVEYOR
DOUGLAS COUNTY, ORE.

MAR 13 1964

FILED
RECEIVED
J.F.