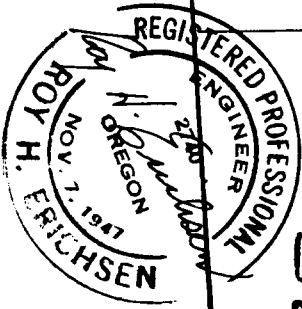
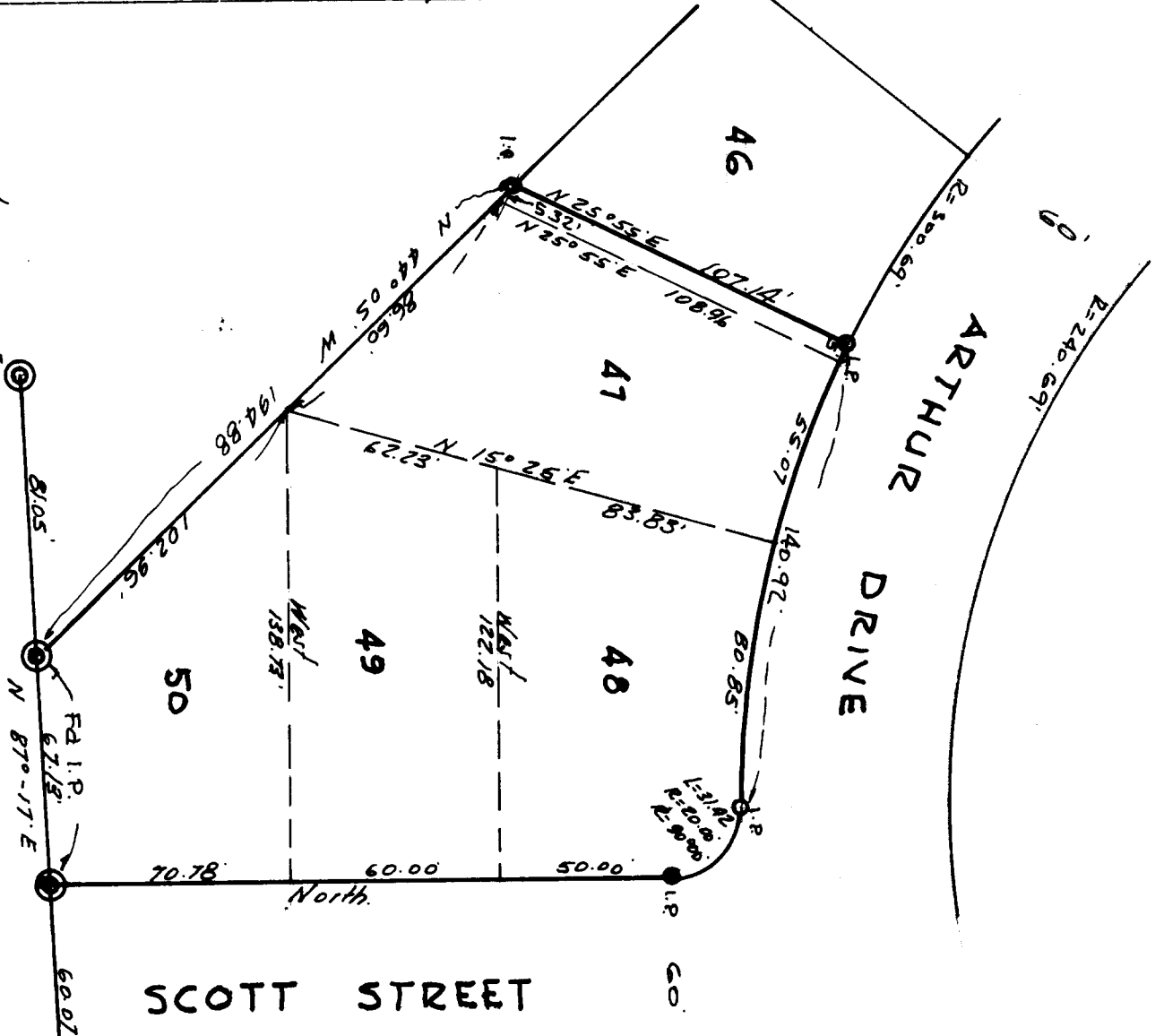


Fd. I.P. = 1/4 Corner  
 Sections 3 & 4  
 TWP 22 S, R 12W W/4



COUNTY SURVEYORS FILE DATA  
 DO NOT REMOVE FROM OFFICE

**PROPERTY SURVEY**  
 Lots 50 - 49 - 48 - 47 & East 5.00' Lnt 46  
 Blot of Renbrook Subdivision  
 City of Reedsport, Oregon  
 Scale: 1" = 50' 2-8-1964  
 For: Sund Real Estate

FILED *L.L.*  
 RECEIVED

FEB 10 1964

COUNTY SURVEYOR  
 DOUGLAS COUNTY, ORE.

T. 22 - 12 SEC 3 SW NW 1/4

C. S. File No. 51/278