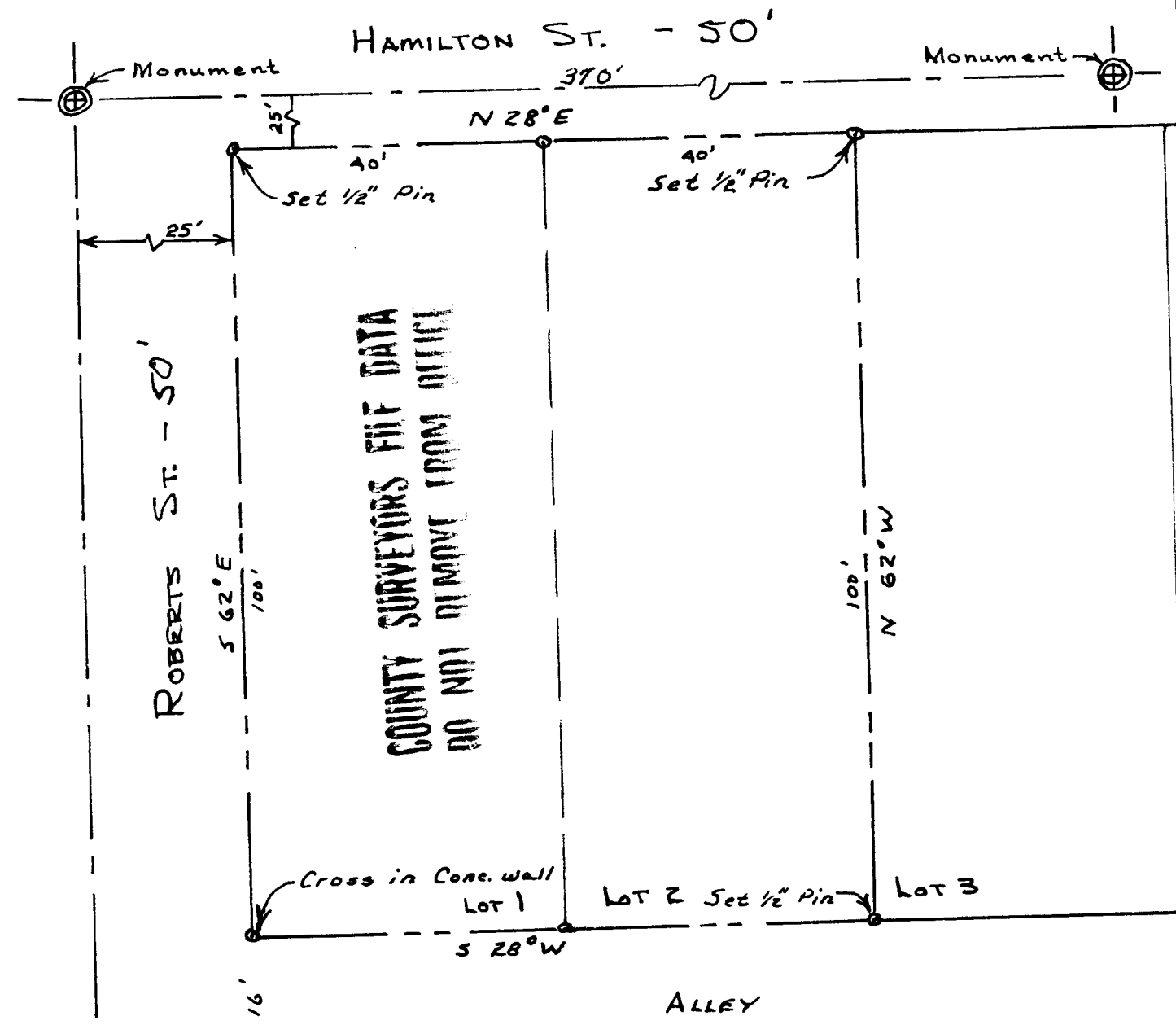
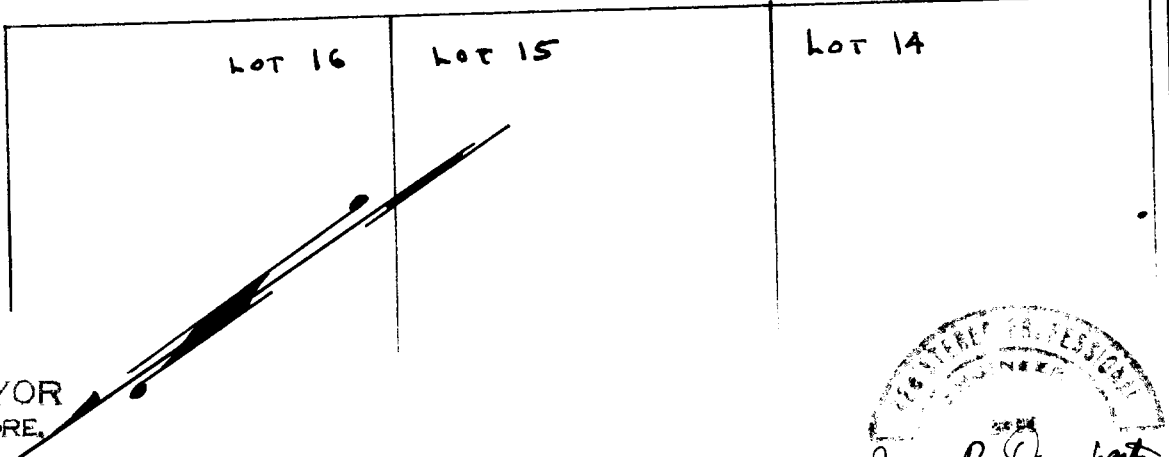


LOTS 1 & 2 - BLOCK 19 - WAITE'S ADDITION - ROSEBURG, ORE.
 Ralph Mendenhall



COUNTY SURVEYORS FILE DATA
 DO NOT REMOVE FROM OFFICE



FILED *LL*
 RECEIVED
 MAY 26 1964

COUNTY SURVEYOR
 DOUGLAS COUNTY, ORE.

Scale 1" = 20'
 April 28, 1964

JAMES R. DAUGHERTY
 CIVIL-SURVEYING ENGINEER
 WINSTON, OREGON

