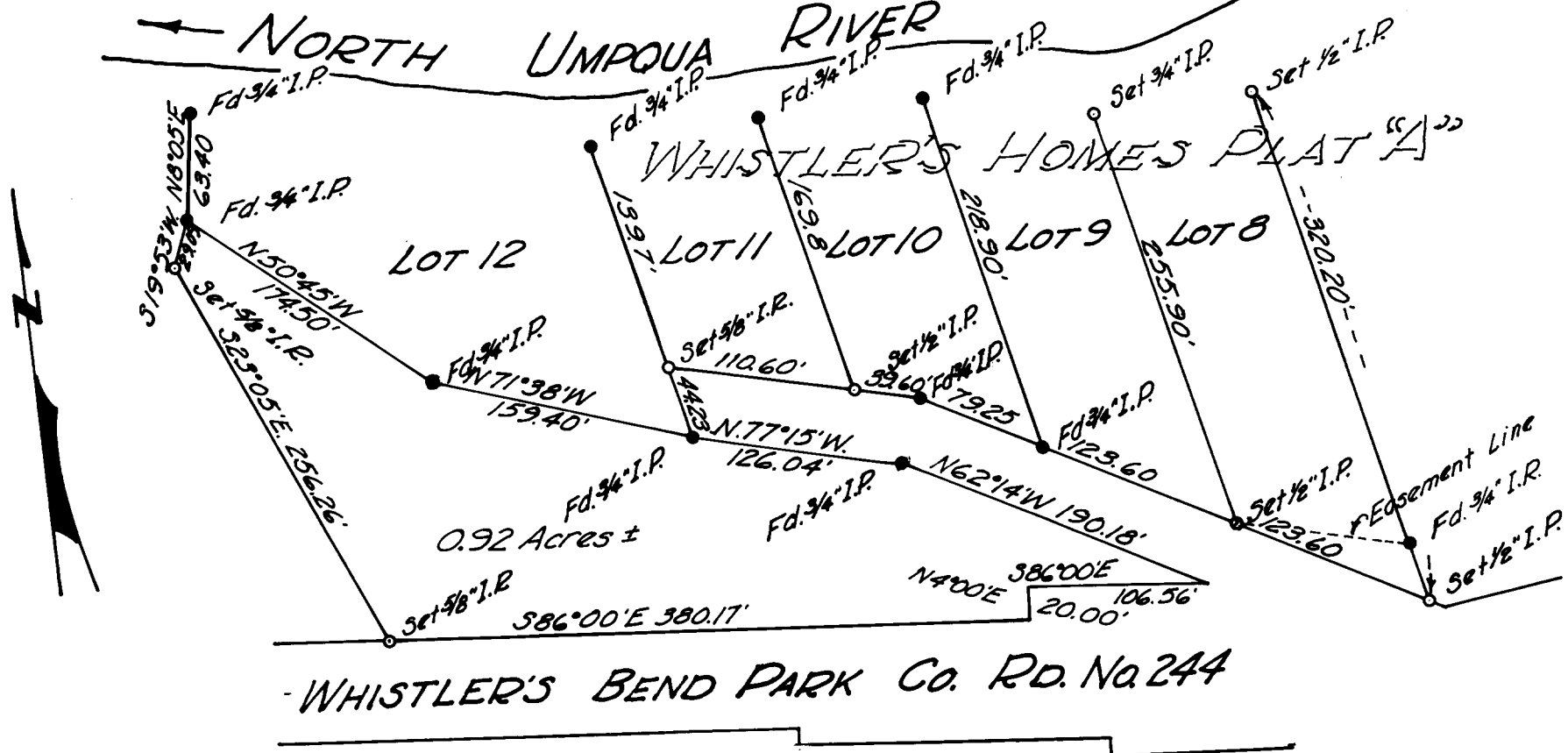


SECTION 17, T. 26 S., R. 4 W.W.M.

NORTH UMPOUA RIVER



SURVEY FOR DEED DESCRIPTION
& LOT CORNER RECOVERY

FOR ART ANDRUS

December 15, 1963

Scale 1"=100'

DO NOT REMOVE FROM OFFICE

REGISTERED
OREGON
LAND SURVEYOR

Glenn S. Baughman

JULY 14, 1961
GLENN S. BAUGHMAN
536

FILED *LL*
RECEIVED

JAN 6 1964

COUNTY SURVEYOR
DOUGLAS COUNTY, ORE.