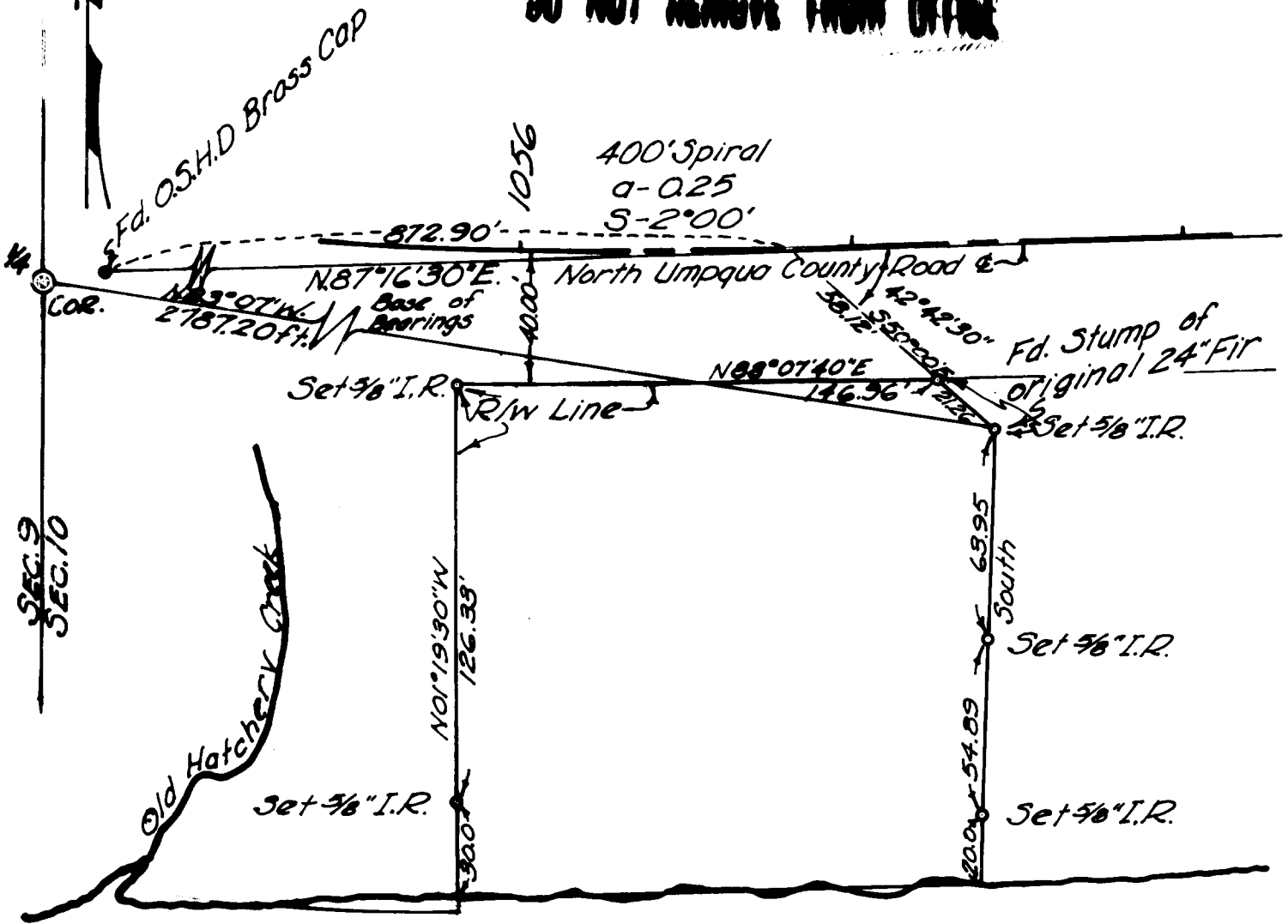


SECTION 10, T.26S., R.3W.W.M.

COUNTY SURVEYORS FILE DATA
DO NOT REMOVE FROM OFFICE



SURVEY TO ESTABLISH PROPERTY LINES
FOR LOUIS BASSETT

NOVEMBER 11, 1963

SCALE 1"=50'

FILED *L.L.*
RECEIVED

DEC 13 1963

COUNTY SURVEYOR
DOUGLAS COUNTY, ORE.

REGISTERED
OREGON
LAND SURVEYOR

Glenn S. Baughman

JULY 14, 1961
GLENN S. BAUGHMAN
536