

**COUNTY SURVEYORS FILE DATA
DO NOT REMOVE FROM OFFICE**

**MAP OF DOUGLAS COMMUNITY HOSPITAL, INC.
SANITARY SEWER EASEMENT ACROSS THE PROPERTY OF
DOUGLAS COUNTY IN SEC. 13, T. 27 S., R. 6 W. W. M.
DOUGLAS COUNTY, OREGON.**

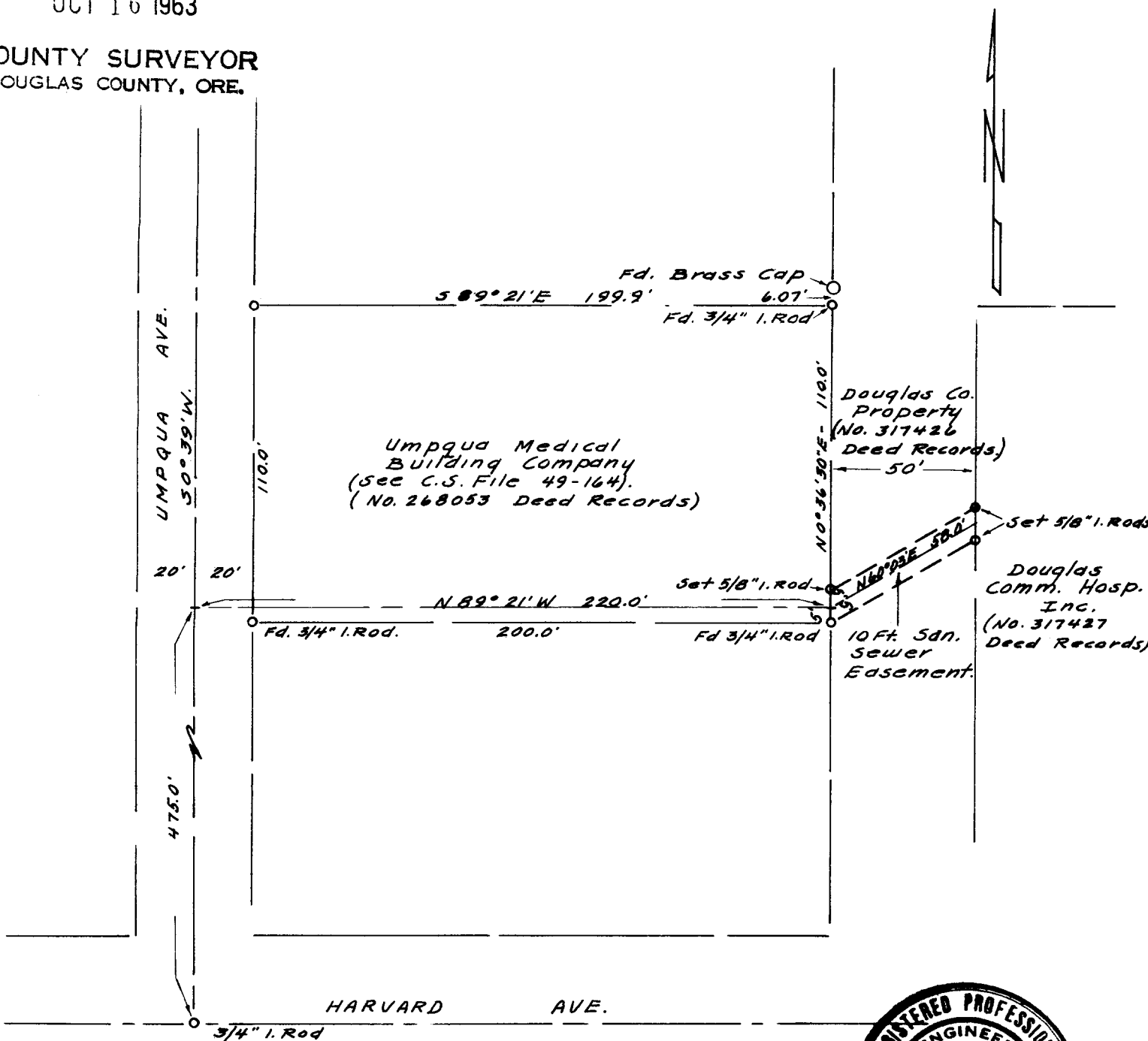
ENGINEER - W. S. BARNES

SEPT. 1963
SCALE 1" = 50'

FILED *L.L.*
RECEIVED

OCT 16 1963

COUNTY SURVEYOR
DOUGLAS COUNTY, ORE.



Note: Bearings Based on Map - C.S. File 49-164.