

COUNTY SURVEYORS FILE DATA
DO NOT REMOVE FROM OFFICE

MAP OF DOUGLAS COMMUNITY HOSPITAL, INC.
SANITARY SEWER EASEMENT ACROSS THE PROPERTY OF
UMPQUA MEDICAL BLD'G. CO. IN SEC. 13, T. 27 S., R. 6 W. W.M.
DOUGLAS COUNTY, OREGON

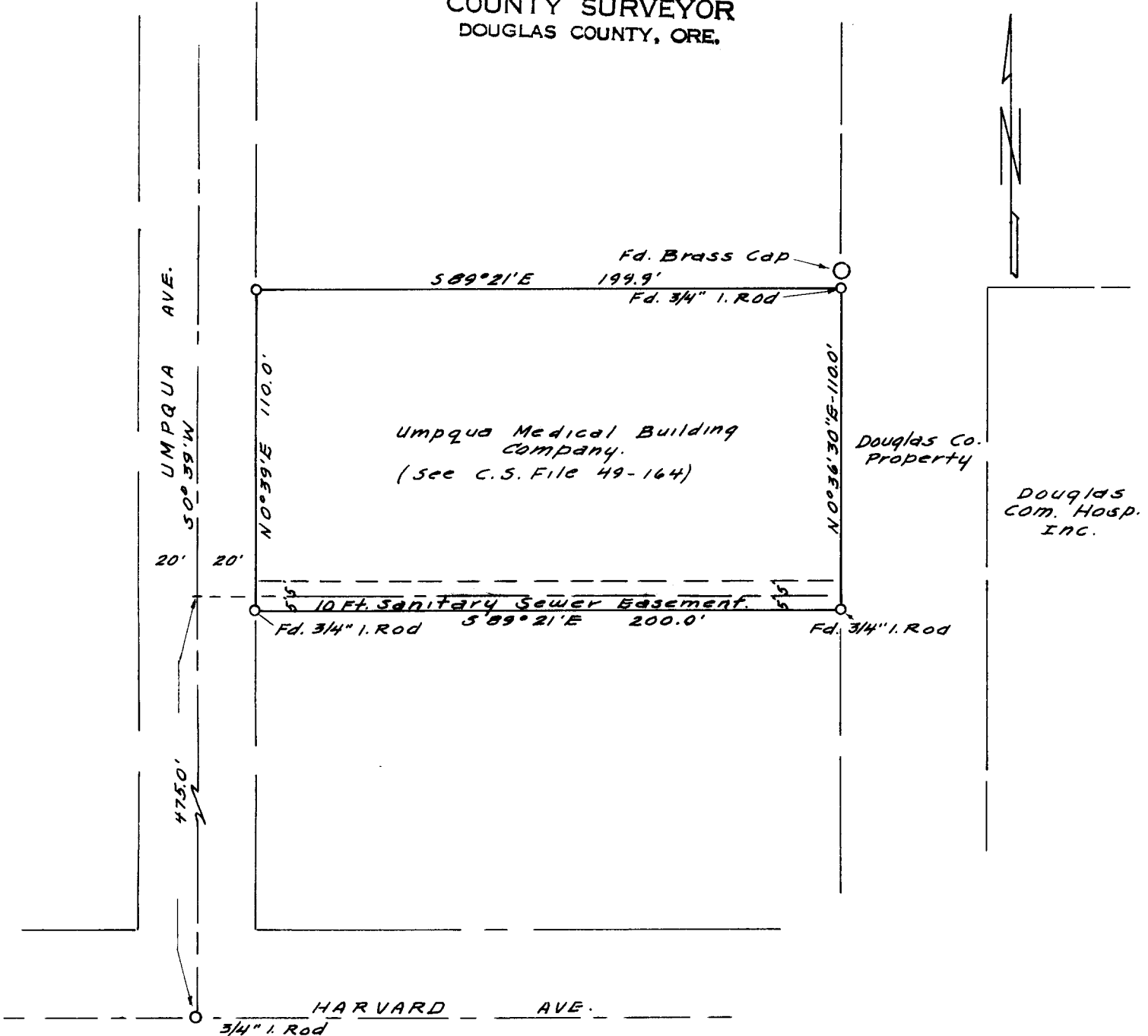
ENGINEER - W. S. BARNES

FILED *L.L.*
RECEIVED

SEPT. 1963
SCALE 1" = 50'

OCT 16 1963

COUNTY SURVEYOR
DOUGLAS COUNTY, ORE.



Note: Bearings Based on Map - C.S. File 49-164.



C.S. File No. 51/268-2