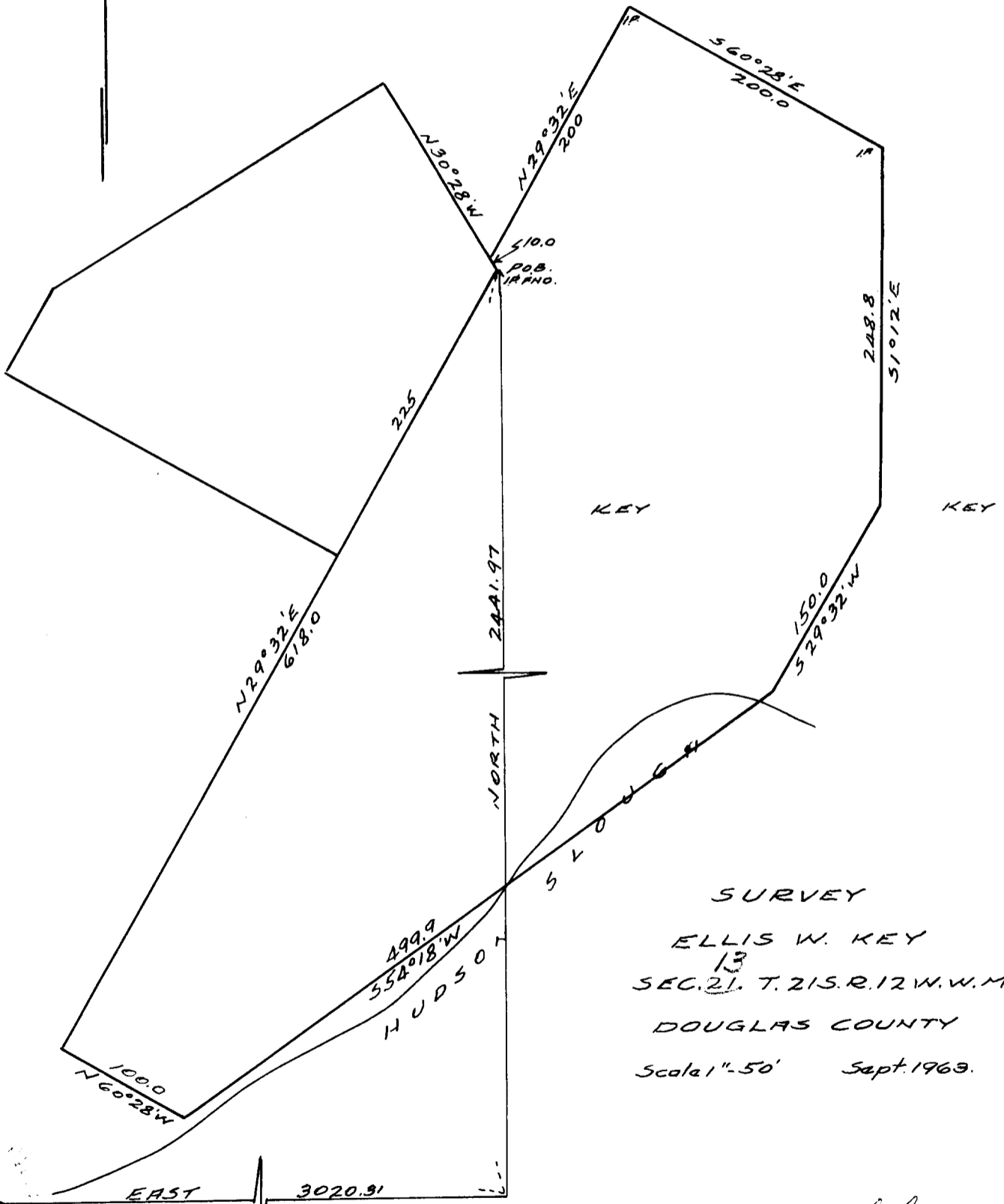


R. 12 W.



T.
21
S.



SURVEY
 ELLIS W. KEY
 13
 SEC. 21, T. 21 S. R. 12 W. W.M.
 DOUGLAS COUNTY
 Scale 1" = 50' Sept. 1963.

14 13
 20 21
 29 28
 23 24
 11/15/02
 082



4/11/71
 SURVEY IN WRONG SECTION
 SEE HUDSON'S SURVEY M 28-30

FILED *L.L.*
 RECEIVED

OCT 4 1963

COUNTY SURVEYOR
 DOUGLAS COUNTY, ORE.

File No. 51/267-4P