

COUNTY SURVEYORS FILE DATA
DO NOT REMOVE FROM OFFICE

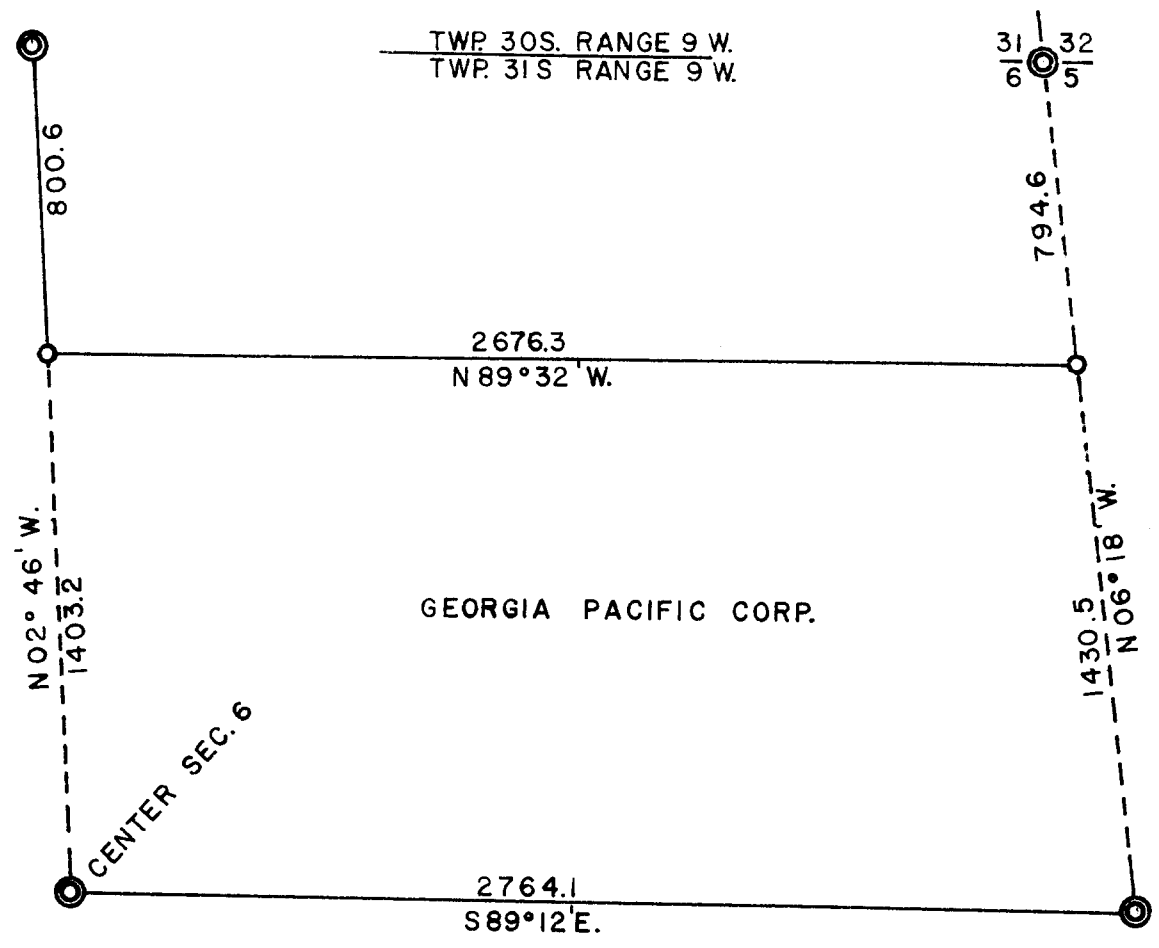
PARTIAL SUBDIVISION OF THE
NE 1/4 SECTION 6 TWP. 31 SOUTH
RANGE 9 WEST, W.M.

FOR
GEORGIA PACIFIC CORP.

DOUGLAS COUNTY, ORE.

SCALE: 1 INCH = 500 FEET AUG. 12 1963

- ⊙ CORNERS FOUND
- CORNERS SET THIS SURVEY
- LINE RUN & BLAZED
- - - - LINE RUN



FILED *LL*
RECEIVED

SEP 16 1963

REGISTERED
OREGON
LAND SURVEYOR

Forest J. LaFlamme
MAY 8, 1959
FOREST J. LaFLAMME
473

COUNTY SURVEYOR
DOUGLAS COUNTY, ORE.

S. File No. *51/265 A*

PARTIAL SUBDIVISION OF THE NE $\frac{1}{4}$ OF SECTION 6, TOWNSHIP 31 SOUTH, RANGE 9 WEST, WILLAMETTE MERIDIAN

This survey was made to establish the property lines of Georgia-Pacific Corporation in the NE $\frac{1}{4}$ of Section 6.

I begin at the center of Section 6 which is a 4 inch square post established by C. S. Lehmanowsky in 1956. The 30 inch Fir B.T. S72 3/4°W, 26.7 feet is now an uproot.

I scribe two new B.T.s for the center of Section 6.

Douglas Fir, 46 inches, N36°W, 74.1 feet
"1/4 S 6 B.T."

Douglas Fir, 36 inches, S71°E, 59.6 feet
"1/4 S6 B.T. 473"



From the center of Section 6 I run S89° 12'E, 2764.1 feet to the 1/4 Corner between Sections 5 and 6 which has the original 18 inch Fir B.T., N32°W 41.5 feet, now a snag. The Fir for the Corner and other original B.T. are now uproots.

From the original B.T. standing in place, I set a 1 1/4 inch pipe for the 1/4 Corner and scribe.

Douglas Fir, 22 inches, S27°E, 57.4 feet
"1/4 S5 B.T."



From this 1/4 Corner I now run N06° 18'W, 2225.1 feet to the Corner of Sections 31 and 32, Township 30 South, Range 9 West and Sections 5 and 6, Township 31 South, Range 9 West, which is the original stone. The original Fir, 30 inches, N44°E and the Fir, 30 inches, S22°E are both snags. The original Fir, 34 inches, S21 1/2°W is now a short stub badly decayed. There is no evidence of the original 8 inch Fir. I drive a 1 1/4 inch pipe at the south side of the original stone and scribe.

Douglas Fir, 8 inches, S60°W, 34.4 feet
"S6 B.T. 473"

Oak, 10 inches, S51°E, 20.4 feet
"S 5 BT"



I now return to a point on the true line and the proportionate distance between the East 1/4 Corner and the Northeast Corner of Section 6 which is N06° 18'W, 1430.5 feet from the East 1/4 Corner. This being the position for the North 1/16 between Sections 5 and 6, I set a 4 inch square post and scribe.

(Next page, please)

PARTIAL SUBDIVISION OF THE NE¹/₄ OF SECTION 6, TOWNSHIP 31 SOUTH, RANGE 9 WEST, WILLAMETTE MERIDIAN (Continued)

Douglas Fir, 34 inches, N06¹/₂°E, 15.9 feet
"1/16 S5 B.T."

Douglas Fir, 30 inches, S65°W, 13.0 feet
"1/16 S6 B.T. 473"

I now return to the center of Section 6 and run N02° 46'W, 2203.8 feet to the North ^{27 - 303}/_{6 - 315} Corner of Section 6 which is the original stone with the chisel marks faintly showing. The original Fir, 15 inches, S40 3/4°E is now 30 inches in diameter and is plainly scribed. The original Hemlock B.T. is gone. I scribe.

White Cedar, 9 inches, N22°W, 26.3 feet
"1/4 S31 B.T." ⊕

I now return to a point on the true line and the proportionate distance between the center and the North ¹/₄ Corner of Section 6 which is N02° 46'W, 1403.2 feet from the center. This being the position for the Center North 1/16 of Section 6, I set a 4" square post and scribe.

White Cedar, 9 inches, S36¹/₂°E, 24.6 feet
"1/16 S6 B.T."

Red Cedar, 34 inches, S89°W, 58.8 feet
"1/16 S B.T. 473"

August 12, 1963.

Forest LaFlamme
Forest LaFlamme
Surveyor, Oregon 473

FILED *LL*
RECEIVED

SEP 16 1963

COUNTY SURVEYOR
DOUGLAS COUNTY, ORE.