

T. 21 S. R. 12. W. SE, SW 1/4 Sec 35

SURVEY OF NORTH 50 FT. AND WEST 85 FT. OF LOTS 5 & 4,
BLOCK 104, AMENDED PLAT OF RAILROAD ADDITION TO
REEDSPORT, DOUGLAS COUNTY, OREGON

for
RALPH PAULL

COUNTY SURVEYORS FILE DATA
DO NOT REMOVE FROM OFFICE

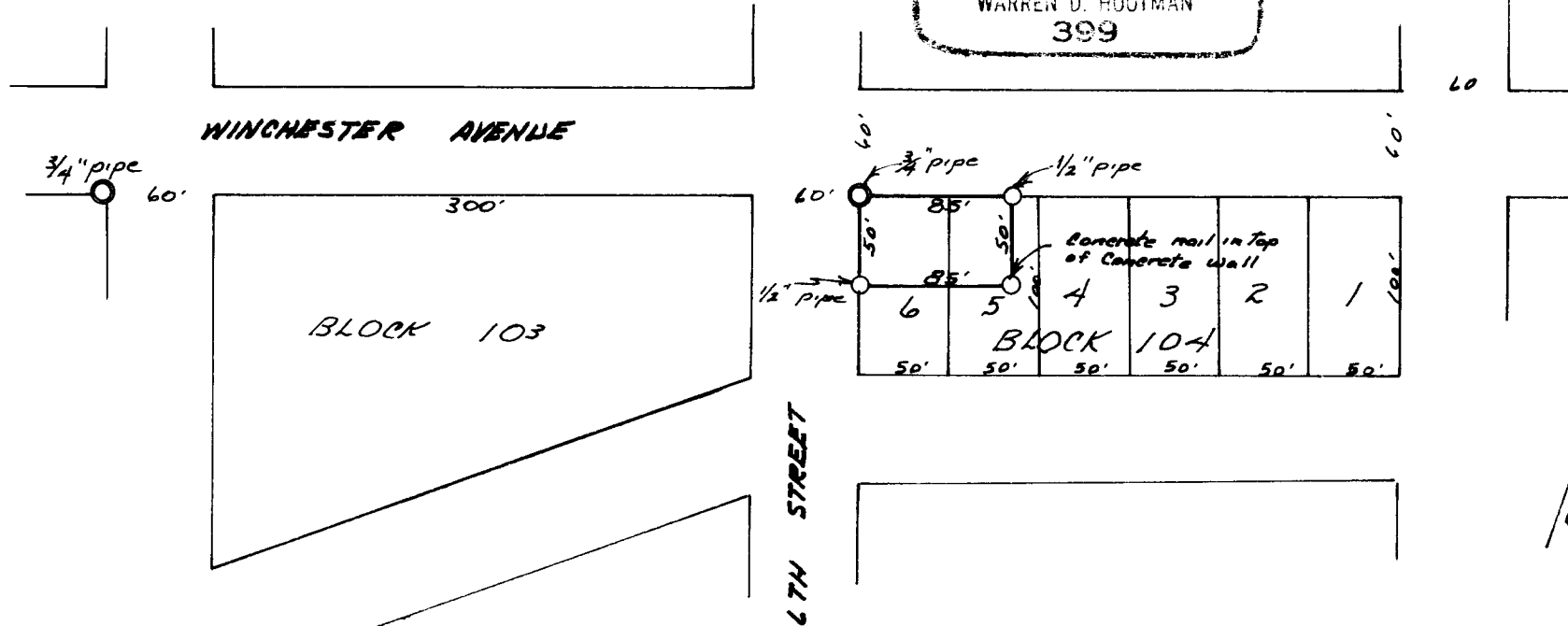
Corners found: ○
Corners set: ○
Scale: 1" = 100'

October 26, 1963

REGISTERED
OREGON
LAND SURVEYOR

Warren D. Hootman

MAY 10, 1937
WARREN D. HOOTMAN
399



Based on Bearings, Nails, Existing monuments

FILED
RECEIVED

NOV 5 1963

COUNTY SURVEYOR
DOUGLAS COUNTY, ORE.