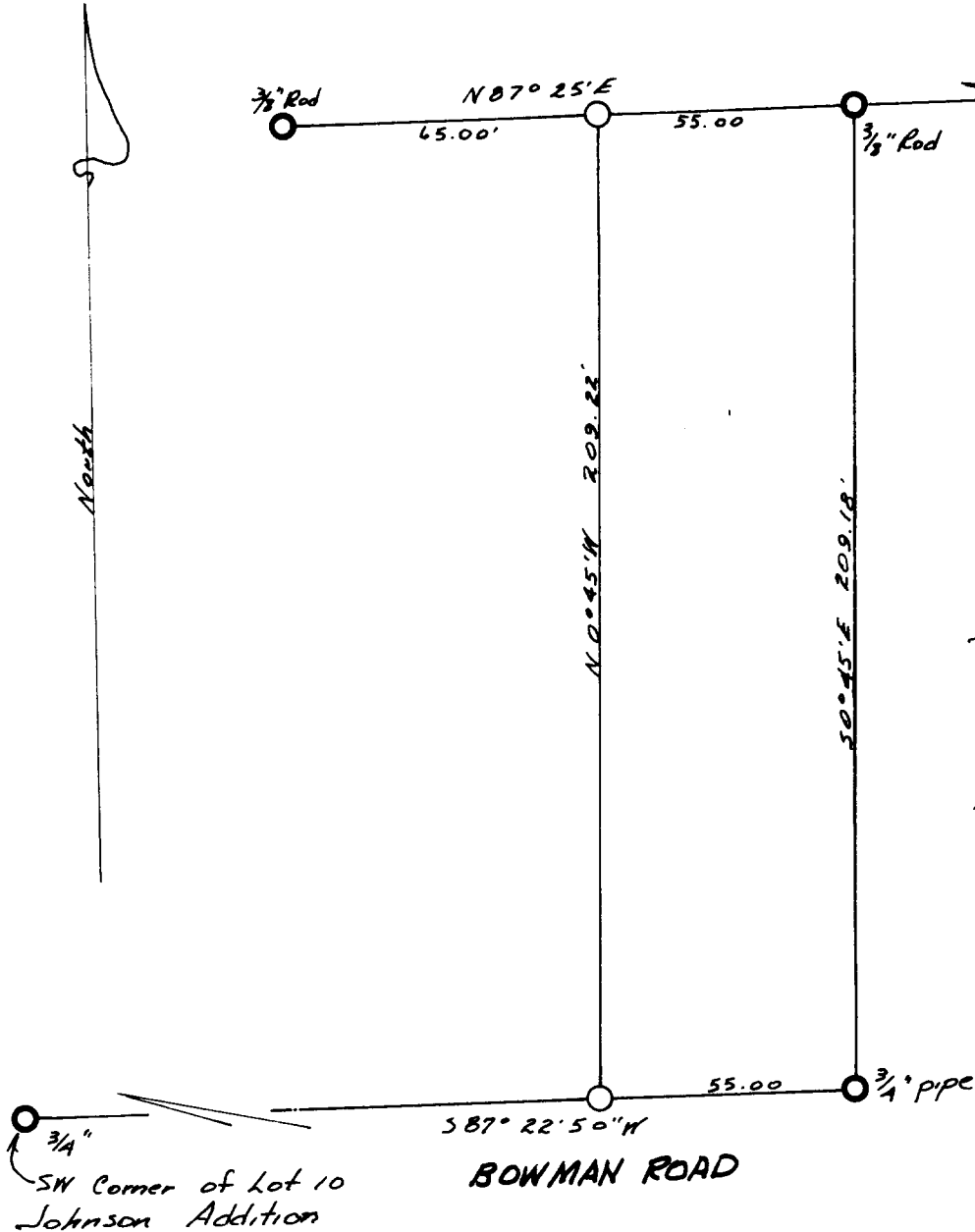


COUNTY SURVEYORS FILE DATA  
DO NOT REMOVE FROM OFFICE

FILED *LL*  
RECEIVED

SEP 12 1963

COUNTY SURVEYOR  
DOUGLAS COUNTY, ORE.



SURVEY OF A PORTION OF THE SE 1/4  
OF SECTION 4, T. 22 S., R. 12 W., W. M.,  
DOUGLAS COUNTY, ORE.

for  
B. L. SMITH

Corners found: ○  
Corners set: ○  
Scale: 1" = 40'

August 1, 1963

Basis for bearing: Monuments along Bowman Road,  
Bearing of S 87° 22' 50" W as called for in deed.

REGISTERED  
OREGON  
LAND SURVEYOR

*Warren D. Hootman*  
MAY 10, 1957  
WARREN D. HOOTMAN  
393