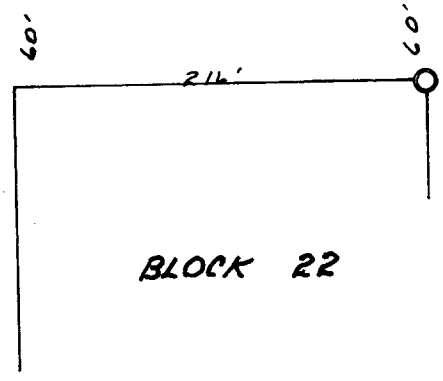
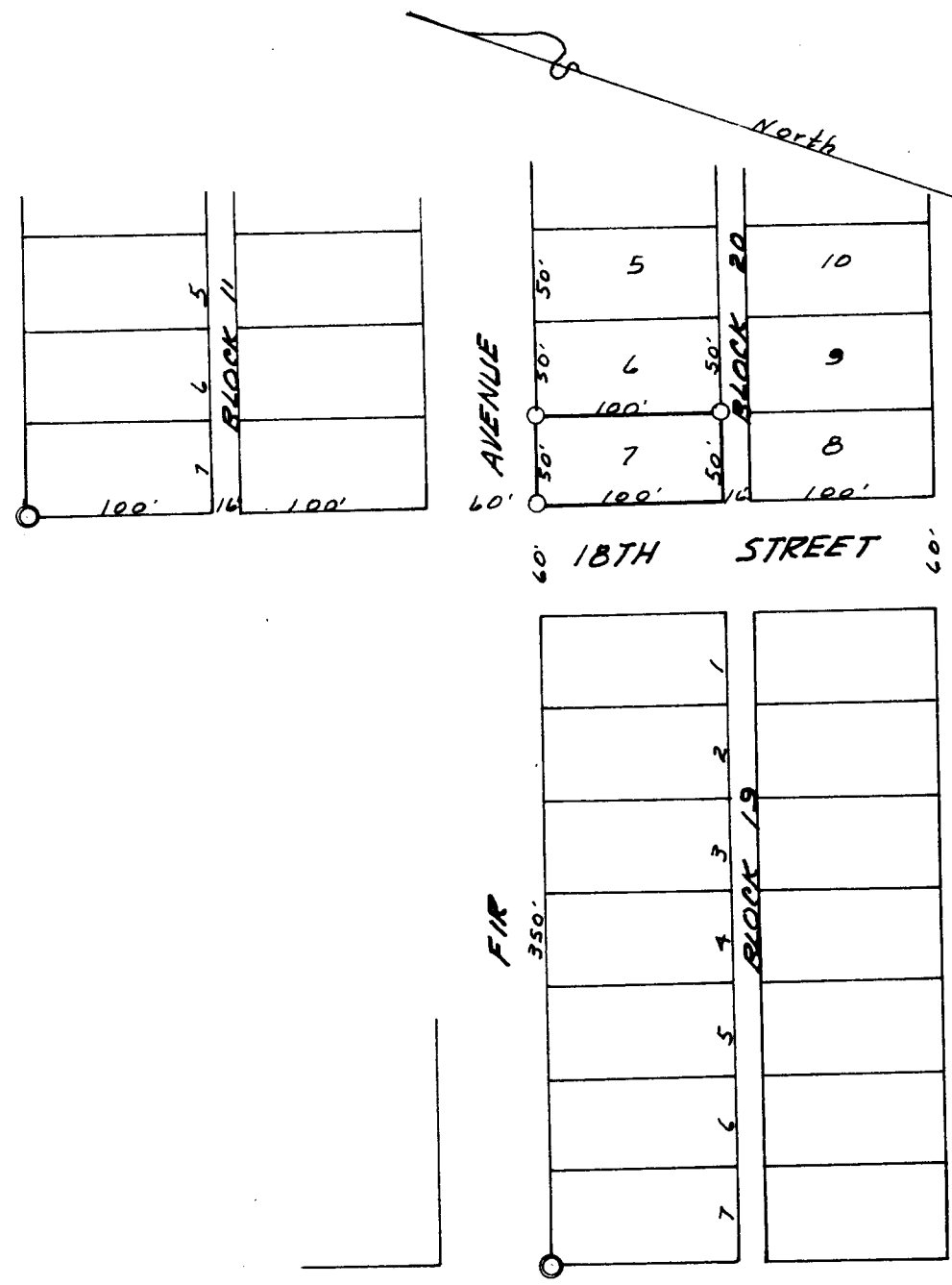


COUNTY SURVEYORS FILE DATA
DO NOT REMOVE FROM OFFICE

7. 22 S. R. 12 W. NE 1/4 Sec 3
 SURVEY OF LOT 7, BLOCK 20,
 REEDSPORT ADDITION TO REEDSPORT
 DOUGLAS COUNTY, OREGON
 for
 RALPH PAULL

Corners found: \odot 3/4" pipe
 Corners set: \circ 3/4" pipe
 Scale 1" = 100'

September 10, 1963



REGISTERED
OREGON
 LAND SURVEYOR
Warren D. Hootman
 MAY 10, 1967
 WARREN D. HOOTMAN
 399

FILED *L.L.*
 RECEIVED

SEP 12 1963

COUNTY SURVEYOR
 DOUGLAS COUNTY, ORE.