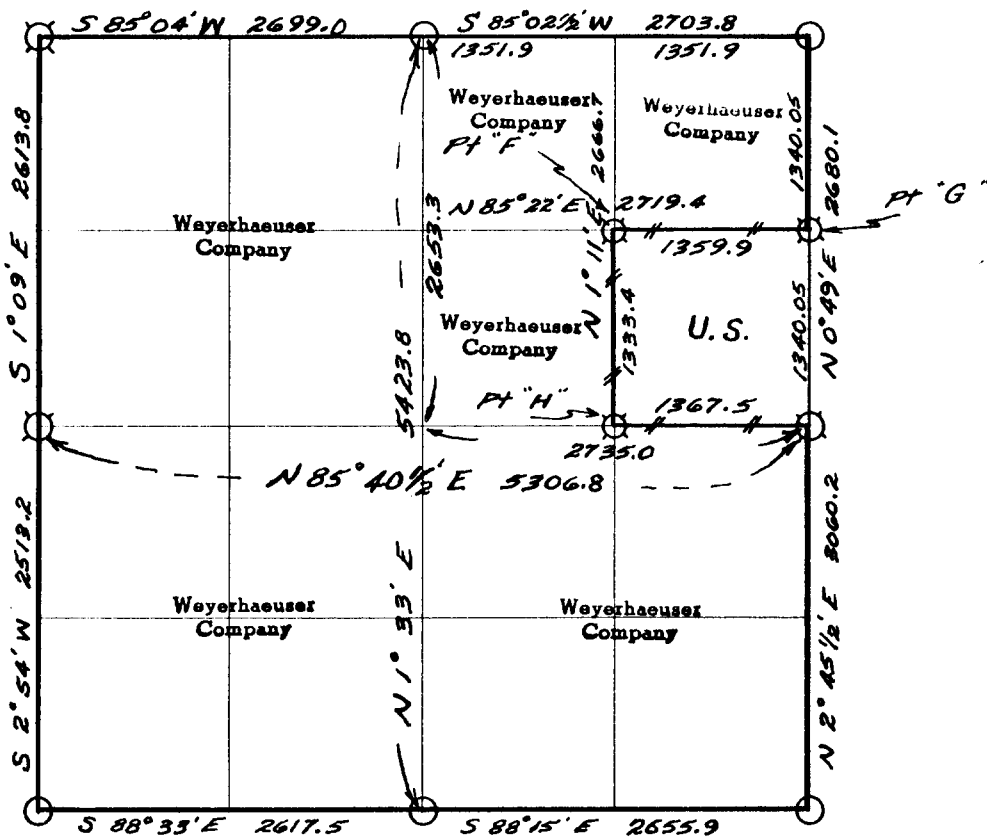


Weyerhaeuser Company

Section 34 Township 25 S Range 3 W



— # — # — Line marked by notch cut in blaze

- Known corner
- ⊠ Referenced corner

Transit Survey. Bearings based on assumed North Meridian from magnetic North, using Magnetic declination of 21° East.

This survey was made for Weyerhaeuser Company and Eugene Veneer Co., by William S. Barnes, Oregon Licensed Engineer, Reg. No. 2128

Helpers: William L. Wilt & Jim Brown

FILED
RECEIVED

AUG 23 1963



COUNTY SURVEYOR
DOUGLAS COUNTY, ORE.

Dates of survey May & June 1963

Date filed for record & where July 1963

Distribution

Douglas County Surveyor's Office

- W.Co.-Spfld.-Land Dept. File.
- W.Co.-Spfld.-Survey File
- Eugene Veneer Co
- B.L.M.-Roseburg

Reported June 19 63

By William S. Barnes

$\frac{34}{3}$

$\frac{1}{4}$ Corner common to Sections 34-25S-3W and
3-26S-3W

GLO Survey Record, Dependent Resurvey approved 1/7/46

Brass Cap

Found

$\frac{34}{3} | \frac{35}{2}$

Section Corner common to Sections 34 and 35-25S-3W and
2 and 3-26S-3W

GLO Survey Record, Dependent Resurvey approved 1/7/46

Brass Cap

Found

NE 1/16

Corner for Section 34-25S-3W = Point "F"

Set 1" iron pipe for corner by double proportionate method

Referenced by W. Wilt (Weyerhaeuser Method with disc. #2128)
Declination 20°

| | | |
|-------------|---------|-------|
| 26" R Cedar | S 89° W | 25.8' |
| 34" Fir | N 30° W | 30.5' |

CE 1/16

Corner for Section 34-25S-3W = Point "H"

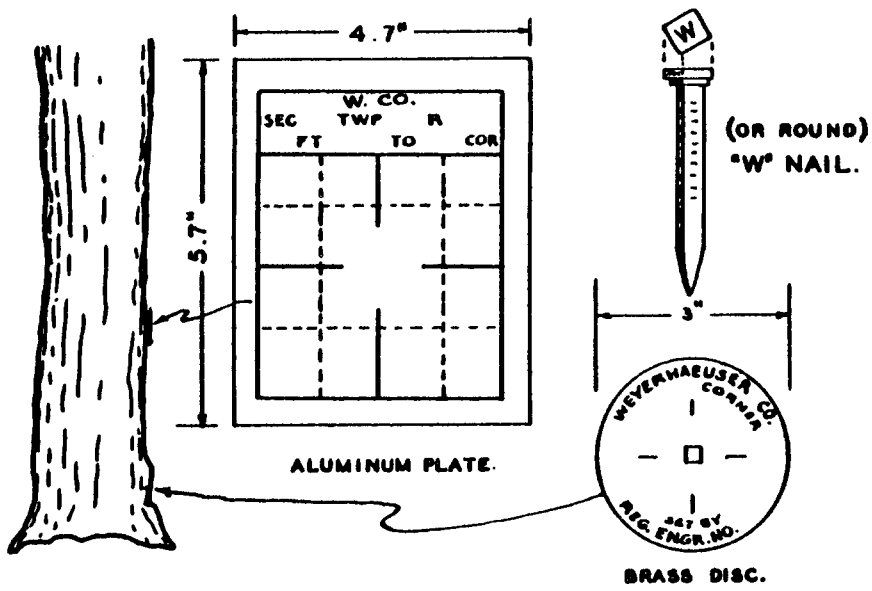
Set 1" iron pipe for corner by single proportionate method

Referenced by W. Wilt (Weyerhaeuser Method with disc. #2128)

| | | |
|-------------|---------|-------|
| 28" R Cedar | S 55° W | 19.5' |
| 10" R Cedar | N 35° W | 26.0' |

WEYERHAEUSER COMPANY CORNER REFERENCE METHOD

A "W" nail driven thru the hole in a brass disc, into a notch cut low on a tree, stamped with the Oregon registered land surveyor or professional engineer registration number. An embossed aluminum plate nailed head high on same tree with 8d aluminum nails, with distance and bearing from the "W" nail to the corner stamped on it.



51/261d

FILED
RECEIVED

AUG 23 1963

COUNTY SURVEYOR
DOUGLAS COUNTY, ORE.

C. S. File No. 51/26