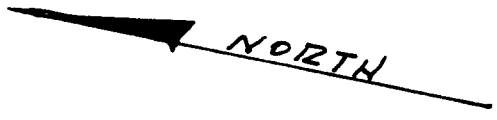
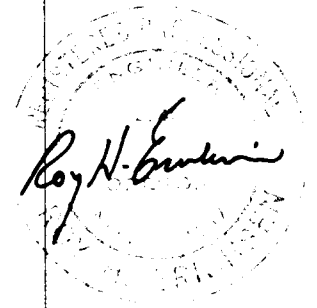
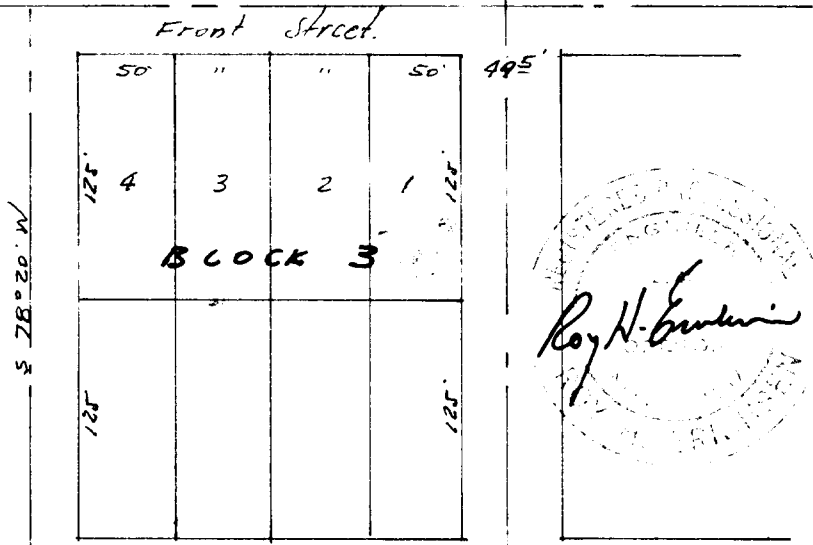
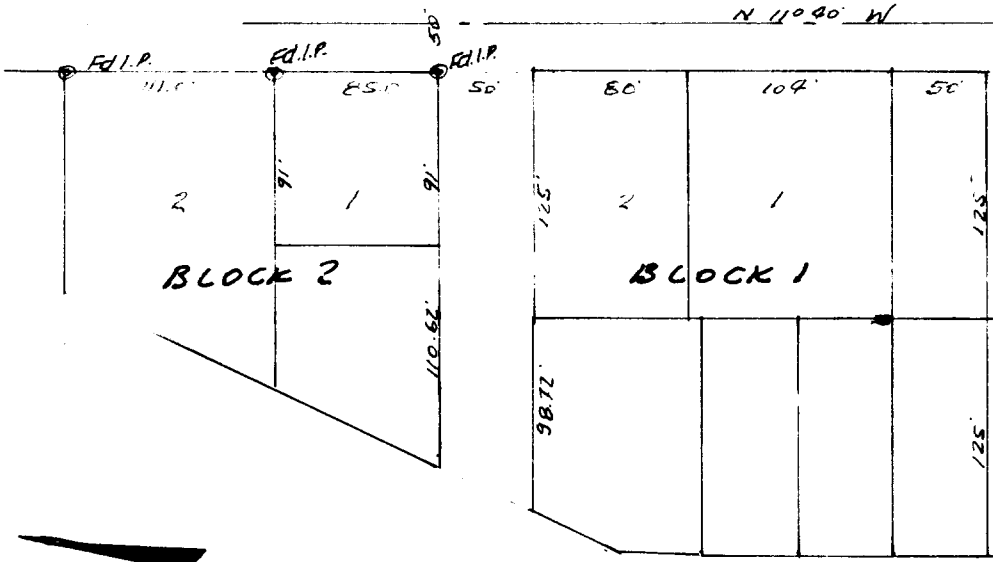
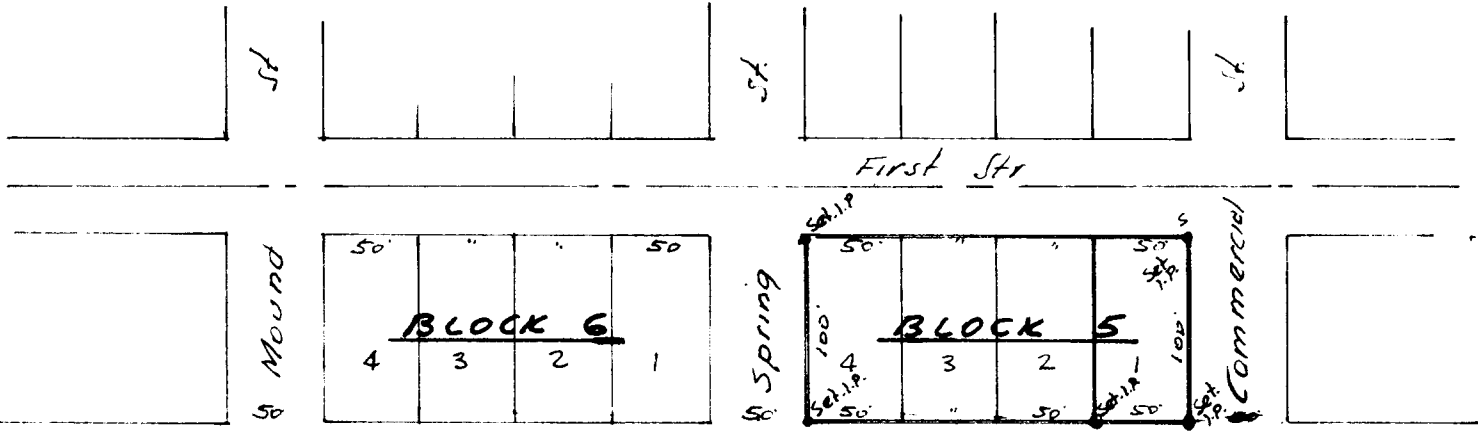


FILED
RECEIVED

OCT 4 1963

COUNTY SURVEYOR
DOUGLAS COUNTY, ORE.



U.S. HWY #101

Property Survey
 Lot 1 Blocks 5 & Lots 2, 3, 4 Blocks
 Town of Gardiner
 Douglas County, Oregon
 Scale: 1" = 100' 7-21-63
 FOR BYRON SERFLING

COUNTY SURVEYORS FILE DATA
 DO NOT REMOVE FROM OFFICE