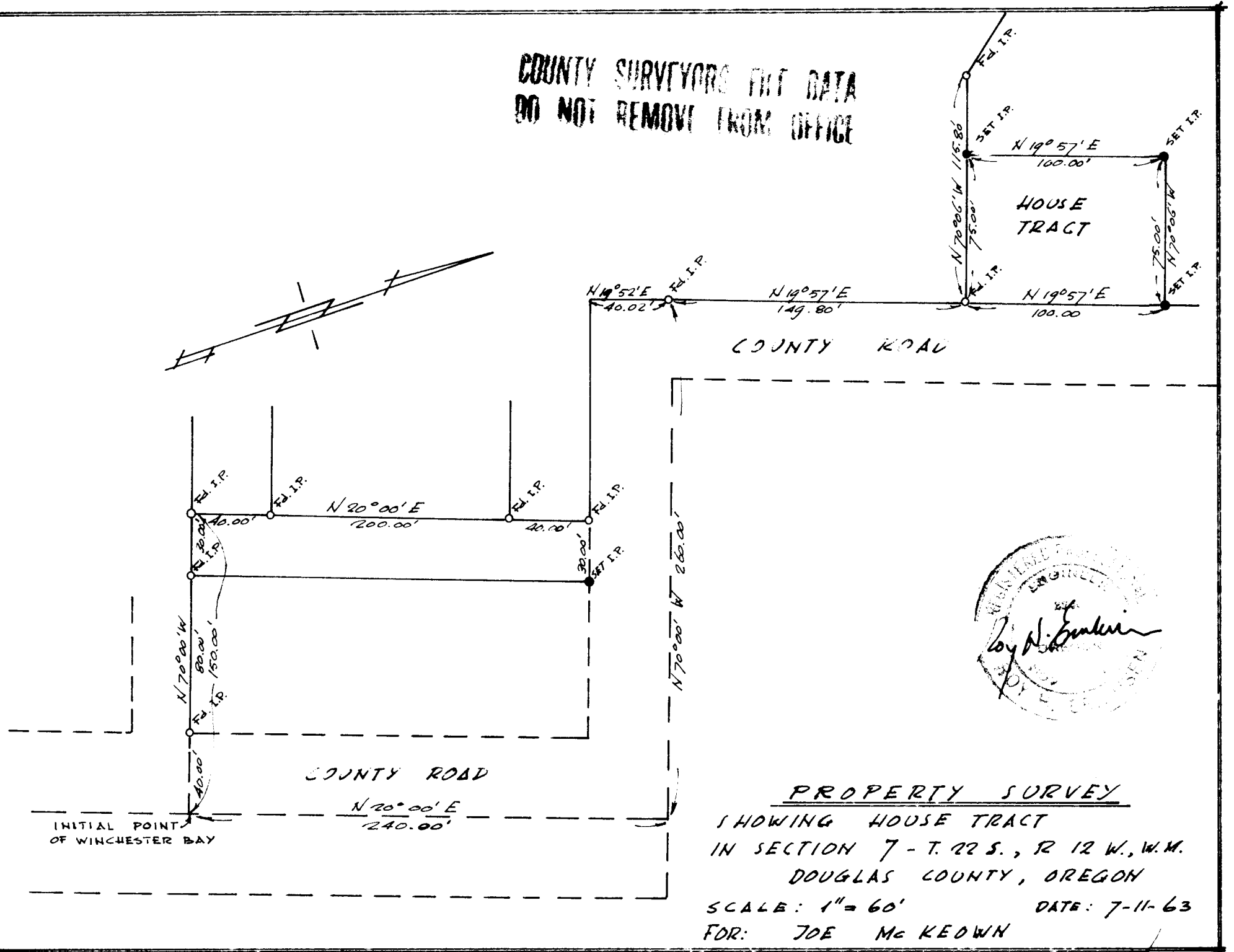
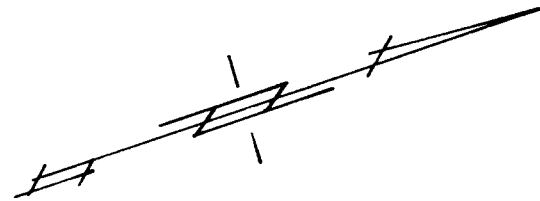


FILED  
RECEIVED

COUNTY SURVEYOR  
DOUGLAS COUNTY, ORE.

COUNTY SURVEYORS FILE DATA  
DO NOT REMOVE FROM OFFICE



PROPERTY SURVEY  
SHOWING HOUSE TRACT  
IN SECTION 7 - T. 22 S., R. 12 W., W.M.  
DOUGLAS COUNTY, OREGON  
SCALE: 1" = 60'      DATE: 7-11-63  
FOR: JOE MCKEOWN

51/256-5