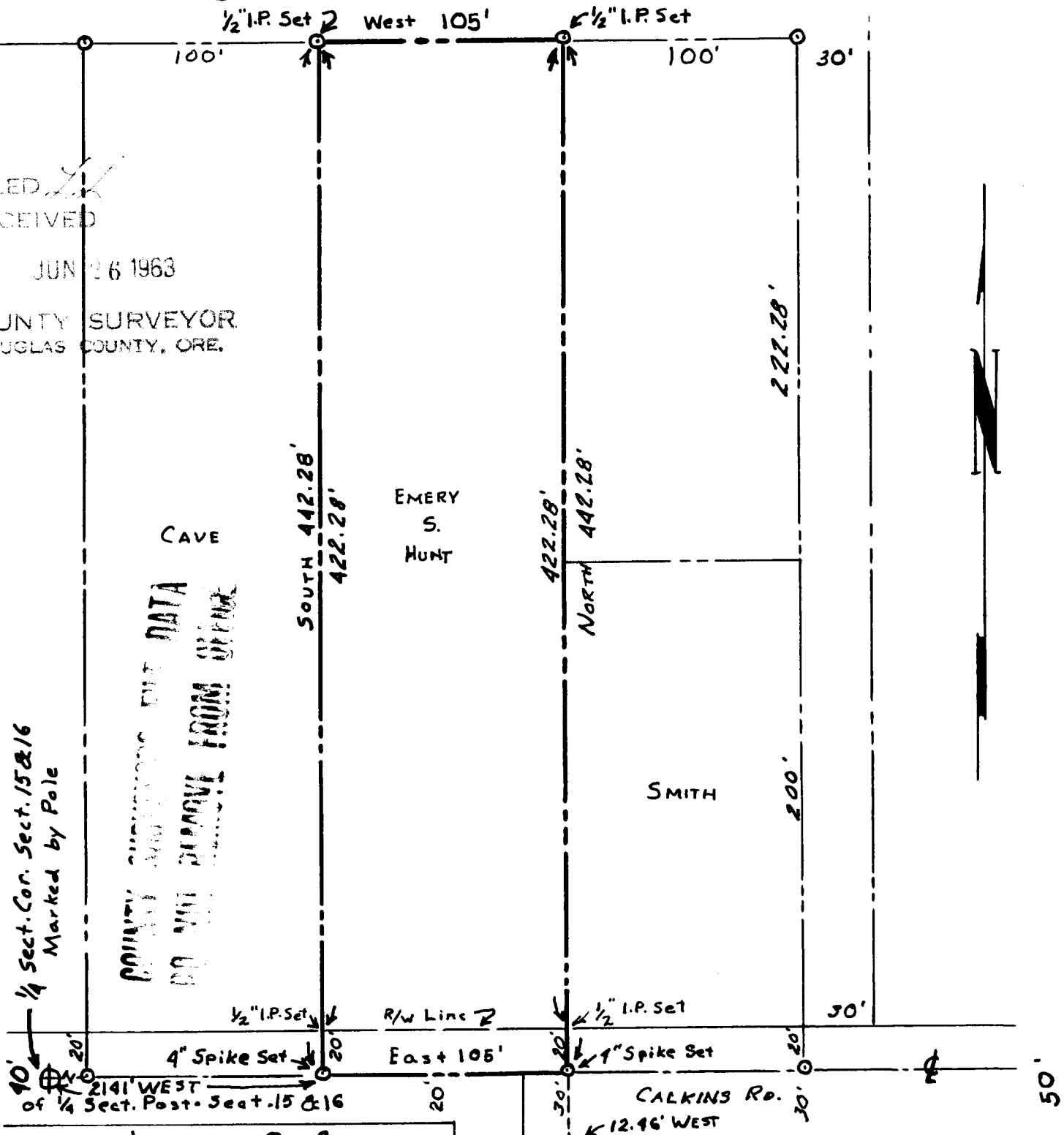


EMERY S. HUNT PARCEL IN SECTION 15-T27S-R6W.W.M. ON CALKINS ROAD-ROSEBURG, ORE.

FILED
RECEIVED

JUN 26 1963

COUNTY SURVEYOR
DOUGLAS COUNTY, ORE.



COUNTY SURVEYOR'S DATA
 DO NOT REMOVE FROM OFFICE

1/4 Sect. Cor. Sect. 15 & 16
 Marked by Pole

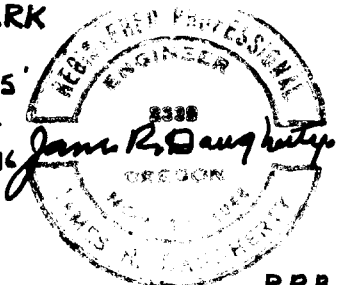
NOTE: BEARING ON CALKINS ROAD GIVEN AS N89°58'30"E ON C.S. FILE 46/136 MAP FILE M8-20

6'0" CLOAKE ST.

2" GALV. IRON PIPE
Initial Pt. of PARK HAVEN
N89°14'W 2258.65'
to 1/4 Sect. Post. of Sect. 15 & 16

SCALE 1"=60'
JUNE 4, 1963

JAMES R. DAUGHERTY
CIVIL-SANITARY ENGINEER
WINSTON, OREGON



P.R.B.