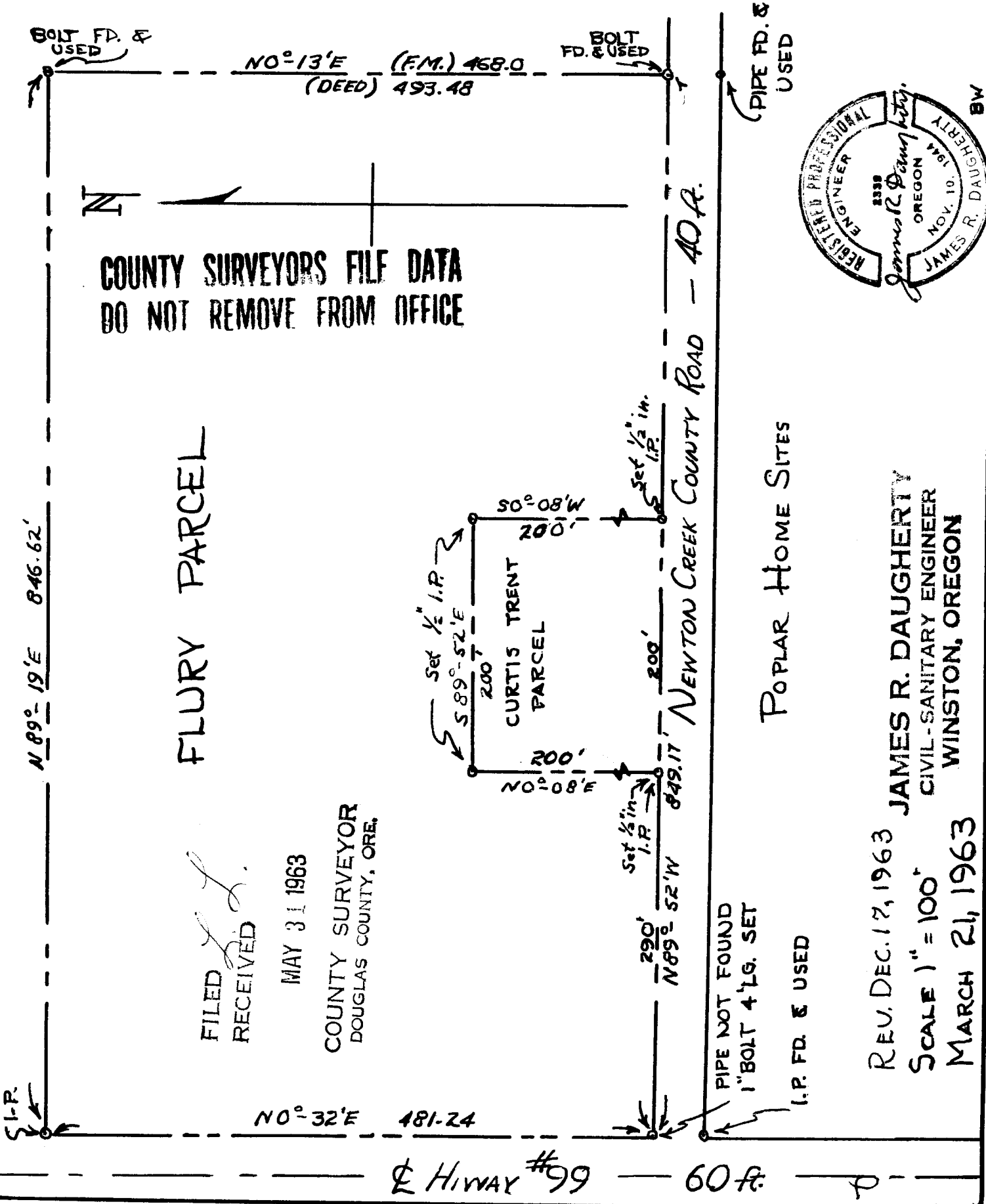


FLURY SUPPLY CO. N. ROSEBURG, OREG.

SECT. 1 • T275 • R6W • W.M.

R.O.C. Tr. 1, Pl. 3



COUNTY SURVEYORS FILE DATA
DO NOT REMOVE FROM OFFICE

FLURY PARCEL

CURTIS TRENT
PARCEL

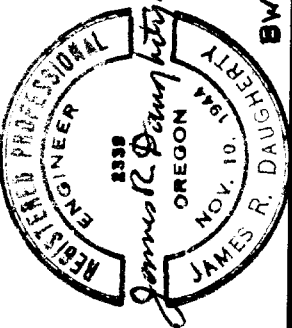
NEWTON CREEK COUNTY ROAD - 40 ft.

POPLAR HOME SITES

FILED
RECEIVED

MAY 31 1963

COUNTY SURVEYOR
DOUGLAS COUNTY, ORE.



REV. DEC. 17, 1963
SCALE 1" = 100'
MARCH 21, 1963

JAMES R. DAUGHERTY
CIVIL-SANITARY ENGINEER
WINSTON, OREGON