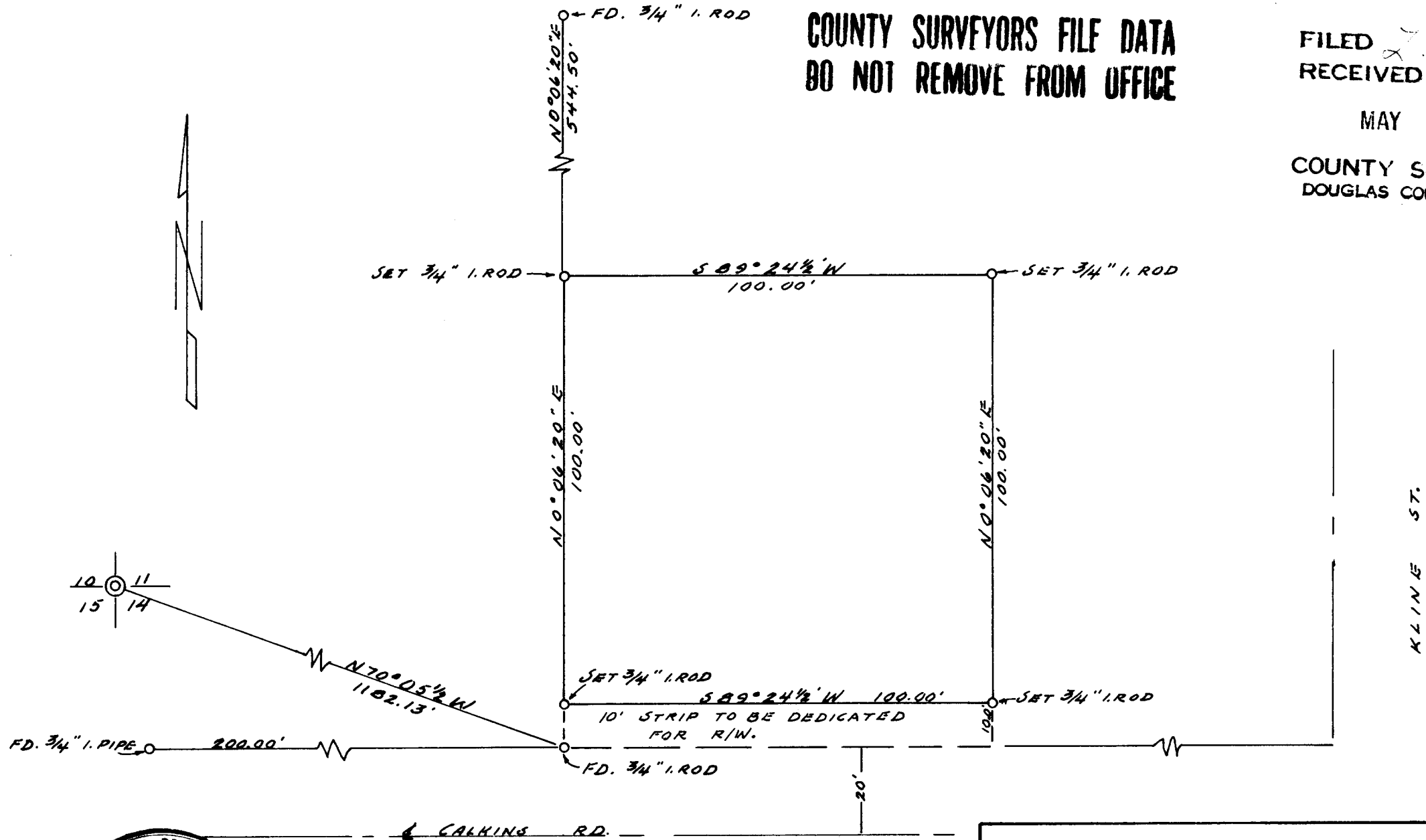


COUNTY SURVEYORS FILE DATA
DO NOT REMOVE FROM OFFICE

FILED *L.L.*
RECEIVED

MAY 7 1963

COUNTY SURVEYOR
DOUGLAS COUNTY, ORE.



NOTE: BASE OF BEARINGS - SEE
C.S. FILE 52/75 M20-34

SURVEY FOR DEED DESCRIPTION
SECTION 14, T27 S, R6 W. W.M.
SURVEYED FOR - W. ULRICH
SURVEYED BY - W. S. BARNES
APRIL 1963
SCALE 1" = 30'