

COUNTY SURVEYING OFF DATA
DO NOT REMOVE FROM OFFICE

FILED *L.L.*
RECEIVED

FEB 27 1963

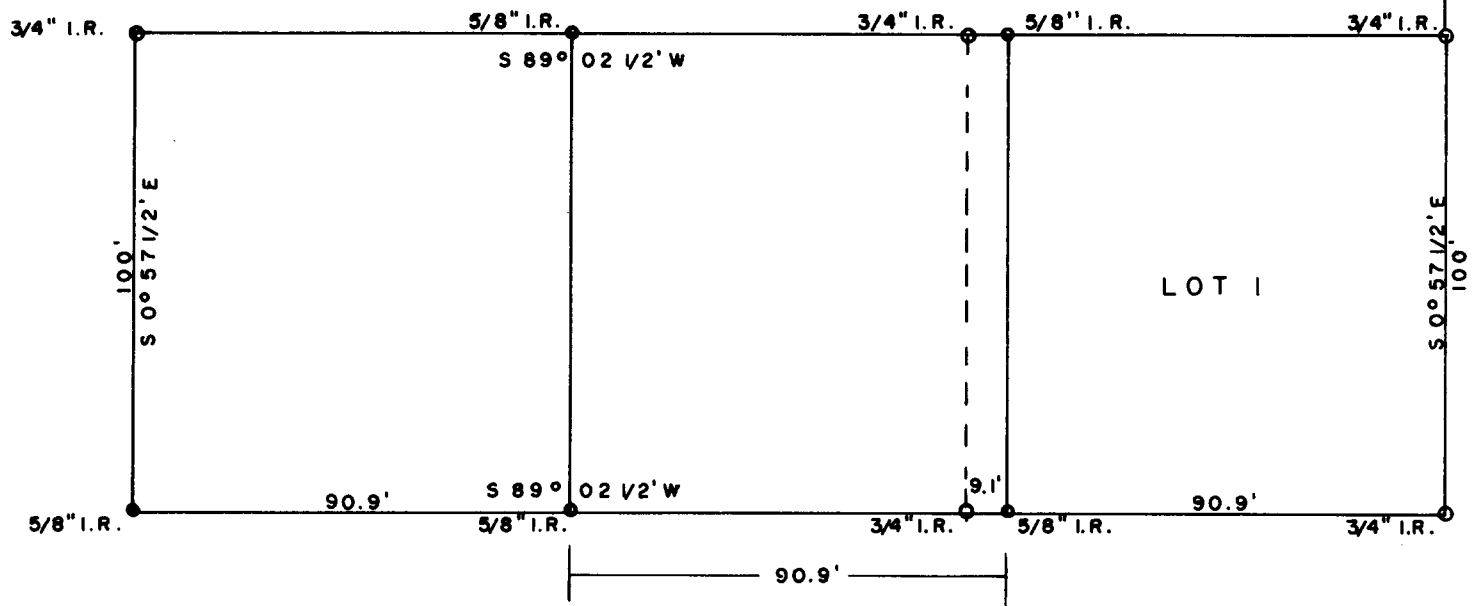
COUNTY SURVEYOR
DOUGLAS COUNTY, ORE.

MAP OF SURVEY TO ESTABLISH PROPERTY CORNERS,
INCLUDING LOT 1, OF FIRST ADDITION TO LYNWOOD TERRACE
AND ADJOINING PROPERTY ON WEST SIDE OF LOT 1,
ROSEBURG, DOUGLAS COUNTY, OREGON.

SURVEYED FOR- ROBT. SMITH & FRANK CARL
SURVEYED BY- W.S. BARNES

FEB. 1963
SCALE - 1" = 40'

C. S. File No. *51/251-1P*



LYNWOOD STREET

STREET R/W

20.0' R/W

