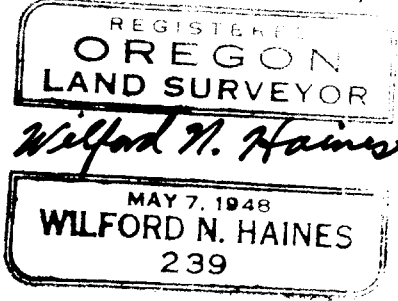


DO NOT REMOVE FROM OFFICE

SURVEY TO DETERMINE LINES & CORNERS,
SECT. 3, T22S, R. 5W. W. M.
for
WALLACE BEAN. DRAIN, ORE.

SCALE: 1" = 200'

Nov. 1962



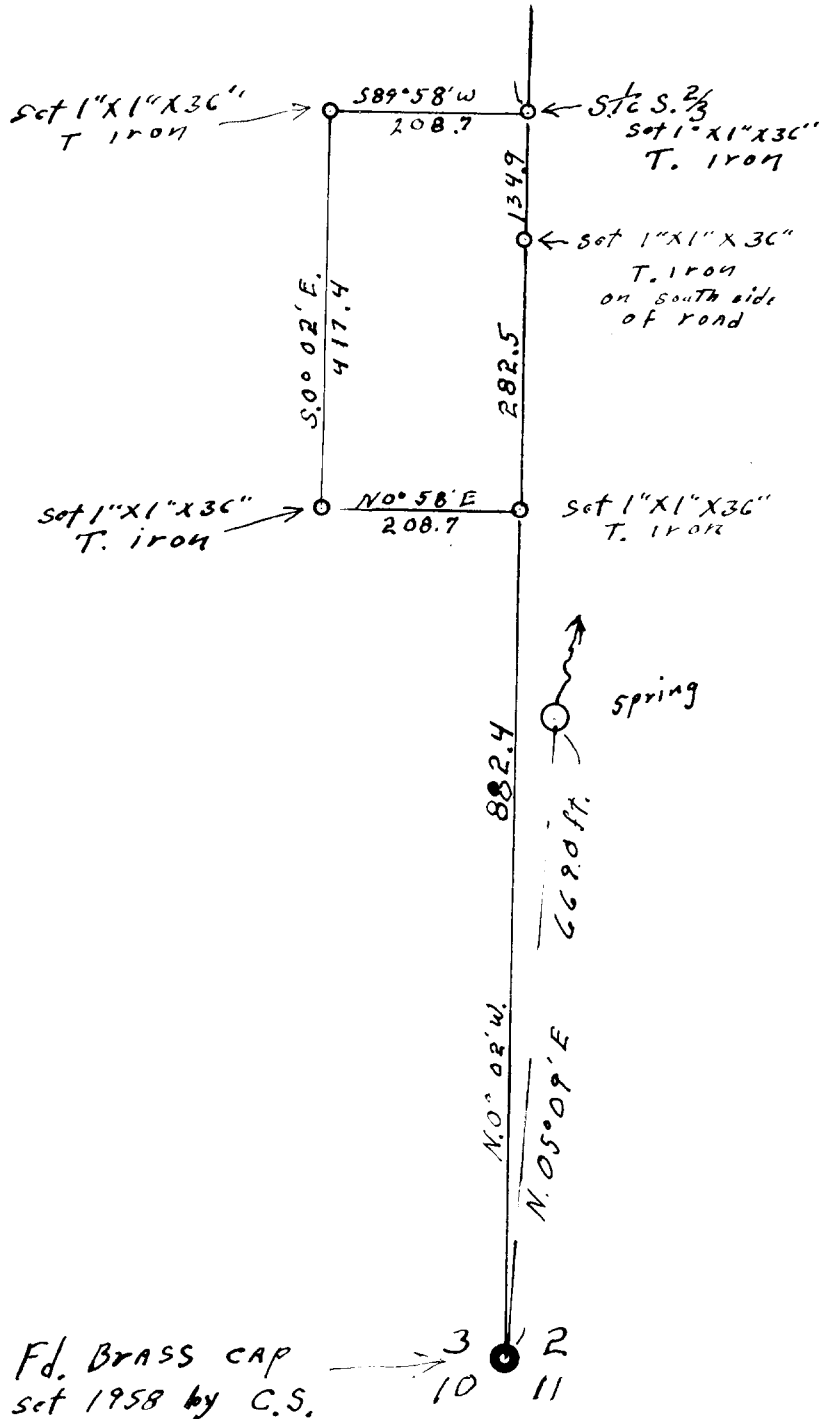
34 | 35
3 | 2

N. 0° 02' W. 3834.5 To G.A.

FILED *L.H.*
RECEIVED

NOV 20 1962

COUNTY SURVEYOR
DOUGLAS COUNTY, ORE.



C. S. File No. 51/2472