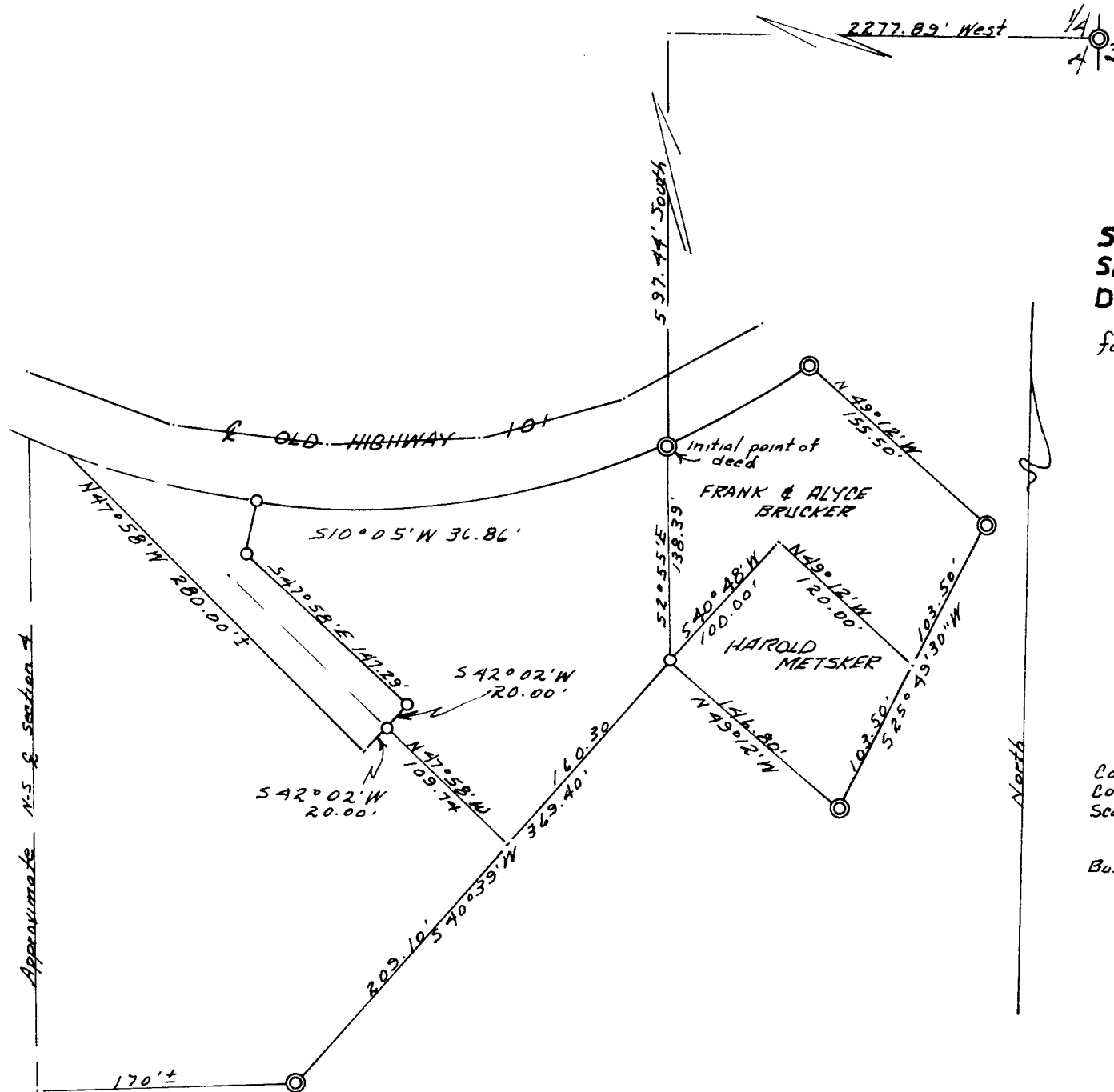


COUNTY SURVEYOR THE DATA
DO NOT REMOVE FROM OFFICE



SURVEY OF A PORTION OF THE NE¹/₄SE¹/₄,
SECTION 4, T. 22 S., R. 12 W., W.M.,
DOUGLAS COUNTY, OREGON

for: PAUL BERNHARDT

FILED *[initials]*
RECEIVED

FEB 25 1963

COUNTY SURVEYOR
DOUGLAS COUNTY, ORE.

Corners set: ○ 3/4" pipe
Corners found: ⊙ 3/4" pipe
Scale: 1" = 100'

February 5, 1963

Basis for bearing: $\&$ of Section 4

WARREN S. FOOTMAN
COUNTY SURVEYOR
DOUGLAS COUNTY, ORE.
303

Approximate N-S $\&$ Section 4

North

51/24340