

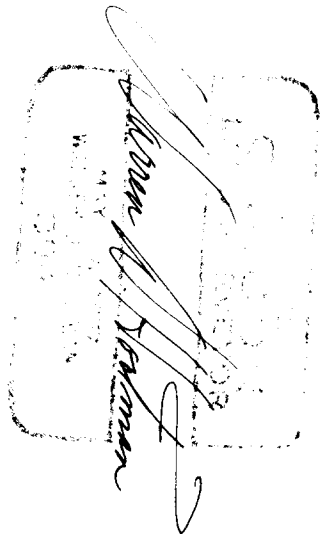
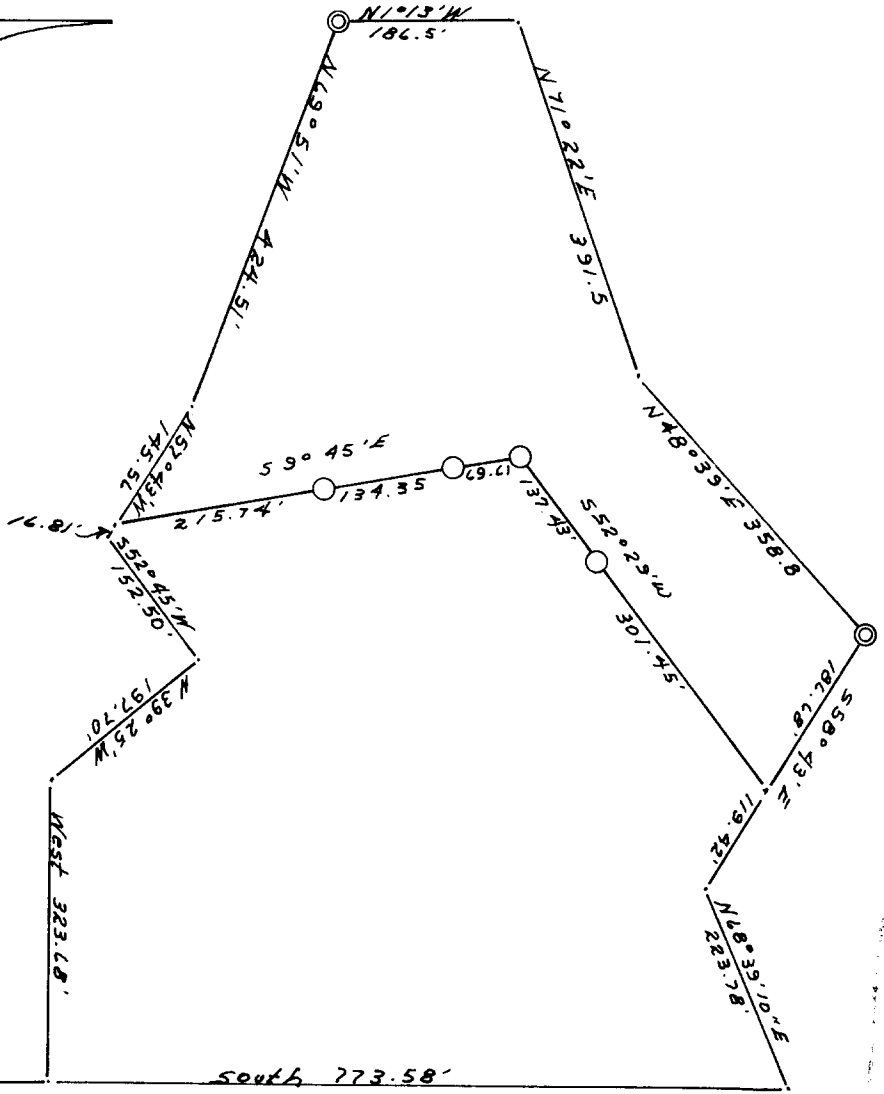
**COUNTY SURVEYORS FILE DATA
DO NOT REMOVE FROM FILE**

**DESCRIPTION OF A PIECE OF PROPERTY
LYING ADJACENT TO THE CENTER LINE
OF SECTION 3, T. 22 S., R. 11 W., W. M.,
DOUGLAS COUNTY, OREGON**

MARY ELLEN LEACH

for

December 15, 1962
Nail points found from Brayton Survey: ●
Apostrophe: 0 1/2"
Scale: 1" = 800'

North
Basis for bearing: Survey by Brayton, July 1962

FILED
RECEIVED

FEB 25 1963

COUNTY SURVEYOR
DOUGLAS COUNTY, ORE.

3
10
Acres

IN REPLY TO - SEE M 40-55 FOR CORRECT LOCATION