



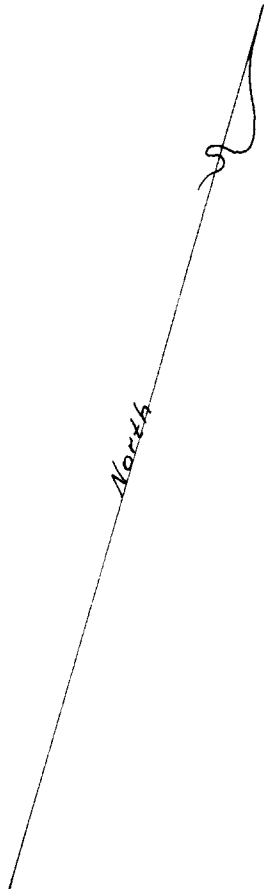
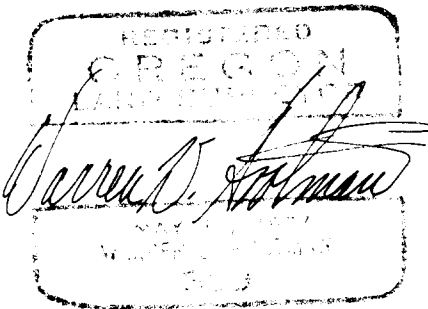
COUNTY SURVEYORS FILE DATA
DO NOT REMOVE FROM OFFICE

7. 36 - 1 12 11 11 11 11 11 3
SURVEY OF LOT 13, BLOCK 25, REEDSPORT ADDITION TO REEDSPORT,
DOUGLAS COUNTY, OREGON

For: RALPH PAULL

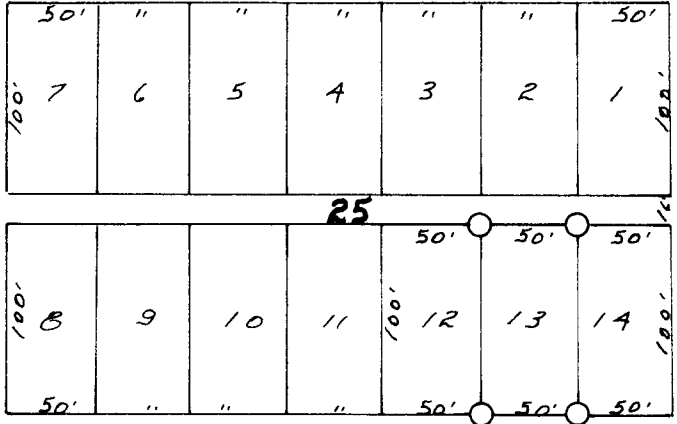
Scale: 1" = 100'
Corners found:  3/4" pipe
Corners set:  1" pipe

November 19, 1962



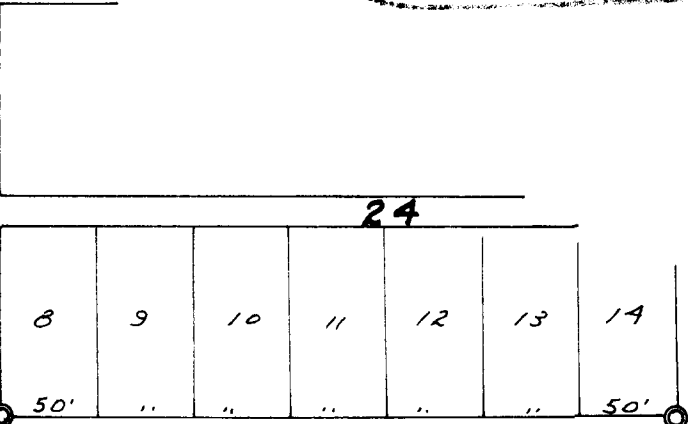
R 2ND STREET

WINCHESTER AVENUE



ELM AVENUE

R 1ST STREET



27

FILED RECEIVED

NOV 28 1962

COUNTY SURVEYOR
DOUGLAS COUNTY, ORE.