

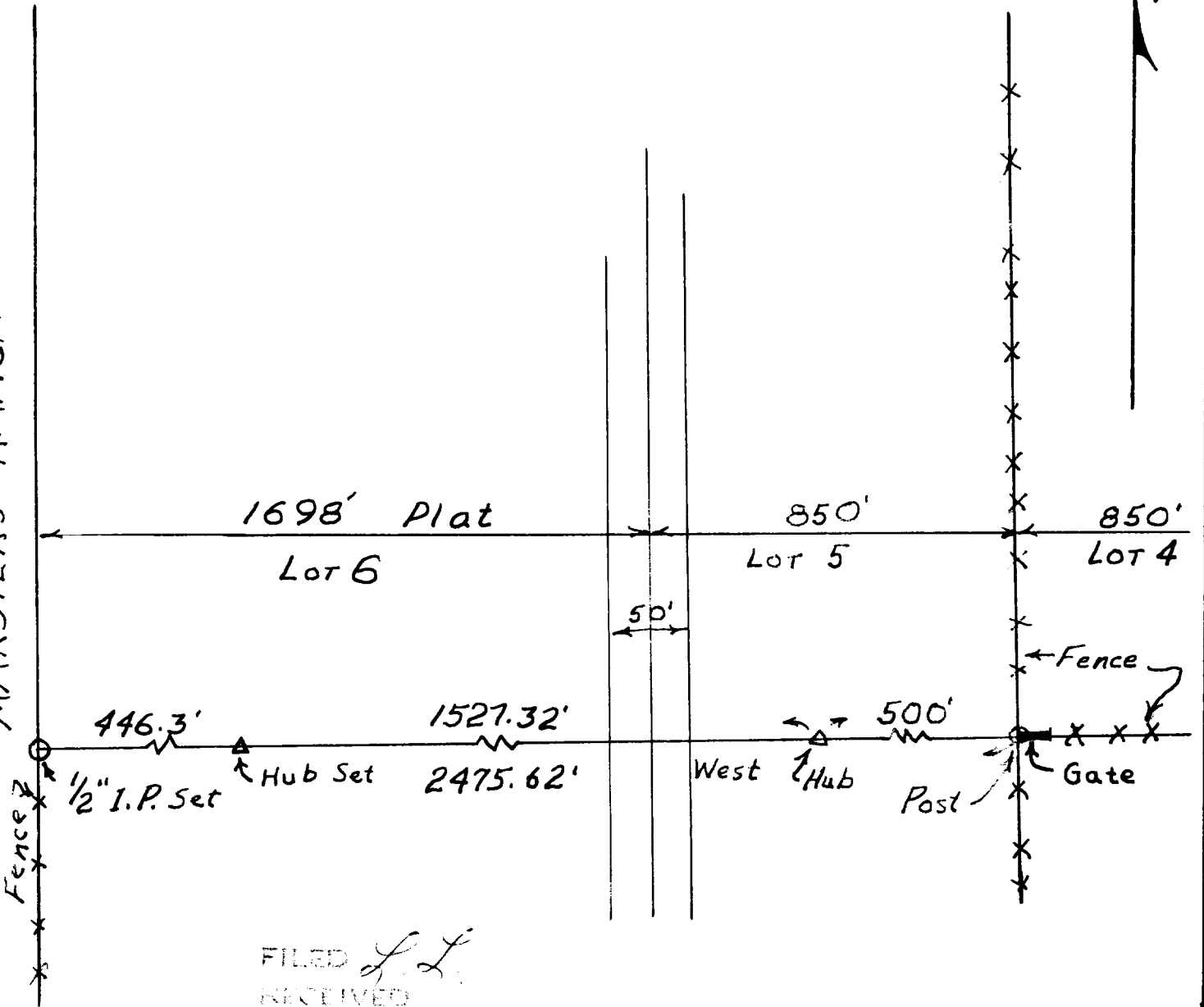
FLOYD GRECIAN SURVEY - SOUTH LINE LOTS 5 & 6 BLOCK "B"
 UMPQUA PARK FRUIT LANDS - DOUGLAS COUNTY - ORE

Floyd Grecian

DO NOT REMOVE FROM OFFICE



MARSTERS RANCH



FILED *L.L.*
 RECEIVED

COUNTY SURVEYOR
 DOUGLAS COUNTY, ORE.

James R. Daugherty

Scale 1"=100'
 Rev. Apr. 7, 1961
 Mar. 6, 1961